

# AREBOS

## Transmission Jack

AR-HE-GTHB05T



Please follow all security measures in this user's manual to ensure a secure use.



Thank you for trusting in AREBOS.

# Table of Contents

<b>1. Safety instructions</b> .....	<b>3</b>
1.1 Explanation of the symbols .....	3
1.2 General Information .....	3
<b>2. Technical specifications</b> .....	<b>3</b>
<b>3. Main construction</b> .....	<b>4</b>
<b>4. Assembly</b> .....	<b>5</b>
<b>5. Use</b> .....	<b>12</b>
5.1 Positioning the jack beneath the load .....	12
5.2 Lowering the load .....	12
5.3 Transporting the load .....	12
<b>6. Maintenance</b> .....	<b>12</b>
<b>7. Environmentally friendly disposal</b> .....	<b>13</b>
7.1 Disposal and packaging .....	13
7.2 Disposal of old equipment.....	13
<b>EU Declaration of Conformity</b> .....	<b>14</b>

Thank you for purchasing our product. Please read the operating instructions carefully before using the product for the first time. If you give the product to a third party, this manual must be handed over with it. Keep the instruction manual for future reference. The drawings in this manual may not match the physical objects. Please refer to the physical objects.

# 1. Safety instructions

## 1.1 Explanation of the symbols



By means of a CE marking, it can be recognized that a product complies with the legal provisions of European legal norms and therefore may be traded within the European Community.



**Warning!** Read the safety instructions carefully. Failure to follow the safety precautions could result in serious injury or damage. Keep the operating instructions in a safe place.



**Warning!** Wear protective gloves!



**Warning!** Danger of crushing hands!

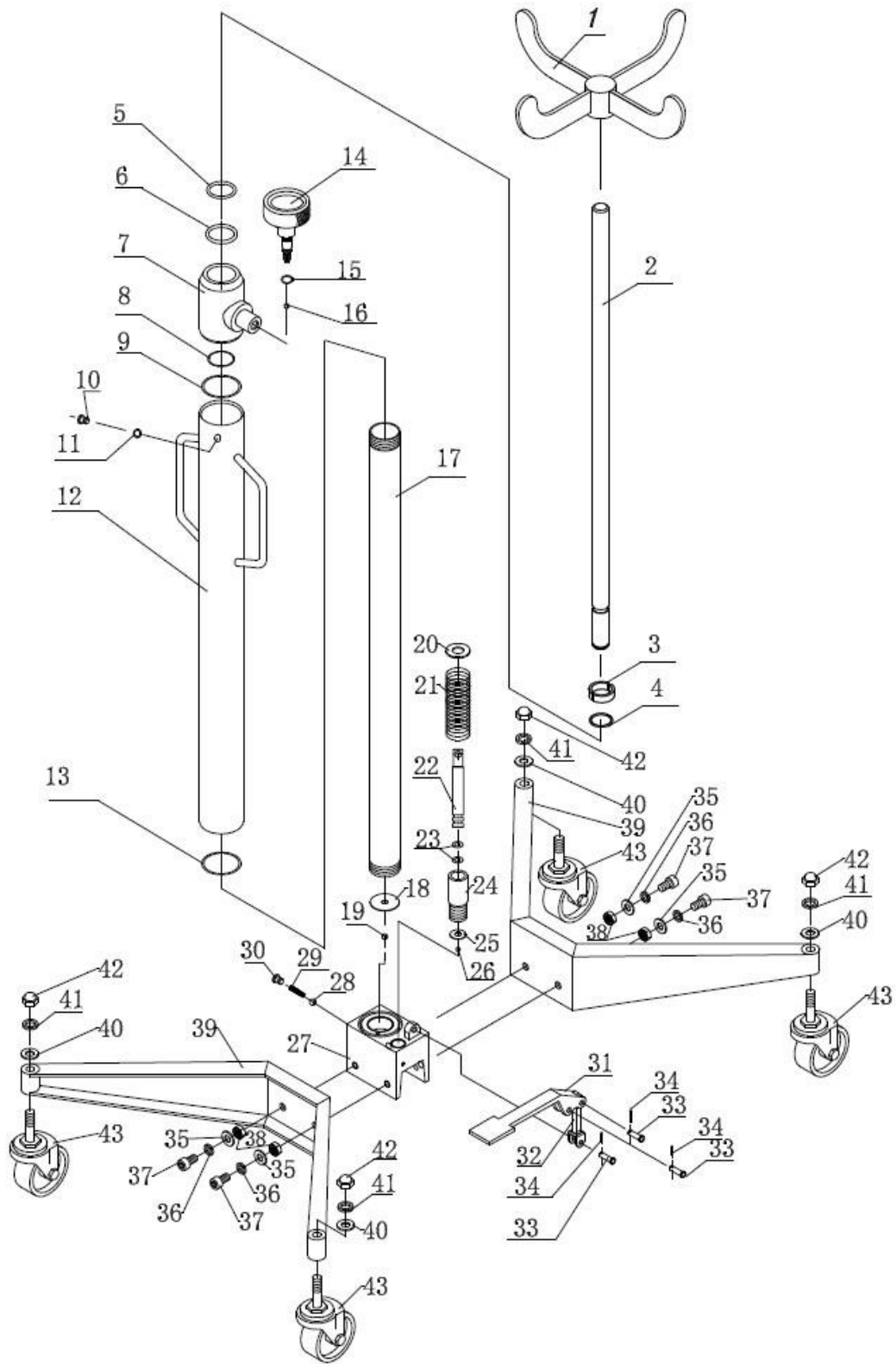
## 1.2 General Information

- **IMPORTANT:** Please read these instructions carefully. Note the safe operational requirements, warnings and cautions.
- This jack is a hydraulic one with the following advantages thanks to its compact construction: light in weight, long lift range, fast lifting, replaceable connection part, reliable ADT connection etc.
- It can be used when assembling and disassembling removable parts and the structural parts which need to be lifted, lowered and transported. It is the ideal tool for assembling and repairing in a motor repair shop or in a mobile shop.

# 2. Technical specifications

Model	AR-HE-GTHB05T
Rated load	1102 lbs (500 kg)
Min. height of saddle	44.1 in (112 cm)
Max. height of saddle	74 in (188 cm)
Dimensions	22 x 21.6 x 44.1 in (56 x 55 x 112 cm)
Net weight	50.7 lbs (23 kg)

### 3. Main construction



No.	Description	Qty	No.	Description	Qty
1	Fork	1	23	O-Ring $\varnothing$ 9.5x2.65	2
2	Piston rod	1	24	Pump body	1
3	Piston ring	1	25	Pump washer $\varnothing$ 18x9x1.2	1
4	Steel wire retainer ring $\varnothing$ 28x2	1	26	Steel ball $\varnothing$ 6	1
5	O-Ring $\varnothing$ 28x3.55	1	27	Base	1
6	O-Ring $\varnothing$ 28x3.55	1	28	Steel ball $\varnothing$ 6	1
7	Top cap	1	29	Pagoda spring	1
8	O-Ring $\varnothing$ 33.5x3.55	1	30	Oil seal screw M10x1	1
9	Rectangle ring	1	31	Foot pedal	1
10	Oil seal screw M10x1	1	32	Connect rod	1
11	O-Ring $\varnothing$ 8.5x2.65	1	33	Pin $\varnothing$ 8x27	3
12	Coat	1	34	Cotter pin	3
13	Rectangle ring $\varnothing$ 61x55x1.5	1	35	Flat washer $\varnothing$ 10	4
14	Release valve lever	1	36	Spring washer $\varnothing$ 10	4
15	O-Ring $\varnothing$ 7.8x1.9	1	37	Hex head screw M10x30	4
16	Steel ball $\varnothing$ 6	1	38	Nut M10	4
17	Cylinder	1	39	Leg	2
18	Cylinder washer	1	40	Flat washer $\varnothing$ 12	4
19	Steel ball $\varnothing$ 6	1	41	Spring washer $\varnothing$ 12	4
20	Spring cover	1	42	Round nut M12	4
21	Spring	1	43	Caster wheel $\varnothing$ 90	4
22	Pump core	1			

## 4. Assembly

- Check the delivered parts before assemble the unit. The transmission jack must not be damaged in transit and the delivery must be complete.
- First, start assembling the foot pedal.
- First, mount the unit for the foot pedal, which will later be connected to the hydraulic unit.



- When tightening, make sure you have enough clearance for the pumping function.



- Slip the spiral over the core pump and place the attached disc on it.







- Then tighten the foot pedal to the core pump.





- Prepare all necessary utensils such as nuts and washers for mounting the base.





- Fix the base with the foot and tighten the screw connection on both sides.



- Before attaching the wheels, ensure the vertical position of the shaft to ensure that the transmission jack is secure and that all wheels are touching the level ground securely. Then tighten the screws.



- Place the turnstile on the piston rod, loosen the sealing screw to bleed it and lift up the transmission jack without load. Pressing the foot pedal while the screw is tightened will damage the hydraulic pump.



- To release the lift, use the hand crank. When using the transmission jack, always observe the specified carrying capacity.



## 5. Use

- **WARNING!** Before use, ensure you have read, understood and applied all safety instructions.
- **WARNING!** Ensure you prepare the vehicle correctly before attempting to use the transmission jack.

### 5.1 Positioning the jack beneath the load

- Before use, ensure the transmission weight and size does not exceed the capacity of the jack.

### 5.2 Lowering the load

- **WARNING!** Ensure the load lays central and stable on the jack saddle and load is fixed in place before attempting to lift, lower or transport.
- Slowly turn the release valve knob anti-clockwise to gently lower saddle to the lowest minimum height before attempting to transport load.
- **IMPORTANT:** The unit is fitted with a dead man release valve. The quicker the valve knob is turned, the more rapid the jack's descent.
- Ensure the jack's descent is slow and controlled to avoid the risk of sudden dropping which could be dangerous. The valve will automatically return to the closed position when the knob is released.

### 5.3 Transporting the load

- **WARNING:** Ensure you have read, understood and applied the safety instructions!

## 6. Maintenance

- **IMPORTANT:** Only fully qualified personnel should attempt maintenance and repair.
  1. When the jack is not in use, the saddle must be in the lowest position.
  2. Keep the jack clean and wipe off any oil or grease. Lubricate all moving parts with acid free oil.
  3. The oil cylinder is a sealed unit and must not be accessed. For service contact your authorized dealer.
- **WARNING:** Only Jack oil of good quality must be used, DO NOT use brake fluid.
  4. Before each use, follow the pre-check list to ensure all components are in good working order. DO NOT use the jack if you believe it has been subjected to an abnormal load or shock.
  5. Periodically check the pump piston and piston rod for signs of corrosion. Clean exposed areas with a clean oil.

## 7. Environmentally friendly disposal

**Warning Danger of suffocation!** Packaging material is dangerous for children. Never let children play with packaging material.

### 7.1 Disposal and packaging

- The packaging of your unit consists of materials that are necessary to guarantee effective protection during transport. These materials are fully recyclable and therefore reduce the environmental impact. Dispose of the packaging in a bin for recyclable materials.

### 7.2 Disposal of old equipment

- Old appliances must be disposed of in accordance with the guidelines and regulations of the local waste disposal authority. Check with your local administration for the address of the nearest recycling centre and deliver your appliance there.



The symbol of the crossed-out dustbin on a Waste electrical or electronic equipment indicates that it must not be disposed of with household waste at the end of its life. Collection points for waste electrical and electronic equipment are available free of charge in your area. You can obtain the addresses from your city or local government. You can find out about other return options created by us on our website [www.arebos.de](http://www.arebos.de).

The separate collection of Waste electrical or electronic equipment is intended to enable the reuse, recycling or other forms of recovery of Waste electrical or electronic equipment and to avoid the negative consequences of disposal on the environment and human health.

**Our customer service number: Tel. +44 (0) 208 068 5604**

**Fax: +49 (0) 931 4523 2799 / E-Mail: [info@arebos.de](mailto:info@arebos.de)**

Office address: Canbolat Vertriebs GmbH • Gneisenaustraße 10-11 • 97074 Würzburg

**Return address** can be found in the imprint: <https://www.arebos.de/impressum/>

## EU Declaration of Conformity

We, the

Canbolat Vertriebs GmbH, Gneisenaustraße 10-11, 97074 Würzburg, Germany,

hereby declare that the equipment described below, by virtue of its design and construction and in the versions placed on the market by us, complies with the relevant essential health and safety requirements of the EU directives.

Product name: AREBOS Transmission jack

Model number: AR-HE-GTHB05T

Article number: 4260551586675

Should the appliance be modified without our consent, this declaration of conformity will lose its validity.

EU Standard:

EN 1494:2000+A1:2008

Date/Signature Manufacturer/Place:

Würzburg, May 6, 2022



Signature:

Dipl.-Inform. (Univ.) Korhan Canbolat, Managing Director

Representative of these instructions for use/technical data:

Dipl.-Inform. (Univ.) Korhan Canbolat, Managing Director

Office address:

Canbolat Vertriebs GmbH

Gneisenaustraße 10-11

D-97074 Würzburg

Return address can be found in the imprint: <https://www.arebos.de/impressum/>

VAT identification number: DE 263752326

Court of the Commercial Register is Würzburg, HRB 10082

WEEE Reg.-No. DE 61617071