

Original user manual
Gymnastics mat Airtrack



Please follow all the safety measures in this user manual to ensure safe use.



Table of contents

1 Introduction and
Safety

4 Environmentally friendly disposal

2 Instruction manual

5 EU Declaration of Conformity

3 Specifications



Thank you very much!

Thank you for choosing our product. Please read the user manual carefully before using the product for the first time. If you are passing the product on to a third party, you must hand over these instructions. Keep the owner's manual for future reference. The drawings in this guide may not match the physical objects. Please refer to the physical objects.



Important safety instructions

Your safety is of the utmost importance to us. Please read these instructions before operating and using the device. If you are unsure about the information contained in this brochure, please contact the retailer where you purchased your device.

WARNING: Read all safety and use instructions. Failure to follow the safety instructions and instructions may result in electric shock, fire and/or serious injury. Keep all safety and usage instructions for future reference.

CAUTION: DO NOT use the product before using the Instruction manual.

Make sure you have read the instructions for use thoroughly and understand the contents before starting the installation.

The instructions are in the interest of your safety.

Warning: There is a risk of choking! The packaging material is dangerous for children. Never let children play with packaging materials.



1

Safety

Introduction


This user guide is intended to familiarize you with the installation, use, and maintenance of the product. To install the device safely and correctly, please read the user manual before you begin.

Please read the following instructions carefully and use the product accordingly. Please keep these instructions and hand them over when you pass on the product.

This summary cannot contain all the details of all variants and steps to follow. Please contact us if you need more information and assistance.

Symbol explanation

 **WARNING:** This signal symbol/word indicates a medium-risk hazard that, if not can result in death or serious injury.

 **CAUTION!** This signal word refers to a hazard with a low level of risk which, if not avoided, can result in a minor or moderate injury.

Attention! This signal sign/word warns of possible property damage.

Original user manual Gymnastics mat Airtrack



Attention! Read the safety instructions carefully. Failure to follow the safety instructions may result in electric shock, fire and serious injury. **Keep all safety instructions and instructions for the future.**



This product must not be disposed of with household waste!



WARNING! From this device you can if it is used improperly or not in accordance with its intended purpose by persons who have not been instructed! Note that the device is not a toy and does not belong in the hands of children.

Suffocation! Let the the packaging material not lie carelessly. It could become a dangerous toy for children.



A CE marking indicates that a product complies with the legal provisions of European legal standards and may therefore be traded within the European Community.

1

Safety

General information

Thank you for purchasing one of our safe and fun products! With this guide, we want to describe how to use Airtracks. Please read the instructions carefully before using your Airtrack. If something is unclear, don't hesitate to contact our customer support! We hope you enjoy your new equipment.

- Always store the Airtrack in its carrying bag and transport it. Do not use the Airtrack if it is damaged or if there is air leakage.
- Select an appropriate area to set up the Airtrack. Make sure there is nothing sharp underneath the Airtrack (e.g., rocks, gravel, etc.) when setting it up to avoid damaging the Airtrack. If you are using the Airtrack outside, place it on flat and soft ground, preferably on a protective tarp or fabric.
- To clean the Airtrack surface, wipe it down with lukewarm soapy water. Avoid strong cleaning solutions. Before rolling up the Airtrack for storage, make sure the Airtrack is clean and dry.
- The recommended temperature for Airtrack uses IS-10-+30C/14F-86F and for storage, it is at least +5C/41F (not recommended to be stored in direct sunlight).

Safety

- Your safety is the most important thing to us. Therefore, please be sure to read the user manual before installing and using the product. If you are unsure about any of the information in this guide, please contact the retailer where you purchased the device.
- DO NOT **use the product** if you have not already read the user manual.
- Make sure you have read the instructions for use thoroughly and understand the contents before you start installing begin.
- The instructions are in the interest of your safety.

1

Safety

General information

- USE YOUR AIRTRACK ONLY FOR ITS INTENDED PURPOSE.
- Never walk on your Airtrack with shoes on, as they can damage the surface.
- Never place your Airtrack under objects such as trees or power lines.
- Keep any sharp or pointed objects away from your Airtrack.
- Never jump or land closer than 20 cm from the valve.
- Make sure your Airtrack is inflated with enough pressure to prevent injury.
- The area where your Airtrack is set up must be clean, dry, level, and free of objects.
- Always set up your Airtrack where you want to use it. If you change the setup location, don't drag your Airtrack across the floor, but carry it by the handles.
- Do not use your Airtrack in the rain, the surface will be slippery and there is a risk of injury.
- Never pack, store or transport your Airtrack when it is wet.
- Your Airtrack can be cleaned with water and a mild detergent. Do not use industrial cleaning products.
- Never use a damaged Airtrack.
- Do not leave your Airtrack in the blazing sun or in a hot environment, as this will cause cracks and pressurization.

2

Operating instructions

Inflating/Lowering User Instructions

Inflating the Airtrack: Remove the Airtrack from the carry bag and roll it out completely so that the valves are visible.



Open the valve cover (1). Make sure the valve knob is in the up position (2). Insert the head of the pump tube into the valve and turn it to the right so that the pump and valve are firmly connected (3).

The recommended pressure for Airtrack is 3-4 PSI. The bounce of the Airtracks depends on a lot of pressure you put into it. Our recommended pressure level is 3-4 PSI, but the optimal pressure depends on user preferences.

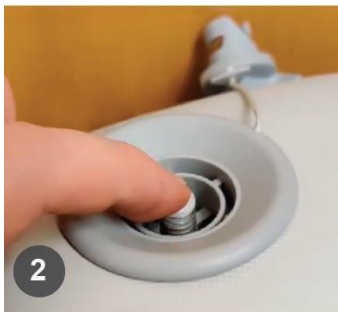
When inflating to appropriate pressure, remove the head of the pump tube by turning to the left. Replace the valve cover. Make sure that the valve cover is properly attached to prevent any air leakage from the Airtrack.

2

Operating instructions

Inflating/Lowering User Instructions

Deflating the Airtrack: Press the valve button to the down position and the valve will open (2).



If air leaks around the valve, follow these steps:

1. Remove the valve wrench from the packaging case.
2. Open the valve cover and place the valve with the valve.
3. Turn the flap wrench clockwise until there is no more space between the valve and the Airtrack. Do not turn the key counterclockwise, as this will cause the valve to come loose, air to escape, and eventually detach from the Airtrack.
4. Close the vent and check if the leak has stopped.



3

Specifications

Model	AR-HE-AF*
Variation	4
Measurement	300/400/500/600x 100x 10 cm
weight	10,8/13,2/15,6/18 kg

In the course of product improvements, we reserve the right to use technical and visual changes to the article.

Environmentally friendly disposal

⚠ Warning: There is a risk of choking! The packaging material is dangerous for children. Never let children play with packaging materials.

1. Disposal and packaging

The packaging of your device is made of materials necessary to ensure effective protection during transport. These materials are fully recyclable and thus reduce the environmental impact. Dispose of the packaging in a recycling bin.

2. Disposal of old equipment

WEEE must be disposed of in accordance with the guidelines and the regulations of local waste disposal. Contact your local administration about the address of the nearest recycling center and deliver your device there.



4

EU Declaration of Conformity



We

KM-Fit by Canbolat Vertriebsgesellschaft mbH, Gneisenaustraße 10-11, 97074 Würzburg, Germany,

We hereby declare that the device described below complies with the relevant essential safety and health requirements of the EU Directives due to its design and construction as well as in the version placed on the market by us.

Product Name: **Gymnastics mat**

Model Number: **Airtrack AR-HE-**

Item No: **AF***

4AR-HE-AF3MG – 4252023108850 / AR-HE-AF3MP – 4252023108867 / AR-HE-AF3MR – 4252023108874 / AR-HE-AFEB - 4252023107907 / AR-HE-AF4MB – 4252023108881 / AR-HE-AF4MG – 4252023108898 – 4252023108904 / AR-HE-AF4MR – 4252023108911 / AR-HE-AF5MB – 4252023108928 / AR-HE-AF5MG – 4252023108935 / AR-HE-AF5MP – 4252023108942 / AR-HE-AF5MR – 4252023108959 / AR-HE-AF6MB – 4252023108966 / AR-HE-AF6MG – 4252023108973 / AR-HE-AF6MP – 4252023108980 / AR-HE-AF6MR – 4252023108997

The test is carried out on the basis of the following harmonised standards : EN

15649-1:2009+A2:2013

Place and date: Würzburg, 14.09.2022

Signature:

A handwritten signature in black ink, appearing to read 'K. Canbolat', is written over a light blue grid background.

Dipl.-Inform. (Univ.)

Korhan Canbolat, Managing Director

If the device is modified without our consent, this declaration of conformity loses its validity.

Contact us

Phone: +49 (0) 931 90 80 3000

Mail: info@km-fit.de

Headquarters: KM-Fit • Gneisenaustraße 10-11 • 97074
Würzburg

**The return address can be found in the imprint : [https://
www.km-fit.de](https://www.km-fit.de)**

Sales tax identification number: DE 263752326

The court of registration in the commercial register is Würzburg,

HRB 10082 WEEE-Reg. Nr. DE 61617071



km-fit.de