

AREBOS

Hydraulic Trolley Jack 2 T

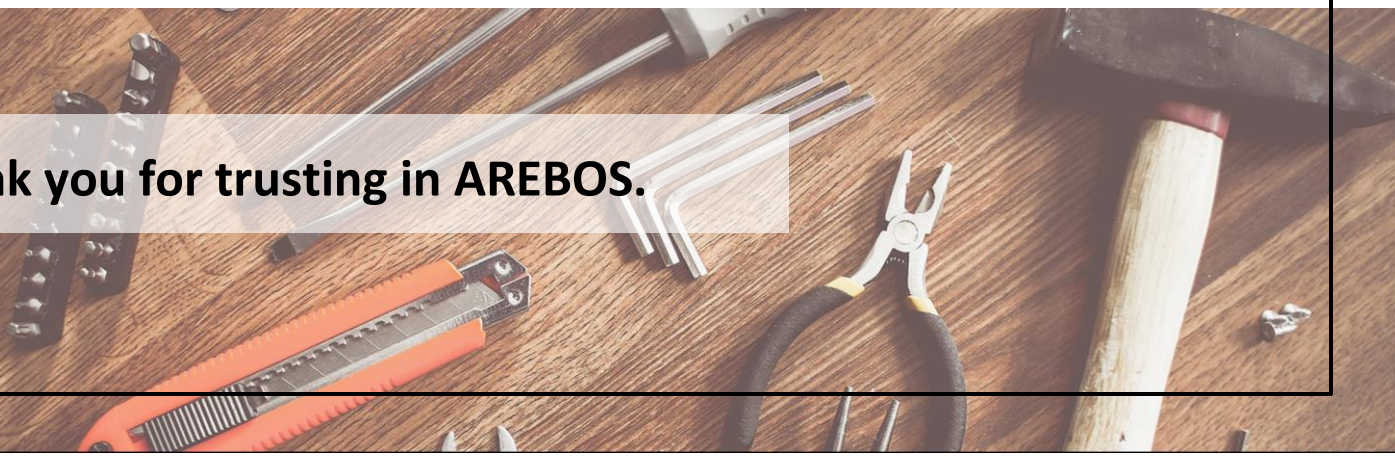
AR-HE-HRW2T



Please follow all security measures in this user's manual to ensure a secure use.



Thank you for trusting in AREBOS.



List of contents

1. Safety instructions	3
1.1 Explanation of the symbols	3
1.2 General safety instructions	4
2. Set Up	6
2.1 Overview of product.....	6
2.2 Control before use.....	6
2.3 Attaching the Handle.....	6
3. Operation	7
3.1 Bleeding.....	7
3.2 Adding Hydraulic Fluid.....	8
3.3 Lifting and Lowering	8
3.3.2 Lifting.....	8
3.3.3 Lowering	9
4. Explosion view	10
5. Maintenance of the jack.....	12
6. Troubleshooting.....	13
7. Specifications	14
8. Environmentally friendly disposal.....	14
8.1 Disposal and packaging	14
8.2 Disposal of old equipment.....	14
EC Declaration of Conformity	15

Thank you for purchasing our product. Please read the operating instructions carefully before using the product for the first time. If you give the product to a third party, this manual must be handed over with it. Keep the instruction manual for future reference. The drawings in this manual may not match the physical objects. Please refer to the physical objects.

1. Safety instructions

1.1 Explanation of the symbols



By means of a CE marking, it can be recognized that a product complies with the legal provisions of European legal standards and therefore may be traded within the European Community.



Warning! Read the safety instructions carefully. Failure to follow the safety precautions could result in serious injury or damage. Keep the operating instructions in a safe place.



Be careful when using this product.



Warning! Danger of crushing the hands.



This product has been tested and certified by TÜV Rheinland. The symbol "GS" stands for tested safety. Products marked with this symbol comply with the requirements of the German Product Safety Act (ProdSG).

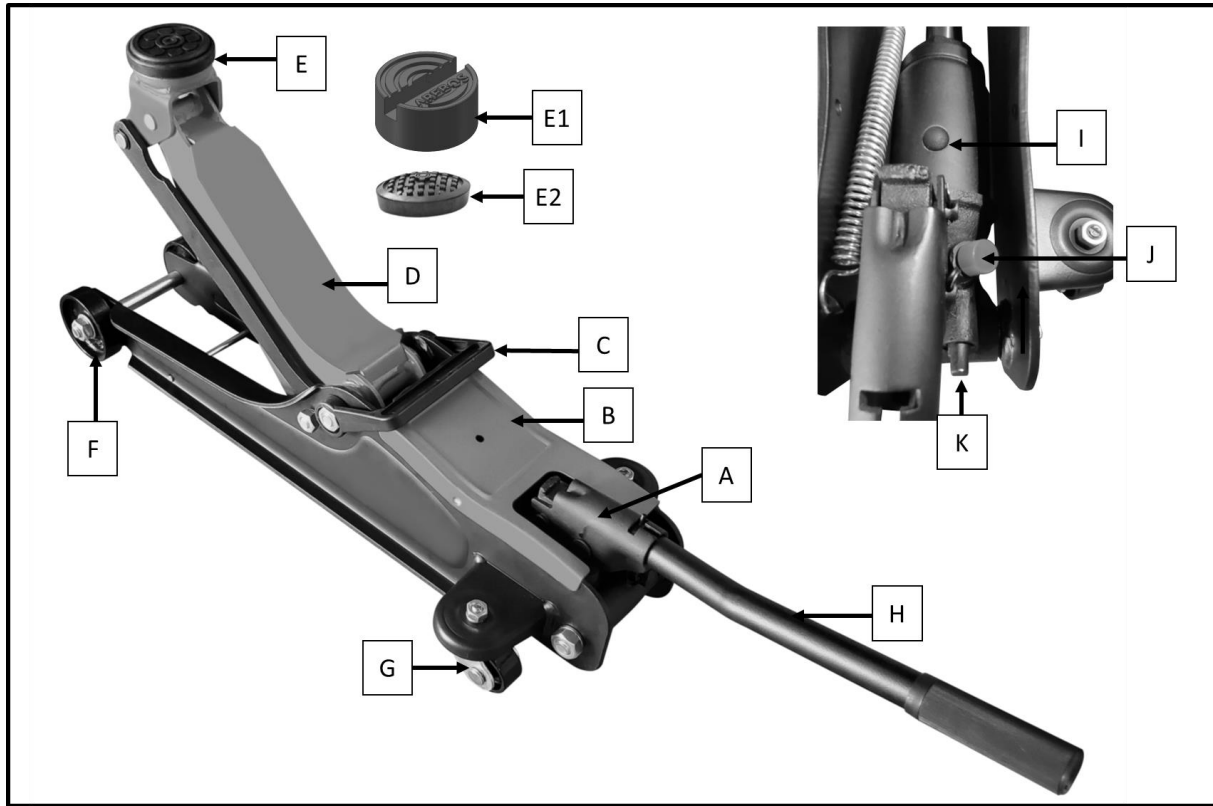
1.2 General safety instructions

- This jack is designed for lifting objects only and shall be supported by an adequate aid, such as a stand.
- **WARNING!** Please note that the handle socket of this jack is retained under tension and must be released before use. Caution should be taken when releasing, as the handle socket will suddenly raise to its upright position if not controlled.
- Make sure that the lifted object is firmly fixed to the jack.
- DO NOT use the jack while persons are in or leaning against the vehicle.
- DO NOT exceed the permissible load.
- DO NOT use any extensions other than those attached to the jack.
- Wear safety goggles and heavy-duty work gloves during use.
- Use the jack only on a firm surface that can support the load.
- Make sure that the jack is central and stable with its support saddle under the object and the lifting point.
- Ensure that the safety instructions and labels are always clearly visible and not soiled.
- Read the supplied instructions carefully before use.
- Failure to follow these instructions can lead to damage to the lift and/or the vehicle and/or a person.
- This manual should be kept in a safe place so that it can be used and/or maintained at a later date.
- This jack is filled with high-quality hydraulic oil. Use suitable hydraulic oil at extremely low temperatures. Use only high-quality oil. Avoid mixing different oils. DO NOT use brake fluid, alcohol, cleaning agents, turbine oil, gear oil, engine oil, glycerin, or contaminated oils. These can cause damage to the jack or impair its function.
- DO NOT adjust the adjusting screws on the hydraulic unit.
- The user shall work only in accordance with this instruction manual.
- The operator shall be provided with all necessary information about training and about pumping and translating forces.
- Ensure the jack is in sound condition and good working order. Take action for immediate repair or replacement of damaged parts. Use genuine parts only. DO NOT modify the jack. The use of non-genuine parts may be dangerous and will invalidate the warranty.
- Locate the jack in a suitable, well-lit working area.
- Keep working area clean and tidy and free from unrelated materials. Use jack on level and solid ground, preferably concrete. Avoid tarmac as jack may sink in.
- Chock wheels of the vehicle.
- Ensure the vehicle handbrake is engaged, the engine is switched off and the transmission is in gear (or "PARK" if automatic).
- Ensure a minimum distance of 0.5m between the vehicle and static objects such as doors, walls, etc. to allow for vehicle tilting.
- Ensure all non-essential persons keep a safe distance whilst the jack is in use.
- Ensure there are no passengers in the vehicle.
- It is necessary that the operator can watch the lifting device and the load during all movements.
- Place jack under only those lifting points recommended by the vehicle manufacturer (see vehicle handbook).
- Check that the lifting point is stable and centered on the jack saddle.
- Ensure the jack wheels are free to move and that there are no obstructions.

- DANGER: Use the jack for lifting only, NOT for supporting the lifted load.
- Ensure there are no persons or obstructions beneath the vehicle before lowering.
- It is not allowed to work under the raised load until it is secured by suitable means. Use suitable axle stands under the vehicle before proceeding with any task.
- Use a qualified person to lubricate and maintain the jack.
- Ensure that only hydraulic jack oil is used in the jack.
- DO NOT operate the jack if damaged.
- DO NOT allow untrained persons to operate the jack.
- DO NOT operate the jack when tired or under the influence of drugs, alcohol, or intoxicating medication.
- DO NOT allow the vehicle to move during lifting or lowering, or use the jack to move the vehicle.
- DO NOT jack the vehicle if there is a risk of spillage of fuel, battery acid, or other dangerous substances.
- DO NOT work under the vehicle until appropriately rated axle stands have been correctly positioned.
- DO NOT use the jack for purposes other than that for which it is intended.
- DO NOT adjust the safety overload valve.
- Lifting of persons is prohibited.
- DO NOT use in severe weather conditions, risk assess the task.
- When not in use, store the jack, fully lowered, in a safe, dry, childproof area.
- If more than 400N of effort is generated in lifting, the efforts shall be lowered by an additional person.
- Jacks shall be maintained and repaired in accordance with the manufacturer's instructions. Such maintenance and repair shall be carried out by qualified persons.
- No modifications shall be carried out which adversely affect the compliance of the jack with the standard.
- Check the state of the markings and that the markings remain as the initial one.
- Give the jack: Manufacturing to a high standard, this product will, if used according to these instructions, and properly maintained, give you years of trouble-free performance.
- The hydraulic jack must not be operated in potentially explosive atmospheres or severe conditions, e.g., extreme climates, freezer applications, and strong magnetic fields.
- Be careful when handling loads that could lead to dangerous situations, e.g., molten metal, acids, radiating materials, especially brittle loads.
- There may be residual risks unspecified in the label; always wear PPE during operation.
- The product is not allowed to operate on sea ships.
- DO NOT use for aircraft purposes.
- The jack is designed to work at a rated load in a temperature range of -20°C to +50°C.
- No modifications shall be carried out which adversely affect the compliance of the jack with standard EN 1494 or the essential requirements of the Machinery Directive 2006/42/EC.
- IMPORTANT! Before first use: Check the hydraulic fluid level and fill to 1/4 " below the fill port as needed. Thoroughly test the jack for proper operation. If it does not work properly, bleed air from its hydraulic system.

2. Set Up

2.1 Overview of product



- A. Handle Socket
- B. Cover Plate
- C. Carry handle
- D. Lifting arm
- E. Saddle
- E1. Rubber pad
- E2. Rubber pad

- F. Front wheel
- G. Rear wheel
- H. Handle
- I. Oil filler plug
- J. Safety overload valve
- K. release valve

2.2 Control before use

- The jack must be inspected for any oil leaks and/or loose, damaged or missing parts before each use.
- The owner/user must always ensure that repairs can only be carried out by a suitable specialist or authorized dealer.

2.3 Attaching the Handle

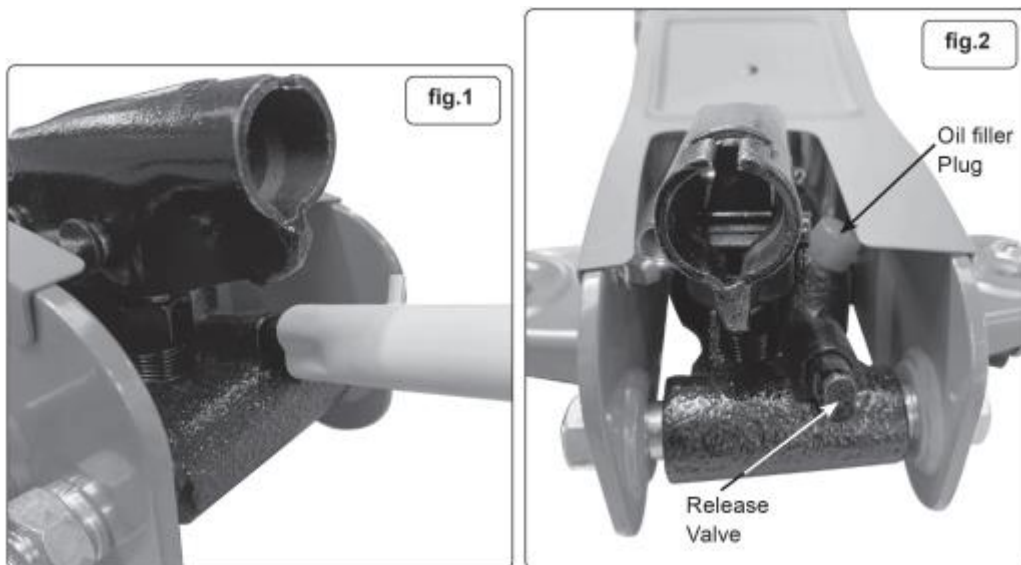
- First, use the handle rod(H) to tighten the release valve (K) clockwise.
- Then, insert the handle rod(H) into the handle socket(A) and rotate it to the right until the pin on the handle rod fits into the slot on the handle socket.
- Begin to operate the jack to lift it.

BEFORE FIRST USE

Before using the jack, purge the hydraulic unit to eliminate any air in the system.

Follow these steps:

- Place the handle onto the release valve nut as shown in fig.1 and open the valve by turning the handle anti-clockwise.
- Place the handle back into the jacking socket and pump for 20 repetitions.
- When complete, close the release valve by turning the valve nut clockwise.
- Place a few drops of hydraulic jack oil onto the pump piston and pump the handle several times to distribute the oil.
- Thoroughly lubricate all moving parts.



3. Operation

3.1 Bleeding

BEFORE EACH USE OR IF JACK PERFORMANCE DECREASES,

check for excessive air and proper hydraulic fluid level in Jack. If Jack appears not to be working properly, it may be necessary to purge its hydraulic system of excessive air as follows:

- 1) Remove the Cover plate (B)
- 2) Remove the oil Filler Plug (I)
- 3) Twist the Handle counterclockwise to open the Valve.
- 4) Check fluid level and, if necessary, top off according to **chapter 3.2 below**.
- 5) Turn the Handle clockwise to close the valve, then pump the Handle quickly several times.
- 6) Refit Fill Plug.

IMPORTANT!

After bleeding the Jack, test the Jack for proper operation prior to its actual use.

- 7) If the Jack does not appear to be working properly after bleeding, do not use it until repaired by a qualified service technician.

3.2 Adding Hydraulic Fluid

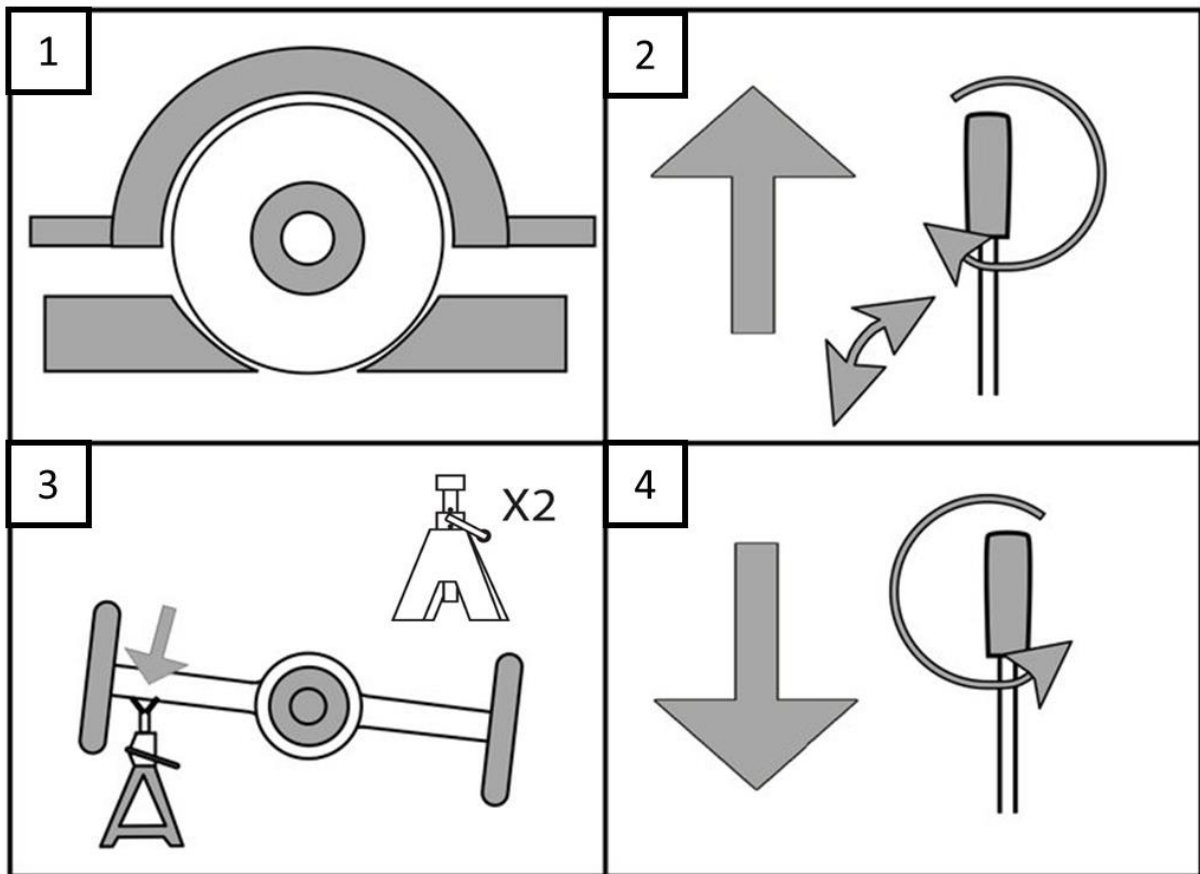
- 1) To check the oil level, fully lower the jack and remove cover plate (B).
- 2) Remove filler plug (I).
- 3) Add good quality jack oil slowly until the fluid reaches 1/4 below the top of the Fill Port, if necessary.
- 4) Replace the oil fill plug and cover plate.

Note

**Use hydraulic jack oil only.
Do not touch the Handle when adding hydraulic fluid.**

3.3 Lifting and Lowering

- **WARNING!** Before lifting, ensure Section 1 General safety instructions are read and understood.



3.3.2 Lifting

- 1) Park vehicle on a flat, level, solid, surface safely away from oncoming traffic. Turn off the vehicle's engine. Place the vehicle's transmission in "PARK" (if automatic) or in its lowest gear (if manual). Set the vehicle's emergency brake. Then chock the wheels that are not being lifted (Fig.1).
- 2) Slowly twist the Handle counterclockwise to lower the Jack. Once the Jack is fully lowered, twist the Handle firmly clockwise.
- 3) Carefully position the Jack's Saddle under the vehicle manufacturer's recommended lifting point. (See vehicle manufacturer's owner's manual for location of frame lifting point.)
- 4) Pump the Handle until the top of the Saddle (E) has nearly reached the vehicle's lifting point. Position the Saddle directly under the vehicle's lifting point.
- 5) To lift the vehicle, pump the Handle. Use smooth, full strokes (Fig.2).
- 6) Select matching jack stands of appropriate capacity. Set the jack stands to the same height according to the manufacturer's instructions, making sure they lock securely into position.
- 7) Position the jack stands' saddles under the vehicle manufacturer's recommended support points (Fig.3).

IMPORTANT!

Ensure that the vehicle support points are fully seated in the saddles of both jack stands. Use a matched pair of jack stands per vehicle to support one end only.

- 8) Slowly twist the Handle counterclockwise to lower the vehicle onto the jack stands' saddles (Fig.4).
- 9) Once the vehicle is fully seated on the jack stands, continue slowly lowering the Jack until it is completely lowered.

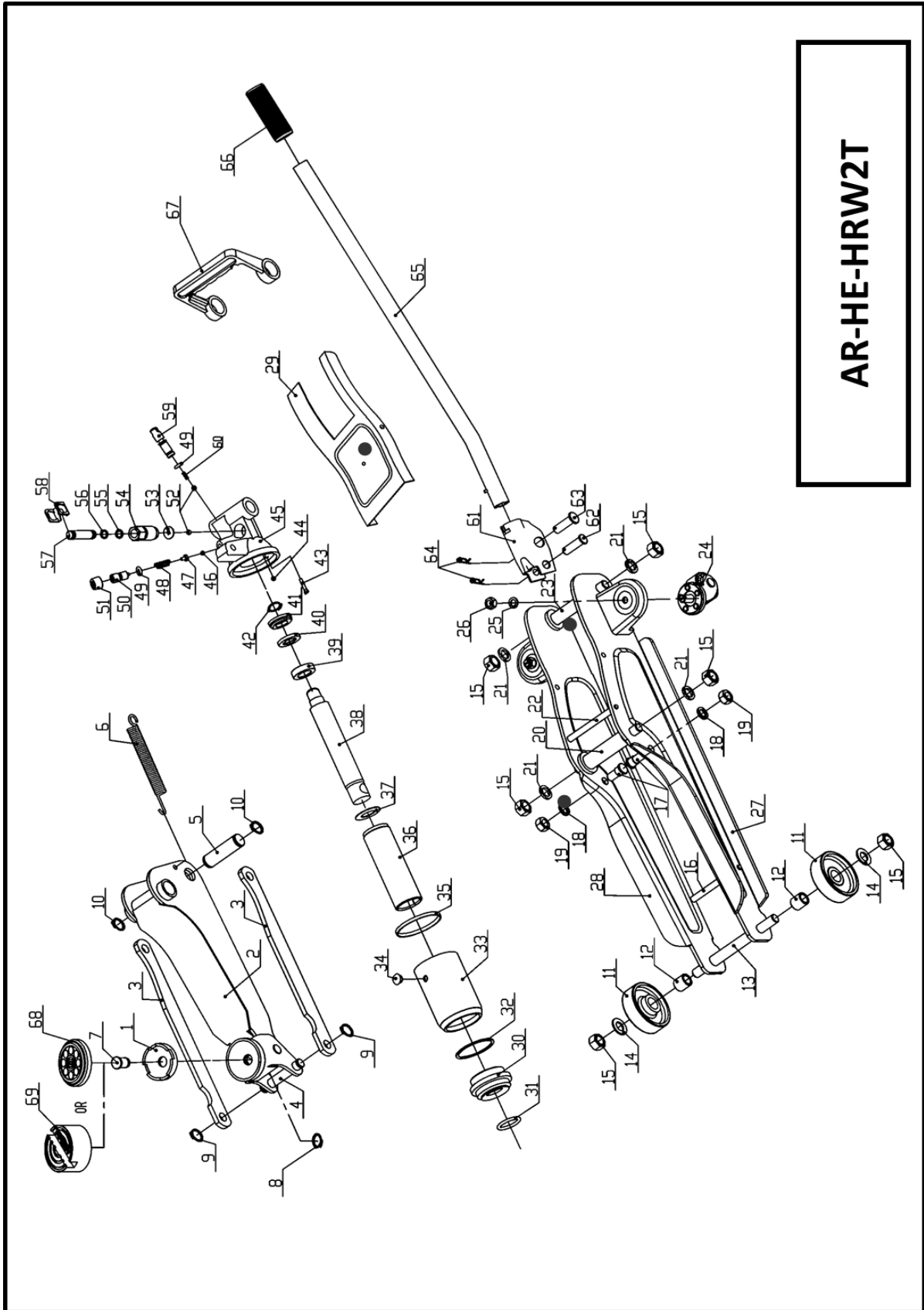
3.3.3 Lowering

- 1) Carefully remove all tools, parts, etc. from under the vehicle.
- 2) Position the Jack's Saddle under the lifting point. Turn the Release Knob firmly clockwise and raise vehicle high enough to clear the jack stands (Fig.2).
- 3) If using axle stands, raise the jack high enough for the stands to be easily removed. Carefully remove the jack stands.
- 4) Slowly turn the Release Knob counterclockwise to lower the vehicle onto the ground (Fig.4). Lower carefully, avoid any sudden changes in descent rate which would shock load the hydraulic system.
- 5) Lower the Jack completely. Store the Jack indoors out of children's reach.

WARNING!

Ensure there are no persons or obstacles beneath the vehicle, or in the path of its descent.

4. Explosion view



Part No.	description	Part No.	description	Part No.	description
1	Saddle	24	Rear Castor Assembly	47	Steel Ball Base
2	Lift Arm Assembly	25	Spring Washer M8	48	Safety Valve Spring
3	Radius Link	26	Nut M8	49	O-Ring ($\varnothing 6 \times \varnothing 3$)
4	Radius Link Axle	27	Frame, Left	50	Safety Valve Screw
5	Ram Plunger Axle	28	Frame, Right	51	Protection Cap
6	Return Spring	29	Cover Plate	52	Steel Ball 6.0mm
7	Saddle Pin	30	Top Nut	53	Flat Washer ($\varnothing 16 \times 4 \times 4 \times 1$)
8	External Circlip 13.0mm	31	O-Ring ($\varnothing 25 \times \varnothing 3.55$)	54	Pump
9	External Circlip 12.0mm	32	Reservoir	55	O-Ring ($\varnothing 7.7 \times \varnothing 1.9$)
10	External Circlip 17.0mm	33	RESERVOIR	56	Back-up Washer
11	Front Wheel	34	Oil Seal	57	Pump Piston
12	Front Wheel Bush	35	Wedge Ring	58	Connection Sleeve
13	Front Axle	36	Cylinder	59	Release Valve Rod
14	Flat Washer M12	37	Flat Washer ($\varnothing 34 \times \varnothing 23 \times 0.8$)	60	Release Spring
15	Steel Nut M12	38	Ram Plunger	61	Handle Socket
16	Frame Tie Rod	39	Bushing Cover	62	Handle Socket Pin (Upper)
17	Radius Link Stud	40	Back-up Washer	63	Handle Socket Pin (Lower)
18	Spring Washer M10	41	U-Cup Seal	64	Retaining Pin
19	Nut M10	42	External Circlip 16.0mm	65	Handle
20	Fixed Shaft (Centre)	43	Filter	66	Handle Grip
21	Spring Washer M12	44	Steel Ball 5.0mm	67	Carry Handle
22	Frame Tie Rod	45	Base	68	Rubber jack pad
23	Fixed Shaft	46	Steel Ball 4.0mm	69	Rubber jack pad

5. Maintenance of the jack

- **Before each use**, check for broken, cracked, bent, or loose parts, or any visible damage to ram, pump, saddle, lifting arm, frame and all parts including nuts, bolts, pins, and other fasteners. If any suspect item is found, remove jack from service and take necessary action to remedy the problem.
- **Periodically check** the pump piston and the ram for signs of corrosion. Clean exposed areas with a clean oiled cloth.
- **After one year**, the oil should be replaced in order to extend the life of the jack. Use hydraulic jack oil only.
- Jacks shall be maintained and repaired in accordance with the manufacturers instructions. Such maintenance and repair shall be carried out by qualified persons.
- No modifications shall be carried out which adversely affect the compliance of the jack with the standard, see specification section.
- Check the state of the markings and that the marking remains as the initial one.
- When the jack is not in use, the ram should be in its lowest position to minimize corrosion. Remove the handle to inactivate jack.
- Keep the jack clean and lubricate all moving parts on a regular basis.
- **To check the oil level**, fully lower the jack. Remove the two bolts that hold the black cover in place and prise out the cover from between the side walls of the jack. Remove oil filler plug (fig.2). The correct level is just below the bottom of the plug. If oil level is low, fill as required. Replace cover.
 - NOTE: Use a good quality jack oil
 - WARNING: DO NOT use brake fluid, or any fluid other than hydraulic jack oil as this may cause serious damage to the jack and will invalidate the warranty.
 - When draining the oil, make sure that no dirt is allowed to enter the hydraulic system.
 - **IMPORTANT: NO RESPONSIBILITY IS ACCEPTED FOR INCORRECT USE OF THIS PRODUCT.**
- **De-commissioning the Jack:** Should the jack become completely unserviceable and require disposal, draw off the oil into an approved container and dispose of the jack and the oil according to local regulations.

6. Troubleshooting

WARNING: DO NOT USE A DAMAGED OR MALFUNCTIONING JACK.

Issue	Possible Causes	Solutions
A. Jack Will Not Lift Load	A1. Oil level may be low.	A1. Check oil level as described in section 3.2 and top up if necessary.
	A2. Incomplete oil distribution or air trapped in the system.	A2. Follow this procedure: Close the release valve and manually pull the lifting arm up to its full height. Open the release valve and, by stepping on the saddle, force the arm to lower as rapidly as possible. Repeat three or four times. To eliminate trapped air, open the release valve and pump the handle through its full stroke six times. Close the release valve.
	A3. Worn pump 'O' ring seal.	A3. Take the jack to an approved agent for servicing.
	A4. Dirt on the valve seat holding the release valve open.	A4. Flush by pulling the lifting arm up and down several times manually while the release valve is open.
	A5. Load is heavier than 2 tons, causing the overload valve to operate.	A5. Remove the load and obtain a higher capacity jack. The overload valve is factory set and should not be altered.
B. Jack Will Not Hold the Load	B1. Discharge valve held open by dirt on the seat.	B1. Perform the procedure described in section 6.A2. If this does not solve the problem, take the jack to an approved agent for servicing.
	B2. Worn ram cup seal due to heavy service.	B2. Take the jack to an approved agent for servicing.
	B3. Release valve partially open.	B3. Fully close the release valve.
C. Jack Will Not Lower Completely	C1. Broken or unhooked lifting arm return spring.	C1. Replace the return spring.
	C2. Jack requires lubrication.	C2. Clean and oil all moving parts in the lifting arm mechanism.
	C3. Hydraulic unit overfilled with oil.	C3. Drain off excess oil.
D. Jack Will Not Lift Full 2 Ton Load	D1. Worn piston 'O' ring seal.	D1. Take the jack to an approved agent for servicing.

7. Specifications

Model	AR-HE- HRW2T
Max. Capacity of load	2000 KG
Min. Height of Saddle	85 mm
Max. Height of Saddle	385 mm
Diameter of saddle	48 mm
Front wheel diameter	66 mm
Rear wheel diameter	39 mm
Material	Steel
Length of handle	51 cm
Net weight	12.2 kg
Delivery Content	1x Trolley jack 4x Rubber pad 1x User Manual

8. Environmentally friendly disposal

Warning Danger of suffocation! Packaging material is dangerous for children. Never let children play with packaging material.

8.1 Disposal and packaging

- The packaging of your unit consists of materials that are necessary to guarantee effective protection during transport. These materials are fully recyclable and therefore reduce the environmental impact. Dispose of the packaging in a bin for recyclable materials.

8.2 Disposal of old equipment

- Old appliances must be disposed of in accordance with the guidelines and regulations of the local waste disposal authority. Check with your local administration for the address of the nearest recycling centre and deliver your appliance there.

Our customer service number: Tel. +44 (0) 208 068 5604

Fax: +49 (0) 931 4523 2799 / E-Mail: info@arebos.de

Office address: Canbolat Vertriebs GmbH • Gneisenaustraße 10-11 • 97074 Würzburg

Return address can be found in the imprint: <https://www.arebos.de/impressum/>

EC Declaration of Conformity

We, the

Canbolat Vertriebs GmbH, Gneisenaustraße 10-11, 97074 Würzburg, Germany

hereby declare that the equipment described below, by virtue of its design and construction and in the versions placed on the market by us, complies with the relevant essential health and safety requirements of the EU directives.

Product name: Hydraulic Trolley Jack 2 T

Model number: AR-HE- HRW2T

Article number: 4252023124881

Should the appliance be modified without our consent, this declaration of conformity will lose its validity.

Tested according to EU-Norm / Directives:

EN1494:2000+A1

AfPS GS 2019:01 PAK

Machinery Directive: 2006/42/EC

Date/Signature Manufacturer/Place:

Würzburg, June 10, 2024



Signature:

Dipl.-Inform. (Univ.) Korhan Canbolat, Managing Director

Representative of these instructions for use/technical data:

Dipl.-Inform. (Univ.) Korhan Canbolat, Managing Director

Office address:

Canbolat Vertriebs GmbH

Gneisenaustraße 10-11

D-97074 Würzburg

Return address can be found in the imprint: <https://www.arebos.de/impressum/>

VAT identification number: DE 263752326

Court of the Commercial Register is Würzburg, HRB 10082

WEEE Reg.-No. DE 61617071