

AREBOS

Hydraulic Trolley Jack 3 T

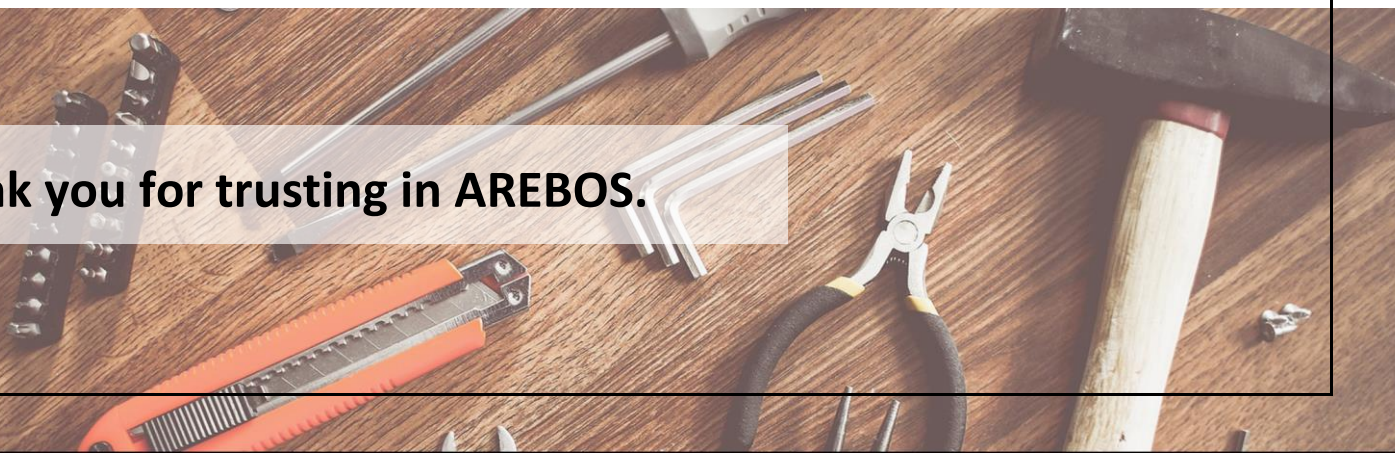
AR-HE-HRW3T



Please follow all security measures in this user's manual to ensure a secure use.



Thank you for trusting in AREBOS.



List of contents

1.Safety instructions.....	3
1.1 Explanation of the symbols	3
1.2 General safety instructions.....	4
2.Set Up.....	5
2.1 Overview of product.....	5
2.2 Control before use.....	5
2.3 Attaching the Handle.....	5
3. Operation	6
3.1 Bleeding	6
3.2 Adding Hydraulic Fluid	6
3.3 Lifting and Lowering	6
3.3.1 Lifting.....	7
3.3.2 Lowering.....	7
4.Explosion view.....	8
5.Maintenance of the jack	10
6.Troubleshooting	10
7. Specifications.....	11
8. Environmentally friendly disposal	11
8.1 Disposal and packaging.....	11
8.2 Disposal of old equipment.....	11
EC Declaration of Conformity	12

Thank you for purchasing our product. Please read the operating instructions carefully before using the product for the first time. If you give the product to a third party, this manual must be handed over with it. Keep the instruction manual for future reference. The drawings in this manual may not match the physical objects. Please refer to the physical objects.

1. Safety instructions

1.1 Explanation of the symbols



By means of a CE marking, it can be recognized that a product complies with the legal provisions of European legal standards and therefore may be traded within the European Community.



Warning! Read the safety instructions carefully. Failure to follow the safety precautions could result in serious injury or damage. Keep the operating instructions in a safe place.



Be careful when using this product.



Warning! Danger of crushing the hands.



This product has been tested and certified by TÜV Rheinland. The symbol "GS" stands for tested safety. Products marked with this symbol comply with the requirements of the German Product Safety Act (ProdSG).

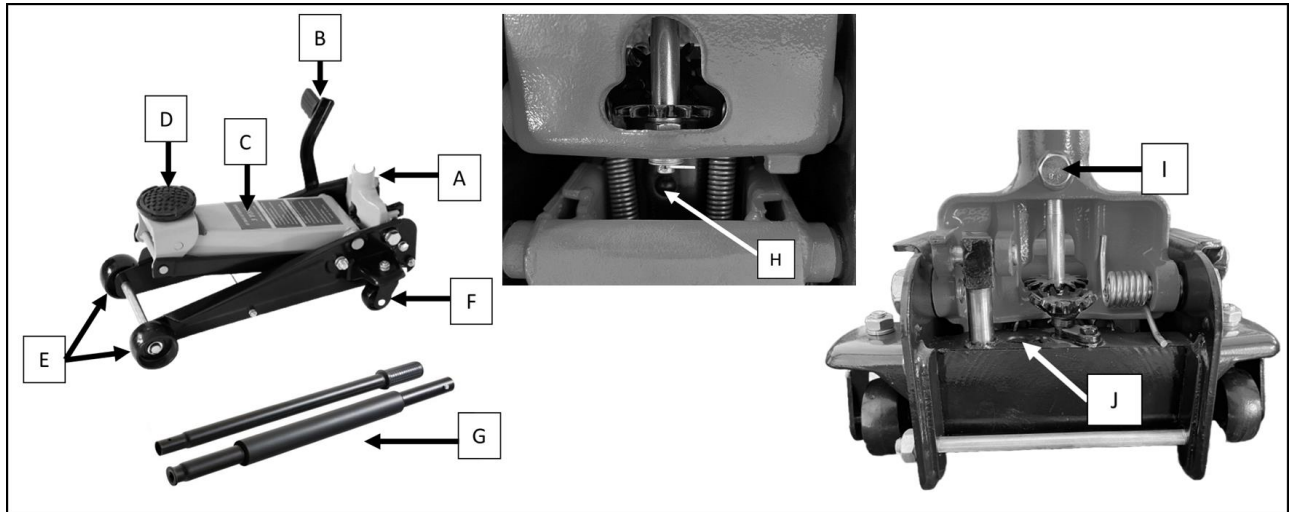
www.tuv.com
ID 1419072084

1.2 General safety instructions

- This jack is designed for lifting objects only and shall be supported by an adequate aid, such as a stand.
- Make sure that the lifted object is firmly fixed to the jack.
- Do not use the jack while persons are in or leaning against the vehicle.
- Do not exceed the permissible load.
- Do not use any extensions other than those attached to the jack.
- Wear safety goggles and heavy-duty work gloves during use.
- Use the jack only on a firm surface that can support the load.
- Make sure that the jack is central and stable with its support saddle under the object and the lifting point.
- You must ensure that the safety instructions and labels are always clearly visible and not soiled.
- Read the supplied instructions carefully before use.
- Failure to follow these instructions can lead to damage to the lift and/or the vehicle and/or a person.
- This manual should be kept in a safe place so that it can be used and/or maintained at a later date.
- This jack is filled with high quality hydraulic oil. Use suitable hydraulic oil at extremely low temperatures. Use only high-quality oil. Avoid mixing different oils. Never use brake fluid, alcohol, cleaning agents, turbine oil, gear oil, engine oil or glycerin or contaminated oils. The latter can cause damage to the jack or impair its function.
- Never adjust the adjusting screws on the hydraulic unit.
- The operator should watch the lifting device and the load during all movements.
- It is not allowed to work under the raised load until it is secured by suitable means.
- This jack is for lifting purposes only and it is not designed for the lifting of person.
- The hydraulic jack could not be operated in potentially explosive atmosphere and severe conditions, e.g. extreme climates, freezer application and strong magnetic fields.
- The hydraulic jack could not be operated in potentially explosive atmospheres, e.g. mines.
- Be careful of handling of loads, the nature of which could lead to dangerous situation, e.g. molten metal, acids, radiating materials, especially brittle loads.
- The A-weighted emission sound pressure level of this product is less than 70dB(A).
- Maybe residual risks unspecified in the label could be remained; always wear PPE during the operation.
- The product is not allowed to operate on sea ships.
- Do not use for aircraft purposes.
- The jack is designed to work at rated load in a temperature range of -20°C to +50°C.
- No modifications shall be carried out which adversely affect the compliance of the jack with standard EN 1494 or the essential requirements of the Machinery Directive 2006/42/EC.
- **IMPORTANT!** Before first use: Check hydraulic fluid level and fill to 1/4 " below the fill port as needed. Thoroughly test the Jack for proper operation. If it does not work properly, bleed air from its hydraulic system.

2. Set Up

2.1 Overview of product



- | | |
|--------------------------------|--------------------------|
| A. Handle Socket | H. Oil filler plug |
| B. Foot pedal | I. Knurled Knob |
| C. Lifting arm | J. Safety overload valve |
| D. Saddle | |
| E. Front wheel | |
| F. Rear wheel | |
| G. Handle (Upper + Lower part) | |

2.2 Control before use

- The jack must be inspected for any oil leaks and/or loose, damaged or missing parts before each use.
- The owner/user must always ensure that repairs can only be carried out by a suitable specialist or authorized dealer.

2.3 Attaching the Handle

- Assemble handle (G) by sliding the two parts together and rotating until the locking pin clicks into position.
- Partially unscrew knurled knob until handle (G) slides fully into socket (A).
- Tighten the knurled knob (I) to lock handle in place.

Before first use

- Before using the jack, purge hydraulic circuit in order to eliminate any possible air in the system by turning the handle anti-clockwise to open the release valve, and pumping 15 to 20 times. At the end of the last downward stroke shut the valve off again by turning the handle clockwise.
- Place a few drops of hydraulic jack oil on pump piston and pump handle several times to distribute oil. Thoroughly lubricate moving parts.

3. Operation

3.1 Bleeding

BEFORE EACH USE OR IF JACK PERFORMANCE DECREASES,

check for excessive air and proper hydraulic fluid level in Jack. If Jack appears not to be working properly, it may be necessary to purge its hydraulic system of excessive air as follows:

- 1) Remove the oil Filler Plug (H).
- 2) Twist the Handle counterclockwise to open the Valve.
- 3) Check fluid level and, if necessary, top off according to **chapter 3.2 below**.
- 4) Turn the Handle clockwise to close the valve, then pump the Handle quickly several times.
- 5) Refit Fill Plug.

IMPORTANT!

After bleeding the Jack, test the Jack for proper operation prior to its actual use.

- 6) If the Jack does not appear to be working properly after bleeding, do not use it until repaired by a qualified service technician.

3.2 Adding Hydraulic Fluid

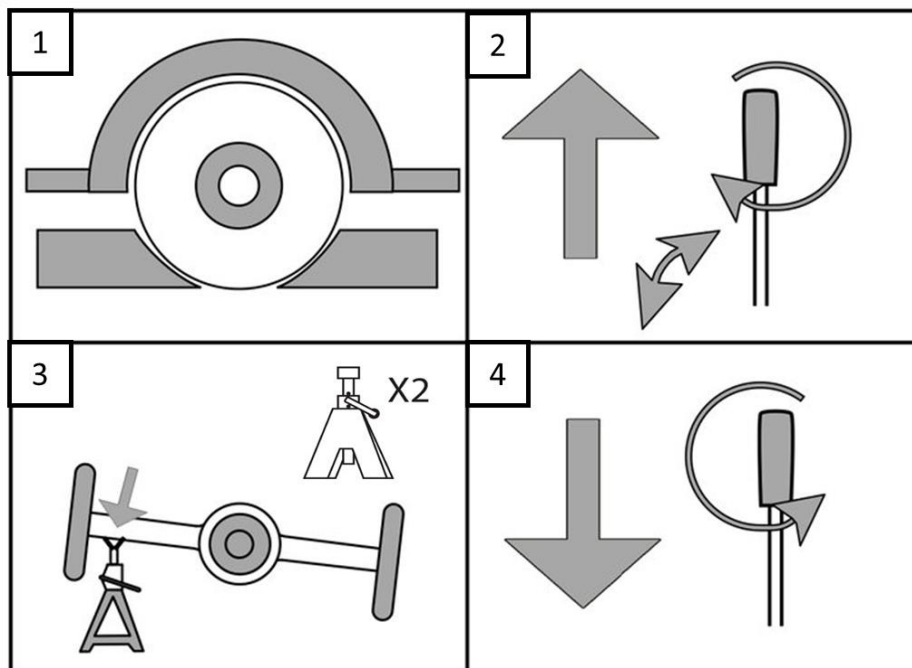
- 1) To check the oil level, fully lower the jack and remove filler plug.
- 2) Add good quality jack oil slowly until the fluid reaches 1/4 below the top of the Fill Port, if necessary.

Note

Use hydraulic jack oil only.

Do not touch the Handle when adding hydraulic fluid.

3.3 Lifting and Lowering



3.3.1 Lifting

- 1) Park vehicle on a flat, level, solid, surface safely away from oncoming traffic. Turn off the vehicle's engine. Place the vehicle's transmission in "PARK" (if automatic) or in its lowest gear (if manual). Set the vehicle's emergency brake. Then chock the wheels that are not being lifted (Fig.1).
- 2) Slowly twist the Handle counterclockwise to lower the Jack. Once the Jack is fully lowered, twist the Handle firmly clockwise.
- 3) Carefully position the Jack's Saddle under the vehicle manufacturer's recommended lifting point. (See vehicle manufacturer's owner's manual for location of frame lifting point.)
- 4) Pump the Handle until the top of the Saddle (D) has nearly reached the vehicle's lifting point. Position the Saddle directly under the vehicle's lifting point.
- 5) To lift the vehicle, pump the Handle, or use foot-pedal (B). Use smooth, full strokes (Fig.2).
- 6) Select matching jack stands of appropriate capacity. Set the jack stands to the same height according to the manufacturer's instructions, making sure they lock securely into position.
- 7) Position the jack stands' saddles under the vehicle manufacturer's recommended support points (Fig.3).

IMPORTANT!

Ensure that the vehicle support points are fully seated in the saddles of both jack stands. Use a matched pair of jack stands per vehicle to support one end only.

- 8) Slowly twist the Handle counterclockwise to lower the vehicle onto the jack stands' saddles (Fig.4).
- 9) Once the vehicle is fully seated on the jack stands, continue slowly lowering the Jack until it is completely lowered.

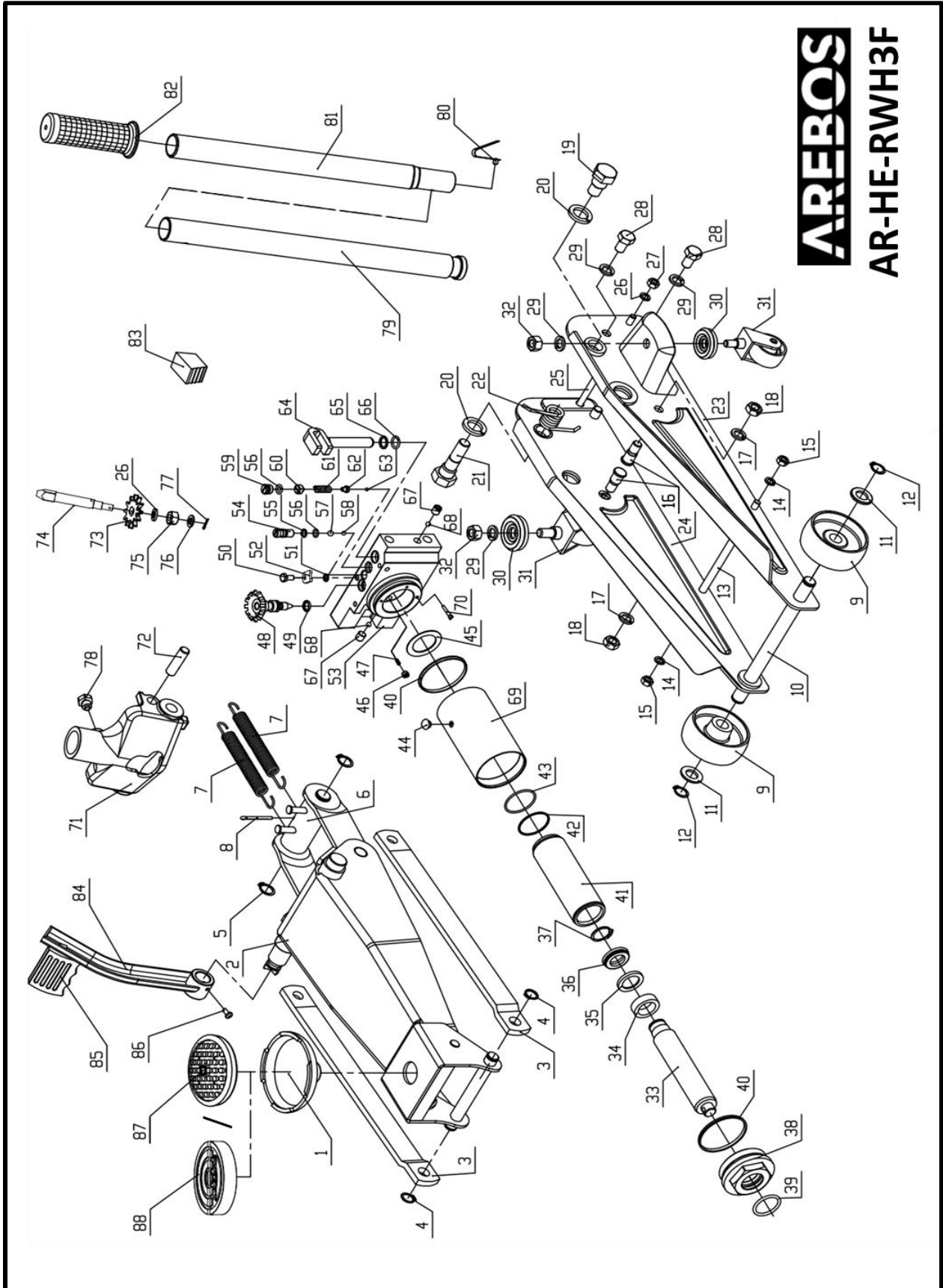
3.3.2 Lowering

- 1) Carefully remove all tools, parts, etc. from under the vehicle.
- 2) Position the Jack's Saddle under the lifting point. Turn the Release Knob firmly clockwise and raise vehicle high enough to clear the jack stands (Fig.2).
- 3) If using axle stands, raise the jack high enough for the stands to be easily removed. Carefully remove the jack stands.
- 4) Slowly turn the Release Knob counterclockwise to lower the vehicle onto the ground (Fig.4). Lower carefully, avoid any sudden changes in descent rate which would shock load the hydraulic system.
- 5) Lower the Jack completely. Store the Jack indoors out of children's reach.

WARNING!

Ensure there are no persons or obstacles beneath the vehicle, or in the path of its descent.

4. Explosion view



Part No.	description	Part No.	description	Part No.	description	Part No.	description
1	saddle	23	left side plate assembly	45	washer	67	screw
2	lifting arm assembly	24	right side plate assembly	46	throttle valve	68	steel ball
3	radius link	25	frame tie rod	47	spring	69	reservoir
4	lock washer	26	lock washer	48	release valve assembly	70	filter
5	lock washer	27	nut	49	o - ring	71	handle sleeve
6	core tube assembly	28	bolt	50	hex bolt	72	pin
7	returning spring	29	lock washer	51	washer	73	gear
8	retainer	30	bearings	52	washer	74	release valve lever
9	front wheel	31	bear caster assembly	53	base	75	hex thin nut
10	front axle	32	nut	54	screw	76	washer
11	washer	33	ram plunger	55	back-up washer	77	retainer
12	snap ring	34	bushing cover	56	o - ring	78	bolt
13	frame tie rod	35	back-up washer	57	steel ball	79	handle-I
14	lock washer	36	u-cup seal	58	steel ball	80	handle lock button
15	nut	37	snap ring	59	guard screw	81	handle -II
16	radius link stud	38	top nut	60	safety valve screw	82	handle grip
17	lock washer	39	o - ring	61	safety valve spring	83	handle lock block
18	nut	40	wedge ring	62	valve	84	pedal weld assembly
19	handle sleeve bolt -left	41	cylinder	63	steel ball	85	pedal
20	lock washer	42	back-up ring	64	pump piston	86	blot
21	handle sleeve bolt -right	43	o - ring	65	back-up washer	87	saddle pad
22	returning spring	44	oil seal	66	o - ring	88	saddle pad

5. Maintenance of the jack

- If you want to stow the jack, lower the jack to the lowest position and close the drain valve.
- Keep the jack clean. Lubricants should be applied to all moving parts every three months.
- Check the oil level regularly.
- Use good quality hydraulic jack oil only.
- Periodically check the pump piston and the ram for signs of corrosion.
- **Attention:** The life of the product of 5 years should not be exceeded due to signs of wear in order to ensure safe use of the product. This service life is based on proper and appropriate use.

6. Troubleshooting

WARNING: DO NOT USE A DAMAGED OR MALFUNCTIONING JACK.

PROBLEM	POSSIBLE CAUSE	REMEDY
Jack will not lift the load	<ol style="list-style-type: none"> 1) Overloaded 2) Oil level low 3) Release valve not correctly closed 4) Air in system 5) Piston rod not functioning 	<ol style="list-style-type: none"> 1) Be sure to use jack with adequate capacity 2) Top up oil level 3) Check and close release valve 4) Open release valve and pump the handle a few times. Close valve and re-try 5) Clean and replace oil
Jack does not lift high enough or feels “spongy”	<ol style="list-style-type: none"> 1) Oil level too high or too low 2) Air in system 3) Release valve not closed 	<ol style="list-style-type: none"> 1) Fill or remove excess oil 2) Open release valve and pump the handle a few times. Close valve and re-try 3) Check and close release valve
Jack lifts poorly	<ol style="list-style-type: none"> 1) Pump valve malfunctioning 2) Oil is dirty 3) Air in the system 	<ol style="list-style-type: none"> 1) clean valves 2) Replace oil 3) Open release valve and pump the handle a few times. Close valve and re-try
Jack lifts but will not hold load	<ol style="list-style-type: none"> 1) Release valve partially open 2) Dirt on valve seats 3) Air in system 	<ol style="list-style-type: none"> 1) Check and close release valve 2) Lower jack, close release valve. Place foot on front wheel and pull up lifting arm to its full height by hand. Open the release valve to lower arm 3) Open release valve and pump the handle a few times. Close valve and re-try.
Jack will not lower completely	<ol style="list-style-type: none"> 1) Unit requires lubrication 2) Piston rod bent or damaged 3) Air in system 4) Release valve partially closed 5) Jack spring damaged or unhooked. 	<ol style="list-style-type: none"> 1) Oil all external moving parts 2) Replace rod if broken 3) Open release valve and pump the handle a few times. Close valve and re-try 4) Check and fully open release valve 5) Replace spring if broken
Jack does not lower at all	<ol style="list-style-type: none"> 1) Release valve closed 	<ol style="list-style-type: none"> 1) Check and fully open release valve

7. Specifications

Model	AR-HE- RWH3F
Max. Capacity of load	3000 KG
Min. Height of Saddle	130 mm
Max. Height of Saddle	508 mm
Diameter of saddle	110 mm
Front wheel diameter	88 mm
Rear wheel diameter	58 mm
Material	Steel
Length of handle	104 cm
Net weight	33.45 kg
Delivery Content	1x Trolley jack (with handle / wheels) 1x Foot pedal 2x Rubber pad 1x User Manual

8. Environmentally friendly disposal

Warning Danger of suffocation! Packaging material is dangerous for children. Never let children play with packaging material.

8.1 Disposal and packaging

- The packaging of your unit consists of materials that are necessary to guarantee effective protection during transport. These materials are fully recyclable and therefore reduce the environmental impact. Dispose of the packaging in a bin for recyclable materials.

8.2 Disposal of old equipment

- Old appliances must be disposed of in accordance with the guidelines and regulations of the local waste disposal authority. Check with your local administration for the address of the nearest recycling centre and deliver your appliance there.

Our customer service number: Tel. +44 (0) 208 068 5604

Fax: +49 (0) 931 4523 2799 / E-Mail: info@arebos.de

Office address: Canbolat Vertriebs GmbH • Gneisenastraße 10-11 • 97074 Würzburg

Return address can be found in the imprint: <https://www.arebos.de/impressum/>

EC Declaration of Conformity

We, the

Canbolat Vertriebs GmbH, Gneisenaustraße 10-11, 97074 Würzburg, Germany

hereby declare that the equipment described below, by virtue of its design and construction and in the versions placed on the market by us, complies with the relevant essential health and safety requirements of the EU directives.

Product name: Hydraulic Trolley Jack 3 T
Model number: AR-HE- RWH3F
Article number: 4252023112260

Should the appliance be modified without our consent, this declaration of conformity will lose its validity.

Tested according to EU-Norm / Directives:
EN1494:2000+A1
AfPS GS 2019:01 PAK
Machinery Directive: 2006/42/EC

Date/Signature Manufacturer/Place:

Würzburg, January 4, 2023



Signature:
Dipl.-Inform. (Univ.) Korhan Canbolat, Managing Director

Representative of these instructions for use/technical data:
Dipl.-Inform. (Univ.) Korhan Canbolat, Managing Director

Office address:
Canbolat Vertriebs GmbH
Gneisenaustraße 10-11
D-97074 Würzburg

Return address can be found in the imprint: <https://www.arebos.de/impressum/>

VAT identification number: DE 263752326
Court of the Commercial Register is Würzburg, HRB 10082
WEEE Reg.-No. DE 61617071

AREBOS

Axle stand 3T

AR-HE-UB 3



Please follow all security measures in this user's manual to ensure a secure use.

Thank you for trusting in AREBOS.

List of contents

1. Safety	3
1.1 Safety signs	3
1.2 Safety instructions	3
2. Product Overview	5
3. Technical specifications	6
4. Operation	6
5. Maintenance	7
6. Disposal instruction	7
6.1 Disposal of the packaging	7
6.2 Disposal of waste equipment	7
Imprint	8

Please read and save these instructions. Read through this user's manual carefully before using this product. Protect yourself and others by observing all safety information, warnings and cautions. Failure to comply with instructions could result in personal injury and/or damage to product or property. Please retain instructions for future reference.

1. Safety

1.1 Safety signs



Warning! Read the safety instructions carefully. Failure to follow the safety precautions could result in serious injury or damage. Keep the operating instructions in a safe place.



Warning! Danger of crushing hands!



Warning! Use the article with care

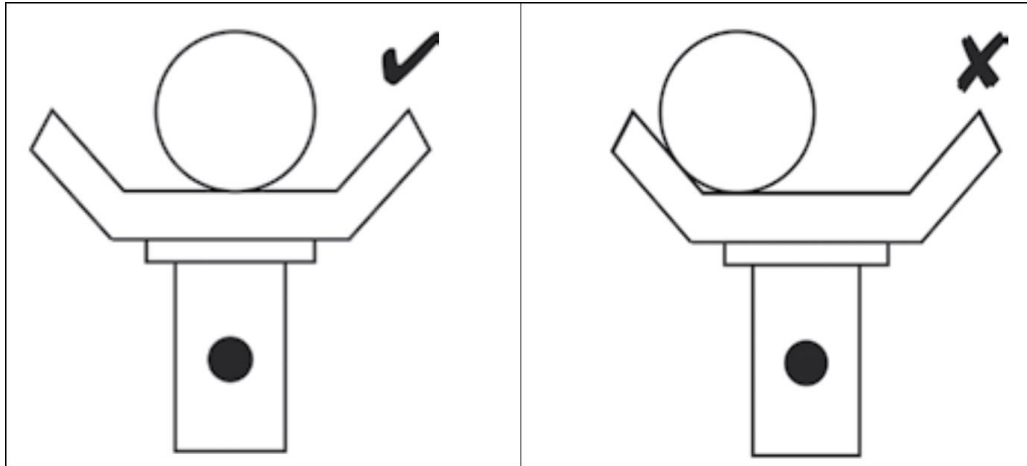
1.2 Safety instructions

WARNING!

- Do not overload axle stands beyond rated capacity.
- Overloading can cause damage to, or failure of, the axle stands.
- Position load on center of crutch/saddle only.
- Always use stands in pairs on hard level surface capable of sustaining the load.
- Do not use on tar macadam.
- Use of stands on other than hard level surfaces can result in load instability and possible loss of load.
- Failure to follow these instructions may result in damage to axle stands, loss of load resulting in property damage, serious personal injury or loss of life.

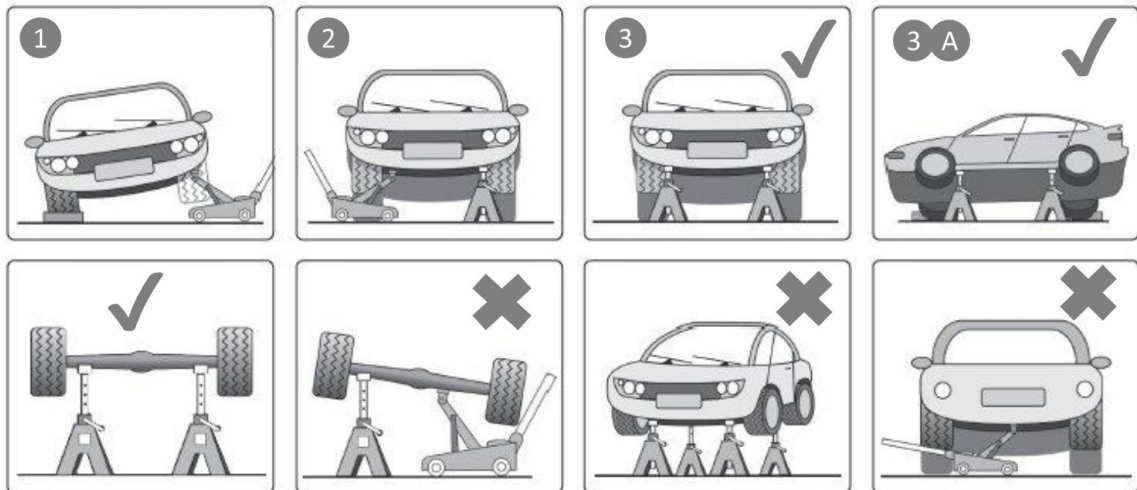
DANGER!

- Great care must be taken to ensure you lower the vehicle (or other load) slowly and carefully onto the centers of the crutch/saddle of the axle stands.



- Use only as specified by the manufacturer.
- No alterations or modifications shall be made to this product.
- Ensure the load does not exceed the maximum capacity as marked on the axle stand, per pair.
- Use no more than a single pair of stands either on the front, rear or one side of the vehicle. Use in pairs.
- Use on a hard, level surface, e.g., concrete. Do not use on uneven ground or tarmacadam.
- Securely chock wheels in contact with the ground. Before jacking and placing the stands, apply vehicle handbrake (put automatics in 'Park').
- Make sure that each stand is securely located under a strong point on the vehicle; consult the vehicle manufacturer's handbook for guidance. Ensure that height adjust locking mechanism is fully located before applying any load to the axle stand.
- Ensure that the load is located centrally on the saddle, and that the weight is directed through the vertical axis of the stand.
- Exercise extra care when using with a three wheeled vehicle or a trailer. Refer to vehicle manufacturer's instructions.
- Once vehicle is supported, ensure that the vehicle and stands are stable before starting work. Ensure that it is not possible for the vehicle to move before commencing any work.
- Before commencing any work or going beneath the vehicle, undertake a risk assessment. Ensure that a responsible person is aware of the work about to be undertaken.
- Inspect stands before each use. DO NOT use if they show signs of damage. DO NOT use if it is suspected that they have been overloaded.
- DO NOT use axle stands on the highway, or anywhere else if it is deemed to be unsafe.
- DO NOT push or twist the vehicle/load whilst it is supported on stands.
- DO NOT mix components between stands. Use only as supplied.
- DO NOT allow children or animals in the vicinity of a vehicle supported on axle stands.
- DO NOT leave a vehicle on axle stands in an area that could be considered a hazard to others or property.

- PLEASE FOLLOW STEPS 1, 2 AND 3 TO CORRECTLY PLACE VEHICLE/LOAD ONTO AXLE STANDS.



2. Product Overview

Explosive View	Part number	Part name
<p>The diagram shows an exploded view of the axle stand. Part 1 is a rubber pad. Part 2 is the ratchet assembly. Part 3 is the frame assembly. Part 4 is the axle assembly. Part 5 is a chain. Part 6 is a chain ring. Part 7 is a washer. Part 8 is a screw. The stand is labeled 'STON'.</p>	1	Rubber Pad
	2	Ratchet assembly
	3	Frame assembly
	4	Axle assembly
	5	Chain
	6	Chain Ring
	7	Washer
	8	Screw

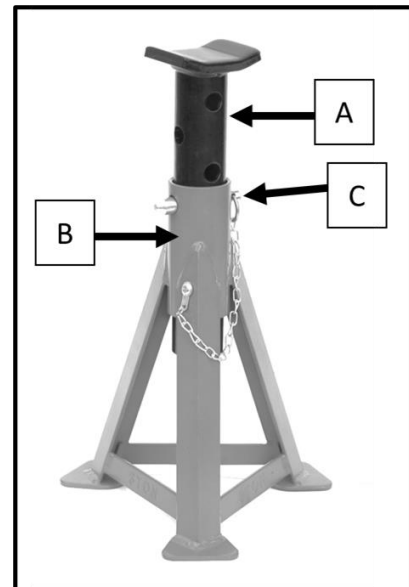
3. Technical specifications

- Changes are reserved.

Modell	AR-HE-UB3
Capacity	3000 kg
Min. HEIGHT (Without Saddle Pad)	295 mm
Max. HEIGHT (Without Saddle Pad)	438 mm
Min. HEIGHT (With Saddle Pad)	299 mm
Max. HEIGHT (With Saddle Pad)	442 mm
Net Weight	5.62 kg
Dimensions	254mm x 223mm x 295-442mm

4. Operation

- Familiarise yourself with the product. Check that the stands are in good condition and that no damage has been sustained during transit. Insert the centre column (A) in the centre tube (B), adjust to height required and insert the locking pin (C).
- Ensure the maximum load does not exceed 3 tons.
- Refer to vehicle manufacturer's instructions for recommended support points. Check that the points are in good condition.
- Ensure the vehicle brake is on (or in park mode) and wheels are chocked.
- Adjust height of stand to correspond with the raised vehicle.
- Check that the locking pin is correctly pushed all the way through the centre column and out of the other side, then position stands under vehicle at points recommended by vehicle manufacturer.
- Carefully and slowly lower the load onto stands. Ensure the load bearing points sit in the center of the stand saddle and check that the stands are stable and not leaning. Also ensure that there are no objects or persons that could impede the safe lowering of the vehicle onto the stands.
- To remove stands jack vehicle slightly so that stand can be removed.
- After use, hold the centre column (B) firmly when removing the locking pin (C). Failure to do so will allow the center column to fall freely through the main center tube which could be dangerous.



WARNING!

- **Ensure you follow all instructions carefully. Failure to note these warnings may cause damage, serious injury or loss of life.**

5. Maintenance

- Check the stands for optical defects such as scratches, cracks, missing or damaged parts. If you find any damage, do not use the jack.

WARNING! Any stand that appears to be damaged in any way must be removed from service immediately.

- Immediately replace defective parts by contacting the seller.
- Ensure the locking pins are in good order and condition.
- Due to the potential hazards associated with these stands, do not misuse, or make any modification to the stands or components.
- It is the responsibility of the stands owner to ensure the operator has read these instructions, and that the operator is familiar with the stands use and limitations.

6. Disposal instruction

6.1 Disposal of the packaging

- Please make reference to the guidelines and standards for appropriate disposal of the packaging valid in your region. In part, the package may consist of plastic bags - watch this respect, with special care to ensure that this is not out of the reach of children. There is a risk of suffocation!

6.2 Disposal of waste equipment

- Equipment must be disposed of in accordance with the rules and regulations of the local waste disposal.
- At the end of the long life of your article, please dispose of the valuable raw materials for proper disposal so that proper recycling can take place. If you are not sure how to proceed, the local waste disposal companies or recycling centers are happy to help.

Our customer service number: +49 (0) 931-45232700

Canbolat Vertriebs GmbH • Gneisenaustraße 10-11 • 97074 Würzburg

Imprint

Name of the product: Arebos Axle stand 3t (pair)
Model Nr.: AR-HE-UB3
Art. Nr.: 4252023112277

If the product has any modification not allowed by us, this declaration loses its validity.

Date/Manufacturer Signature/Location:

Würzburg, 23/12/2022



Identification of the signatory:
Korhan Canbolat, head of the company

Authorised representative for the technical documentation:
Korhan Canbolat

Office address:
Canbolat Vertriebs GmbH
Gneisenaustraße 10-11
D-97074 Würzburg

Return address can be found in the imprint: <https://www.arebos.de/impressum/>

VAT identification number: DE 263752326
Court of the Commercial Register is Würzburg, HRB 10082
WEEE Reg.-No. DE 61617071