

AREBOS

Hydraulic Trolley Jack 3 T

AR-HE-RWH3F



Please follow all security measures in this user's manual to ensure a secure use.



Thank you for trusting in AREBOS.



List of contents

1. Safety instructions	3
1.1 Explanation of the symbols	3
1.2 General safety instructions	3
2. Set Up	5
2.1 Overview of product.....	5
2.2 Control before use.....	5
2.3 Attaching the Handle.....	5
3. Operation	6
3.1 Bleeding.....	6
3.2 Adding Hydraulic Fluid.....	6
3.3 Lifting and Lowering.....	7
3.3.1 Lifting.....	7
3.3.2 Lowering.....	8
4. Explosion view	9
5. Maintenance of the jack.....	11
6. Troubleshooting.....	11
7. Specifications	12
8. Environmentally friendly disposal.....	12
8.1 Disposal and packaging	12
8.2 Disposal of old equipment.....	12
EC Declaration of Conformity	13

Thank you for purchasing our product. Please read the operating instructions carefully before using the product for the first time. If you give the product to a third party, this manual must be handed over with it. Keep the instruction manual for future reference. The drawings in this manual may not match the physical objects. Please refer to the physical objects.

1. Safety instructions

1.1 Explanation of the symbols



By means of a CE marking, it can be recognized that a product complies with the legal provisions of European legal standards and therefore may be traded within the European Community.



Warning! Read the safety instructions carefully. Failure to follow the safety precautions could result in serious injury or damage. Keep the operating instructions in a safe place.



Be careful when using this product.



Warning! Danger of crushing the hands.



This product has been tested and certified by TÜV Rheinland. The symbol "GS" stands for tested safety. Products marked with this symbol comply with the requirements of the German Product Safety Act (ProdSG).

www.tuv.com
ID 1111265036

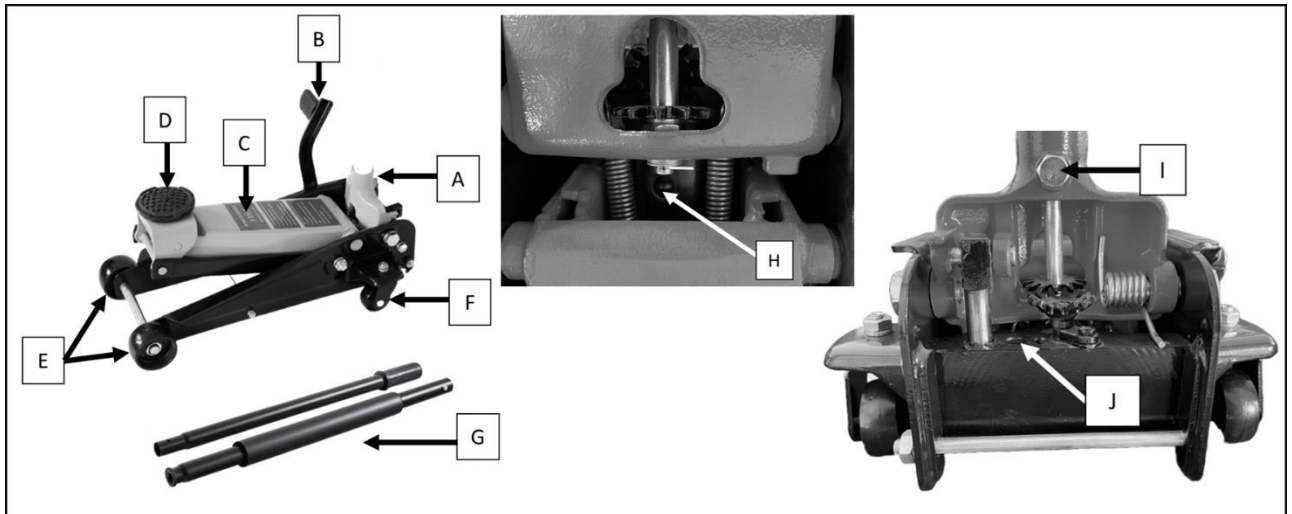
1.2 General safety instructions

- This jack is designed for lifting objects only and shall be supported by an adequate aid, such as a stand.
- Make sure that the lifted object is firmly fixed to the jack.
- Do not use the jack while persons are in or leaning against the vehicle.
- Do not exceed the permissible load.
- Do not use any extensions other than those attached to the jack.

- Wear safety goggles and heavy-duty work gloves during use.
- Use the jack only on a firm surface that can support the load.
- Make sure that the jack is central and stable with its support saddle under the object and the lifting point.
- You must ensure that the safety instructions and labels are always clearly visible and not soiled.
- Read the supplied instructions carefully before use.
- Failure to follow these instructions can lead to damage to the lift and/or the vehicle and/or a person.
- This manual should be kept in a safe place so that it can be used and/or maintained at a later date.
- This jack is filled with high quality hydraulic oil. Use suitable hydraulic oil at extremely low temperatures. Use only high-quality oil. Avoid mixing different oils. Never use brake fluid, alcohol, cleaning agents, turbine oil, gear oil, engine oil or glycerin or contaminated oils. The latter can cause damage to the jack or impair its function.
- Never adjust the adjusting screws on the hydraulic unit.
- The operator should watch the lifting device and the load during all movements.
- It is not allowed to work under the raised load until it is secured by suitable means.
- This jack is for lifting purposes only and it is not designed for the lifting of person.
- The hydraulic jack could not be operated in potentially explosive atmosphere and severe conditions, e.g. extreme climates, freezer application and strong magnetic fields.
- The hydraulic jack could not be operated in potentially explosive atmospheres, e.g. mines.
- Be careful of handling of loads, the nature of which could lead to dangerous situation, e.g. molten metal, acids, radiating materials, especially brittle loads.
- The A-weighted emission sound pressure level of this product is less than 70dB(A).
- Maybe residual risks unspecified in the label could be remained; always wear PPE during the operation.
- The product is not allowed to operate on sea ships.
- Do not use for aircraft purposes.
- The jack is designed to work at rated load in a temperature range of -20°C to +50°C.
- No modifications shall be carried out which adversely affect the compliance of the jack with standard EN 1494 or the essential requirements of the Machinery Directive 2006/42/EC.
- **IMPORTANT!** Before first use: Check hydraulic fluid level and fill to 1/4 " below the fill port as needed. Thoroughly test the Jack for proper operation. If it does not work properly, bleed air from its hydraulic system.
- The hydraulic jack shall be operated by additional person to lower the manual force on handle.
- The product is not allowed to contact with foodstuffs directly.

2. Set Up

2.1 Overview of product



- | | |
|--------------------------------|--------------------------|
| A. Handle Socket | H. Oil seal screw |
| B. Foot pedal | I. Knurled Knob |
| C. Lifting arm | J. Safety overload valve |
| D. Saddle | |
| E. Front wheel | |
| F. Rear wheel | |
| G. Handle (Upper + Lower part) | |

2.2 Control before use

- The jack must be inspected for any oil leaks and/or loose, damaged or missing parts before each use.
- The owner/user must always ensure that repairs can only be carried out by a suitable specialist or authorized dealer.

2.3 Attaching the Handle

- Assemble handle (G) by sliding the two parts together and rotating until the locking pin clicks into position.
- Partially unscrew knurled knob until handle (G) slides fully into socket (A).
- Tighten the knurled knob (I) to lock handle in place.

Before first use

- Before using the jack, purge hydraulic circuit in order to eliminate any possible air in the system by turning the handle anti-clockwise to open the release valve, and pumping 15 to 20 times. At the end of the last downward stroke shut the valve off again by turning the handle clockwise.
- Place a few drops of hydraulic jack oil on pump piston and pump handle several times to distribute oil. Thoroughly lubricate moving parts.

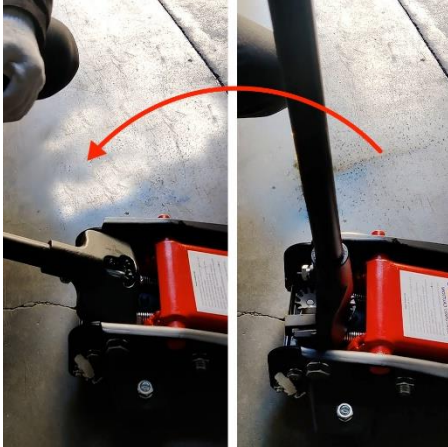
3. Operation

3.1 Bleeding

BEFORE EACH USE OR IF JACK PERFORMANCE DECREASES,

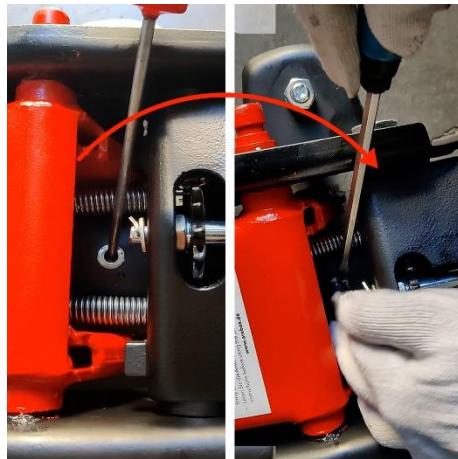
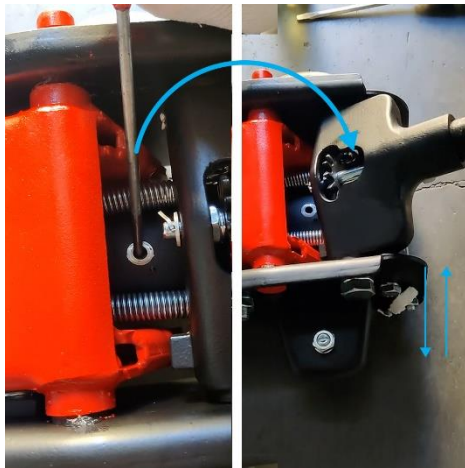
check for excessive air and proper hydraulic fluid level in Jack. If Jack appears not to be working properly, it may be necessary to purge its hydraulic system of excessive air as follows:

1. Fold the handle all the way back
2. Loosen the screw to fill the oil with the help of a screwdriver



3. Top up with hydraulic oil and pump with the handle a few times to release excess air

4. Refill the oil and seal the oil inlet screw



IMPORTANT!

After bleeding the Jack, test the Jack for proper operation prior to its actual use.

- 1) If the Jack does not appear to be working properly after bleeding, do not use it until repaired by a qualified service technician.

3.2 Adding Hydraulic Fluid

- 1) To check the oil level, fully lower the jack and remove oil seal screw (H).

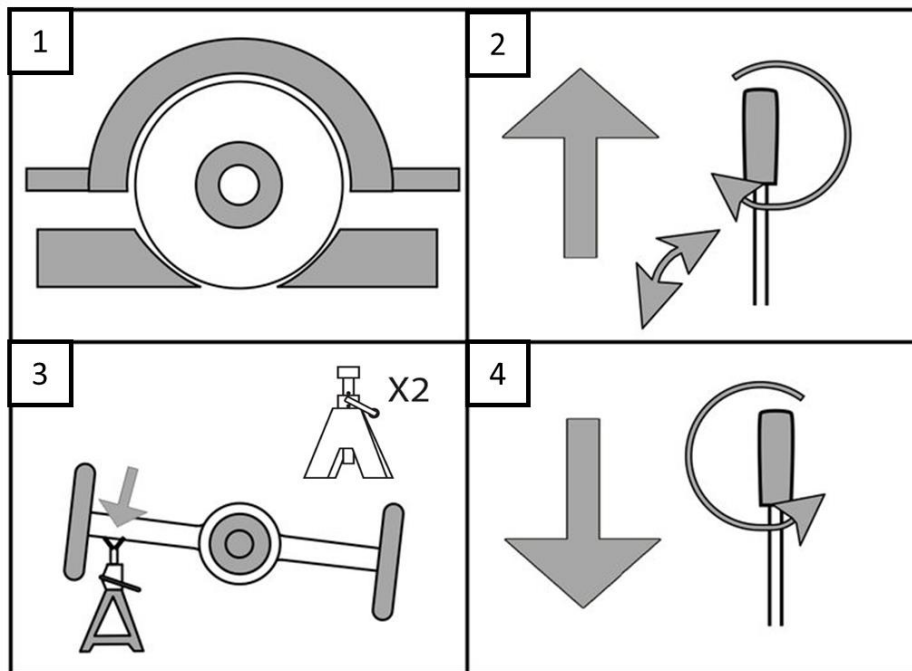
- 2) Add good quality jack oil slowly until the fluid reaches 1/4 below the top of the Fill Port, if necessary.

Note

Use hydraulic jack oil only.

Do not touch the Handle when adding hydraulic fluid.

3.3 Lifting and Lowering



3.3.1 Lifting

- 1) Park vehicle on a flat, level, solid, surface safely away from oncoming traffic. Turn off the vehicle's engine. Place the vehicle's transmission in "PARK" (if automatic) or in its lowest gear (if manual). Set the vehicle's emergency brake. Then chock the wheels that are not being lifted (Fig.1).
- 2) Slowly twist the Handle counterclockwise to lower the Jack. Once the Jack is fully lowered, twist the Handle firmly clockwise.
- 3) Carefully position the Jack's Saddle under the vehicle manufacturer's recommended lifting point. (See vehicle manufacturer's owner's manual for location of frame lifting point.)
- 4) Pump the Handle until the top of the Saddle (D) has nearly reached the vehicle's lifting point. Position the Saddle directly under the vehicle's lifting point.
- 5) To lift the vehicle, pump the Handle, or use foot-pedal (B). Use smooth, full strokes (Fig.2).
- 6) Select matching jack stands of appropriate capacity. Set the jack stands to the same height according to the manufacturer's instructions, making sure they lock securely into position.
- 7) Position the jack stands' saddles under the vehicle manufacturer's recommended support points (Fig.3).

IMPORTANT!

Ensure that the vehicle support points are fully seated in the saddles of both jack stands. Use a matched pair of jack stands per vehicle to support one end only.

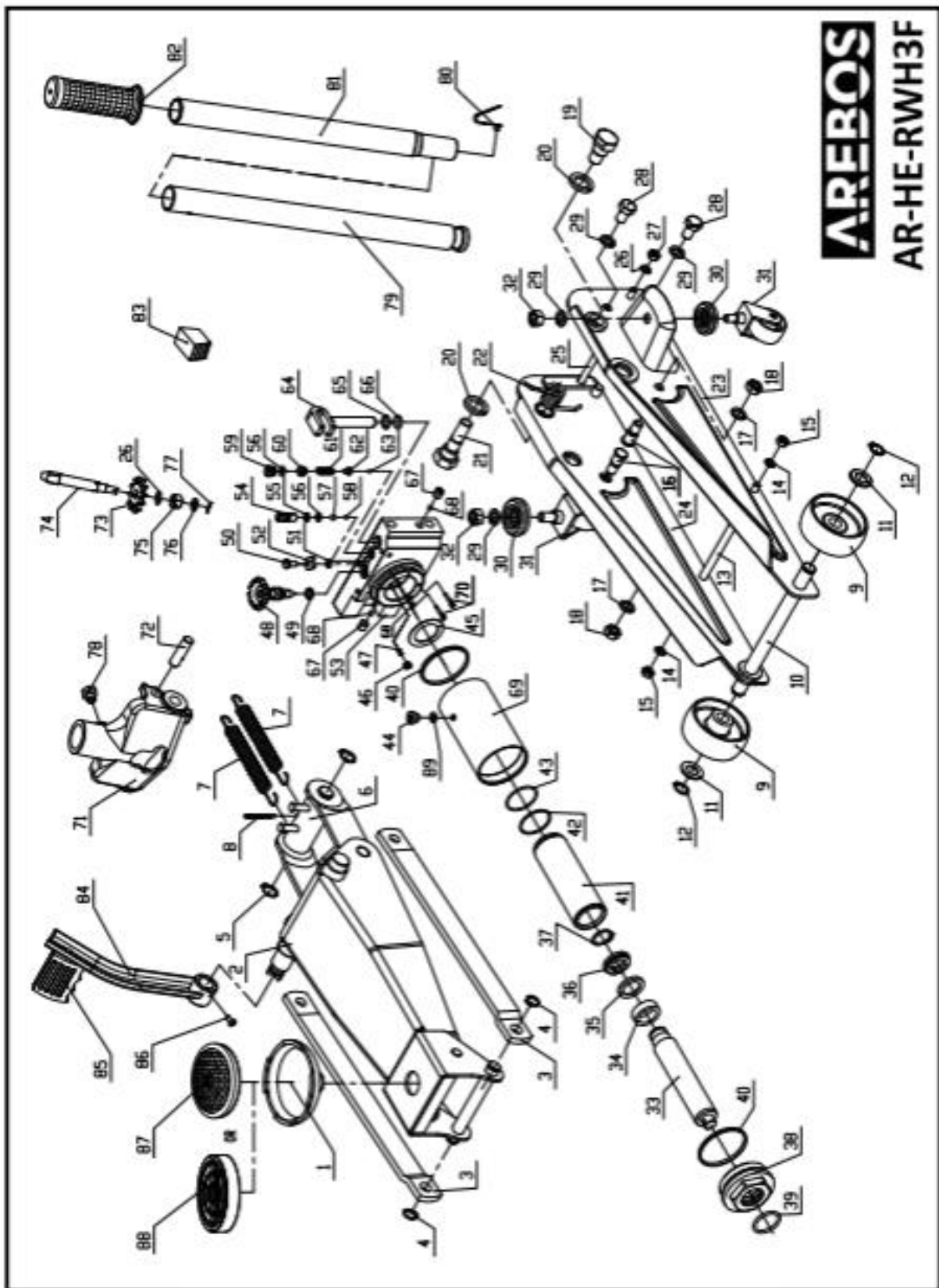
- 8) Slowly twist the Handle counterclockwise to lower the vehicle onto the jack stands' saddles (Fig.4).
- 9) Once the vehicle is fully seated on the jack stands, continue slowly lowering the Jack until it is completely lowered.

3.3.2 Lowering

- 1) Carefully remove all tools, parts, etc. from under the vehicle.
- 2) Position the Jack's Saddle under the lifting point. Turn the Release Knob firmly clockwise and raise vehicle high enough to clear the jack stands (Fig.2).
- 3) If using axle stands, raise the jack high enough for the stands to be easily removed. Carefully remove the jack stands.
- 4) Slowly turn the Release Knob counterclockwise to lower the vehicle onto the ground (Fig.4). Lower carefully, avoid any sudden changes in descent rate which would shock load the hydraulic system.
- 5) Lower the Jack completely. Store the Jack indoors out of children's reach.

WARNING!
Ensure there are no persons or obstacles beneath the vehicle, or in the path of its descent.

4. Explosion view



Original User Manual – AREBOS Hydraulic Trolley Jack 3 Ton

Part No.	description	Part No.	description	Part No.	description	Part No.	description
1	saddle	23	left side plate assembly	45	washer	67	screw
2	lifting arm assembly	24	right side plate assembly	46	throttle valve	68	steel ball
3	radius link	25	frame tie rod	47	spring	69	reservoir
4	lock washer	26	lock washer	48	release valve assembly	70	filter
5	lock washer	27	nut	49	o - ring	71	handle sleeve
6	core tube assembly	28	bolt	50	hex bolt	72	pin
7	returning spring	29	lock washer	51	washer	73	gear
8	retainer	30	bearings	52	washer	74	release valve lever
9	front wheel	31	bear caster assembly	53	base	75	hex thin nut
10	front axle	32	nut	54	screw	76	washer
11	washer	33	ram plunger	55	back-up washer	77	retainer
12	snap ring	34	bushing cover	56	o - ring	78	bolt
13	frame tie rod	35	back-up washer	57	steel ball	79	handle-I
14	lock washer	36	u-cup seal	58	steel ball	80	handle lock button
15	nut	37	snap ring	59	guard screw	81	handle -II
16	radius link stud	38	top nut	60	safety valve screw	82	handle grip
17	lock washer	39	o - ring	61	safety valve spring	83	handle lock block
18	nut	40	wedge ring	62	valve	84	pedal weld assembly
19	handle sleeve bolt -left	41	cylinder	63	steel ball	85	pedal
20	lock washer	42	back-up ring	64	pump piston	86	blot
21	handle sleeve bolt -right	43	o - ring	65	back-up washer	87	saddle pad
22	returning spring	44	oil seal screw	66	o - ring	88	saddle pad

89	O-ring						
----	--------	--	--	--	--	--	--

5. Maintenance of the jack

- If you want to stow the jack, lower the jack to the lowest position and close the drain valve.
- Keep the jack clean. Lubricants should be applied to all moving parts every three months.
- Check the oil level regularly.
- Use good quality hydraulic jack oil only.
- Periodically check the pump piston and the ram for signs of corrosion.
- **Attention:** The life of the product of 5 years should not be exceeded due to signs of wear in order to ensure safe use of the product. This service life is based on proper and appropriate use.

6. Troubleshooting

WARNING: DO NOT USE A DAMAGED OR MALFUNCTIONING JACK.

PROBLEM	POSSIBLE CAUSE	REMEDY
Jack will not lift the load	<ol style="list-style-type: none"> 1) Overloaded 2) Oil level low 3) Release valve not correctly closed 4) Air in system 5) Piston rod not functioning 	<ol style="list-style-type: none"> 1) Be sure to use jack with adequate capacity 2) Top up oil level 3) Check and close release valve 4) Open release valve and pump the handle a few times. Close valve and re-try 5) Clean and replace oil
Jack does not lift high enough or feels "spongy"	<ol style="list-style-type: none"> 1) Oil level too high or too low 2) Air in system 3) Release valve not closed 	<ol style="list-style-type: none"> 1) Fill or remove excess oil 2) Open release valve and pump the handle a few times. Close valve and re-try 3) Check and close release valve
Jack lifts poorly	<ol style="list-style-type: none"> 1) Pump valve malfunctioning 2) Oil is dirty 3) Air in the system 	<ol style="list-style-type: none"> 1) clean valves 2) Replace oil 3) Open release valve and pump the handle a few times. Close valve and re-try
Jack lifts but will not hold load	<ol style="list-style-type: none"> 1) Release valve partially open 2) Dirt on valve seats 3) Air in system 	<ol style="list-style-type: none"> 1) Check and close release valve 2) Lower jack, close release valve. Place foot on front wheel and pull up lifting arm to its full height by hand. Open the release valve to lower arm 3) Open release valve and pump the handle a few times. Close valve and re-try.
Jack will not lower completely	<ol style="list-style-type: none"> 1) Unit requires lubrication 2) Piston rod bent or damaged 3) Air in system 	<ol style="list-style-type: none"> 1) Oil all external moving parts 2) Replace rod if broken 3) Open release valve and pump the handle a few times. Close valve and re-try 4) Check and fully open release valve

	4) Release valve partially closed 5) Jack spring damaged or unhooked.	5) Replace spring if broken
Jack does not lower at all	1) Release valve closed	1) Check and fully open release valve

7. Specifications

Model	AR-HE- RWH3F
Max. Capacity of load	3000 KG
Min. Height of Saddle	130 mm
Max. Height of Saddle	508 mm
Diameter of saddle	110 mm
Front wheel diameter	88 mm
Rear wheel diameter	58 mm
Material	Steel
Length of handle	104 cm
Net weight	33.45 kg
Delivery Content	1x Trolley jack (with handle / wheels) 1x Foot pedal 2x Rubber pad 1x User Manual

8. Environmentally friendly disposal

Warning Danger of suffocation! Packaging material is dangerous for children. Never let children play with packaging material.

8.1 Disposal and packaging

- The packaging of your unit consists of materials that are necessary to guarantee effective protection during transport. These materials are fully recyclable and therefore reduce the environmental impact. Dispose of the packaging in a bin for recyclable materials.

8.2 Disposal of old equipment

- Old appliances must be disposed of in accordance with the guidelines and regulations of the local waste disposal authority. Check with your local administration for the address of the nearest recycling centre and deliver your appliance there.

Our customer service number: Tel. + 49 931 452 327 00

E-Mail: info@arebos.de

Office address: Canbolat Vertriebs GmbH • Gneisenaustraße 10-11 • 97074 Würzburg

Return address can be found in the imprint: <https://www.arebos.de/impressum/>

EC Declaration of Conformity

We, the

Canbolat Vertriebs GmbH, Gneisenaustraße 10-11, 97074 Würzburg, Germany

hereby declare that the equipment described below, by virtue of its design and construction and in the versions placed on the market by us, complies with the relevant essential health and safety requirements of the EU directives.

Product name: Hydraulic Trolley Jack 3 T

Model number: AR-HE- RWH3F

Article number: 4252023112260

Should the appliance be modified without our consent, this declaration of conformity will lose its validity.

Tested according to EU-Norm / Directives:

EN1494:2000+A1

AfPS GS 2019:01 PAK

Machinery Directive: 2006/42/EC

Date/Signature Manufacturer/Place:

Würzburg, March 5, 2024



Signature:

Dipl.-Inform. (Univ.) Korhan Canbolat, Managing Director

Representative of these instructions for use/technical data:

Dipl.-Inform. (Univ.) Korhan Canbolat, Managing Director

Office address:

Canbolat Vertriebs GmbH

Gneisenaustraße 10-11

D-97074 Würzburg

Return address can be found in the imprint: <https://www.arebos.de/impressum/>

VAT identification number: DE 263752326

Court of the Commercial Register is Würzburg, HRB 10082

WEEE Reg.-No. DE 61617071