

# AREBOS

## Drywall Sander

AR-HE-LS700CD

User's manual



Please follow all security measures in this user's manual to ensure a secure use.



Thank you for trusting in AREBOS.

Please read and save these instructions. Read through this user's manual carefully before using product. Protect yourself and others by observing all safety information, warnings and cautions. Failure to comply with instructions could result in personal injury and/ or damage to product or property. Please retain instructions for future reference.

## Safety Instructions



This product **must not** be disposed of with household waste!



By means of a CE marking, it can be recognized that a product complies with the legal requirements of European legal standards and therefore may be traded within the European Community.



**Warning!** Read the safety instructions carefully. Failure to follow the safety precautions could result in serious injury or damage. Keep the operating instructions in a safe place.



**Warning!** Wear safety glasses!



**Warning!** Wear a dust mask!



**Warning!** Wear ear protection!



This product has been tested and certified by TÜV Süd. The symbol "GS" stands for tested safety. Products marked with this symbol comply with the requirements of the German Product Safety Act (ProdSG).



Insulated housing (protection class II)!

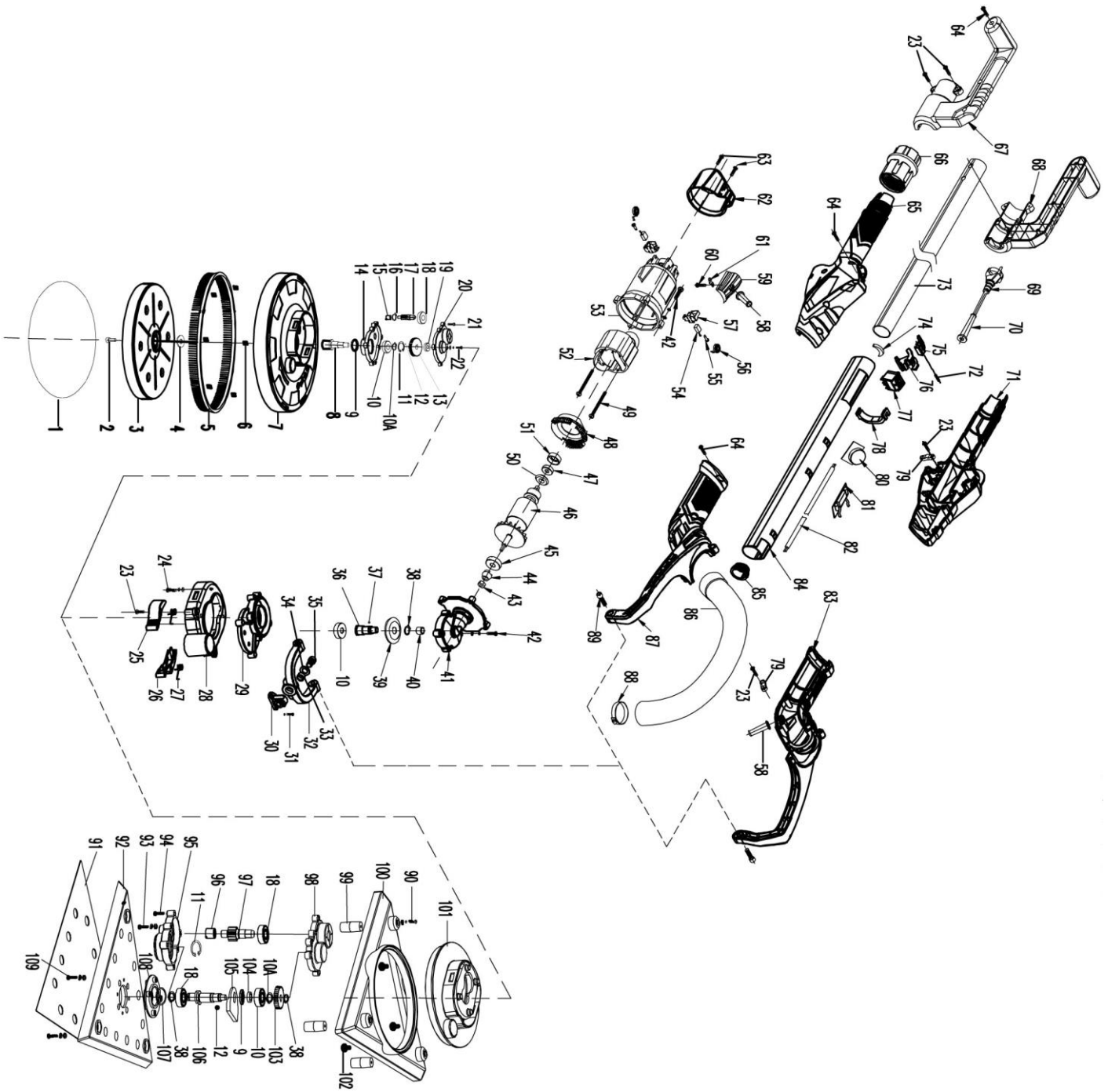
### **General Safety Guidelines**

- **Warning:** Read all of the safety guidelines and instructions. Failure to comply with the safety guidelines or instructions can result in electrical shock, fire, and/or serious injury. The term used in the Safety Guidelines “Power Tool” is referring to a mains operated power tool (corded) and a battery-operated power tool (not corded).
- **Keep these safety instructions in a safe place!**

### **SAFETY RULES FOR DRYWALL SANDER**

- USE A RESPIRATOR approved by NIOSH for “Dust and Mist”. Ventilate work area and/or use a dust collector. Continued and prolonged exposure to high concentrations of airborne dust may affect the respiratory system function.
- MAINTAIN FIRM FOOTING AND BALANCE. Use appropriate scaffolding. Do not overreach.
- SANDING OF LEAD-BASED PAINT IS NOT RECOMMENDED. Lead-based paint should only be removed by a professional.
- SANDING DRYWALL COULD LEAD TO A BUILD-UP OF STATIC ELECTRICITY IN THE TOOL. For your own safety, the drywall sander is grounded.
- The sander is connected with a dust bag and could absorb dust by its self-absorption system, without connection with a vacuum cleaner.

# Parts List



1	sandpaper	55	screw ST3X8
2	screw M6*12	56	coil spring
3	adhibit tray	57	Cover
4	wool mat	58	cable shield sheath
5	nylon brush/skirt	59	cable cover
6	spring	60	screw ST4X8
7	plastic disc	61	cable clip
8	thread axes	62	back cover
9	oil seal	63	screw ST4X14
10	bearing 6001	64	screw ST4X16
10A	circlip-internal $\phi$ 12	65	right Handle
11	circlip-external $\phi$ 28	66	locknut
12	steel ball	67	right Operating handle
13	big gear	68	left Operating handle
14	round pad box	69	cable blug
15	Needle roller bearings	70	protect cover
16	circlip-internal $\phi$ 9	71	left handle
17	Gear shaft	72	pin
18	bearing 6000	73	Telescopic tube
19	bearing 607	74	dustproof piece
20	round case cover	75	switch button
21	screw ST3.9X22	76	switch push button
22	screw M4X14	77	switch
23	screw ST4X12	78	cable clip
24	screw M4x12	79	cable clip
25	right Clamping block	80	variable speed control
26	left Clamping block	81	EMC plate
27	torsional spring	82	cable
28	link block	83	left support arm
29	gear plate	84	main tube
30	support base	85	adaptor
31	screw M5X12	86	hose
32	supporter	87	Right support arm
33	spacer	88	hose clamp
34	flat washer $\phi$ 8* $\phi$ 16*1	89	screw M6X16
35	screw M8X18	90	screw M4X12
36	spindle	91	triangle sanding paper
37	steel ball $\phi$ 2.5	92	triangle pad
38	circlip-internal $\phi$ 10	93	screw M4X18
39	Bevel Gear	94	screw ST3.9X25
40	Needle roller bearings	95	triangle box
41	gear box	96	needle bearing

42	screw M4X20	97	gear shaft
43	nut M5	98	triangle case cover
44	Bevel Gear	99	damping pillar
45	bearing 629	100	triangle outside pad
46	rotor	101	triangle inside pad
47	bearing 607	102	drilling screwST3.9X11
48	Wind loop	103	triangle big gear
49	screw ST4X50	104	bearing housing
50	insulation sheet	105	balance block
51	bearing 607	106	triangle pad out shaft
52	stator	107	O ring
53	Motor shell	108	bearing block
54	brush	109	screw M4X10

## Use





## **FOREWORD**

- The Drywall Sander is designed for sanding walls and ceilings that are made of drywall or plaster. The Sander provides a superior finish, and is faster than conventional finishing methods for both new construction and renovation work. Please clean-up the sander and dust bag timely.

## **Work Space**

- Maintain a clean and well litted workspace. Disorganized or bad lighting can lead to injury.
- Only work with power tools in non-explosion hazard areas, where no flammable liquids, gas, or dust is located. Power tools create sparks that can ignite dust or vapors.
- Keep children and other persons away, during use of the power tool. The slightest distraction can lead to a loss of control of the machine.
- The plug of the power tool must fit properly into the outlet. The plug is not allowed to be manipulated in any way. Do not use an adapter plug together with earthed power tools. Non-manipulate plugs and proper outlet connection reduce the risk of an electrical shock.
- Avoid bodily contact with earthed surfaces, such as pipes, heaters, ovens, and refrigerators.
- There is a higher risk of electrical shock when the body is earthed.
- Keep the machine away from rain or wet. The permeation of water in the power tool increases the risk of an electrical shock.
- Do not misuse the cable to carry or hang the power tool, or to pull the plug out of the outlet.
- Keep the cable away from heat, oil, sharp edges, or objects with moving parts. Damaged or tangled cables increase the risk of an electrical shock.
- When working with a power tool outdoors, use only extension cords that are designed for outdoors. The use of an extension cord designed for the outdoors reduces the risk of electrical shock.

- In the case where the use of the power tool in a damp area is unavoidable, use a residual current device to reduce the risk of an electrical shock.

### **Personal Safety**

- Make sure to pay attention to what you are doing and use caution while working with a power tool. Do not use a power tool if you are tired or under the influence of drugs, alcohol, or medication. The slightest distraction or inattention can result in serious injury.
- Wear personal protective equipment and always protective goggles. The wearing of personal protective equipment, such as a dust mask, slip-resistant footwear, protective helmet, or ear protector, depending on the form or use of the power tool, reduces the risk of injury.
- Avoid an unintentional starting. Make sure that the power tool is turned off before it is plugged into a power source and/or battery is attached, it is to be carried or picked-up. If, while carrying the power tool, your finger is on the “on” switch or the machine is plugged in while in the “on” position, this can result in serious injury or accident.
- Remove the adjustment tool or wrench, before turning on the power tool. A tool or wrench that is in a rotating machine part can cause serious injury.
- Avoid using unusual body-stance or posture. Make sure to have a secure stance and able to maintain balance. As a result, it will be easier to control the power tool in unexpected situations.
- Wear proper clothing. Do not wear wide clothing or jewellery. Keep hair, clothing, and gloves away from moving parts. Loose clothing, jewellery, or long hair, could get caught in the moving parts.
- If a dust extractor or receptor can be attached, make sure that it is attached properly and is used correctly. Use of a dust extractor can reduce the dangers of dust particles.

### **Careful handling while using Power Tools**

- Do not overload the machine. Use the correct tool for the job. Work is better and safer with the correct power tool within the power capacity range.
- Do not use a power tool with a defective power switch. A power tool that can no longer be turned on or off is dangerous and must be repaired.
- Pull the plug out of the outlet and/or remove the battery, before making adjustments to the machine 's settings, change parts, or storing the machine. These extra measures will help prevent the unexpected starting of the power tool.
- Keep unneeded power tools out of the reach of children. Do not allow the power tool to be used by a stranger or by persons who have not read this instruction manual. Power tools are dangerous, when they are used by inexperienced persons.
- Take care of your power tool. Check to make sure, if moving parts are functioning properly and not locking or jamming, if parts are broken or damaged in such a way that the mode of operation of the power tool is affected. Allow damaged parts to be repaired before using the machine. Many accidents are caused by poorly maintained power tools.
- Keep cutting edges sharp and clean. Properly maintained cutting tools with sharp cutting edges are less prone to jamming or locking and are easier to handle.
- Use the power tool, accessory parts, replacement parts and etc. in accordance with these instructions. Consider the working conditions and the task at hand. Using a power tool for a purpose other than its intended use can lead to dangerous situations.

### **Service**

- Allow the power tool to be repaired only by qualified persons and only with the original replacement parts. In order ensure that the safety of the machine is maintained.



### Warning

- While working with this tool, the dust caused can be dangerous to one's health:
- While working with a sander always wear eye protection and a dust mask.
- Do not work with material containing asbestos. Asbestos is known to cause cancer.

### Special caution while sanding material containing lead:

- All persons, that are working with the machine or entering the workspace, must wear a special mask for protection from lead colors and steam.
- Children and pregnant women are not allowed to enter the workspace.
- At the workspace, it is not allowed to eat, drink or smoke. Contact with or inhaling of the sanded dust (for ex. Lead-based coating material) can cause the user and others present damage to their health. Always wear a properly sized personal protection equipment such as a dust mask and use while sanding a dust bag.
- The power cable must be kept away from the moving parts of the machine.
- Wear protection goggles, especially while sanding above one's head.

### ABRASIVE DISC SELECTION

- The Drywall Sander is shipped with 6pcs of sanding paper (80/100/120/150/180/240grit) abrasive disc installed. This abrasive is suitable for most applications. Abrasive discs of 120 grit and 240 grit are available for situations requiring a smoother finish.

## INSTALLATION

- Before the repair or replacement parts, electric tool accessories, be sure to pull out the plug from the socket.

### Choose sandpaper

- According to the material and the grinding effect, select the appropriate sandpaper

Material	Usage	Grit
Pigment	Removal of the pigment	40
Paint		60
Filling agent	Grinding bottom pigment (such as finishing bottom)	80
Interstitial material	Brush paint, grinding residues	100
	Pigment layer drips and convex	120
	Flat bottom material for painting	180

### The replacement of sanding paper

- Before installing the new sanding paper, must first clear dirt sticking grinding wheel, such as the use of brush. Grinding surface adhesive disc has a layer of cloth, it can quickly and easily install flocking self-adhesive sandpaper. The surface grinding sandpaper pressed in the adhesive disc



- DO NOT USE THE SANDER WITHOUT A PROPER ABRASIVE PAD INSTALLED (to prevent severe damage to the work).

### **The replacement of grinding disk**

- The output shaft is inserted into the adhesive disc center with an angle wrench and turned clockwise into the hex hole. At the same time, the hands hold the adhesive disc grinding.



### **SPEED ADJUSTMENT**

- The grinding of the grinding disk rotation speed can be adjusted according to different conditions and grinding quality requirements.  
The Drywall Sander is equipped with a variable speed control. The speed is adjusted by turning the control knob. The control knob is numbered "min" through "max" with "min" being the slowest speed (approximately 1000 RPM) and "max" being the fastest speed (approximately 2100 RPM).

Use the higher speed settings for fast stock removal. Use the lower speed setting to reduce removal rate for more precise control



**ANGLE GRINDING**

- In order to do side grinding work, assemble with delta pad.



## CARBON BRUSH REPLACEMENT

- The accessories include an original set of carbon brush, when the carbon brush reaches its wear limit, replace with a new one. Use a "+" screwdriver counter-clockwise to unscrew the brush cover, remove the original carbon brush, place a new carbon brush and screw the brush cover.



## TO START AND STOP DRYWALL SANDER

- Make sure power circuit voltage is the same as shown on the specification plate on the Sander, and that the Sander switch is OFF. Connect Sander to power circuit. The Drywall Sander is equipped with a "rocker" type switch. The top end of the switch button is labeled OFF, and the bottom end of the button is labeled ON. To start the Sander: press the bottom (ON) end of the switch button, to stop the Sander press the top (OFF) end of the switch button.

## SANDING DRYWALL

- The Drywall Sander has a unique articulating sanding head allowing the abrasive pad to conform to the work surface.
- This enables the operator to sand the top, middle and bottom of a wall or ceiling joint.
- When sanding the tall wall, and ceiling, please use a ladder for help.
- The sanding pad can adjust to the height by itself when it meets an uneven wall.
- 1. **CAUTION:** Wear a respirator approved for "Dust and Mist".
- 2. Turn Drywall Sander switch ON.
- 3. Position Drywall Sander lightly against work surface (apply just enough pressure to align the sanding head with the work surface).
- 4. Apply additional pressure to engage the abrasive pad to the work surface: while moving the Sander in an overlapping pattern to smooth the drywall compound down to a "featheredge". Apply ONLY enough pressure to keep the abrasive pad flat against the work. Excessive pressure can cause unacceptable swirl marks and unevenness in the work surface. Keep the Sander in constant motion while abrasive pad is in contact with the work surface. Use a steady, sweeping motion. Stopping the Sander (on the work), or moving the Sander erratically can cause unacceptable swirl marks and unevenness in the work surface.
- **NOTE:** Do not allow rotating abrasive pad to contact sharp protrusions. Contact with protruding objects (nails, screws, electrical boxes, etc.) can severely damage the abrasive pad.

## Cleaning and Maintenance

- Keep tools clean, clean up debris and dust.
- Often add in lubricating oil and grease (reducer, bearing) to keep the tool flexible in operation.
- Always check the power cable, plug, switch, so that the tool is in good condition.
- Power tools produced by this company have strict quality inspections. If still failure occurs, please let the machine be repaired and contact the customer service department.

## Technical Specifications

Power	710/750W
Voltage supply	220-240V/110V
Frequency	50/60Hz
Speed	1000-2100 r/min
Disc Diameter	8.86 in (225 mm)
Protection class	II
Degree of protection	IP20
Weight	9 lbs (4.1 kg)

## Disposal Instruction

### Disposal of the packaging

- Please make reference to the guidelines and standards for appropriate disposal of the packaging valid in your region. In part, the package may consist of plastic bags - watch this respect, with special care to ensure that this is not out of the reach of children. There is a risk of suffocation!

### Disposal of waste equipment

- Equipment must be disposed of in accordance with the rules and regulations of the local waste disposal.

### Meaning of the “dustbin”



Protect our environment; electrical appliances do not belong in household waste. Use the provided for the disposal of electrical equipment collection points and enter your electrical and electronic equipment that you no longer use. They help ensure that the potential effects of incorrect disposal on the environment and human health to be avoided. So do your part to recycle, recycling and other forms of recovery of waste electrical and electronic equipment. Information on where the devices are disposed of, please contact your local authorities or local Governments.

**Our customer service number: +49 (0) 931-45232700**

## EU Declaration of Conformity

We,

Canbolat Vertriebs GmbH, Gneisenaustraße 10 – 11, 97074 Würzburg, Germany,

Hereby declare that the product named below, seen its design and construction as well as according to our sales, has been complied with the relevant and basic health and safety EU-requirements.

Name of the product: AREBOS Drywall Sander

Model Nr.: AR-HE-LS700CD

Art. Nr.: 4260551581496

.

Applicable EC Directives: **2006/42/EC**

EC Directive of Electromagnetic Compatibility **2004/108//EC**

Applicable Harmonized Standards:

EN 60745-1:2009/A11:2010

EN 55014-2/A2:2008

EN 60745-2-4 : 2009/A11:2011

EN 61000-3-2:2014

EN 60745-2-3 : 2011/A13:2015

EN 61000-3-3:2013

EN 55014-1/A2:2011

If the product has any modification not allowed by us, this declaration loses its validity

Date/Manufacturer Signature/Location:

Würzburg, 24.08.2018



Identification of the signatory:

Korhan Canbolat, head of the company

Authorised representative for the technical documentation:

Korhan Canbolat

**Office address:**

Canbolat Vertriebs GmbH

Gneisenaustraße 10 – 11

D-97074 Würzburg

Return address can be found in the imprint: <https://www.arebos.de/impressum/>

VAT identification number: DE 263752326

Court of the Commercial Register is Würzburg, HRB 10082

WEEE Reg.-No. DE 61617071