

# AREBOS

## 0.5 T Engine Support

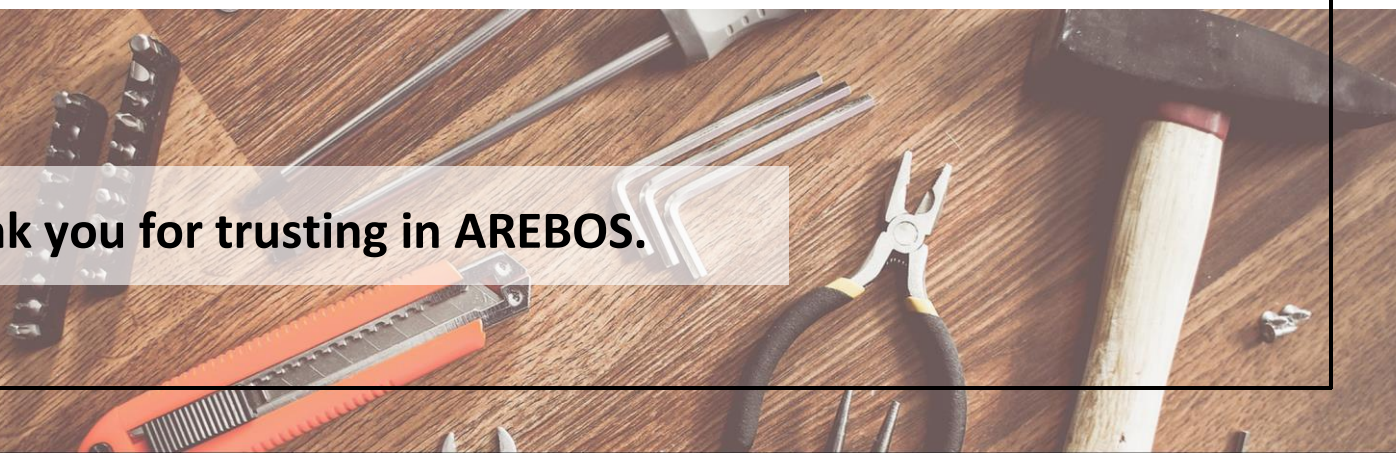
AR-HE-MB500



Please follow all security measures in this user's manual to ensure a secure use.



Thank you for trusting in AREBOS.



# List of contents

<b>1. Safety instructions</b> .....	<b>3</b>
1.1 Explanation of the symbols .....	3
1.2 General safety instructions .....	3
<b>2. Assembly</b> .....	<b>4</b>
<b>3. Technical specifications</b> .....	<b>4</b>
<b>4. Maintenance</b> .....	<b>5</b>
<b>5. Disposal instruction</b> .....	<b>5</b>
5.1 Disposal of the packaging.....	5
5.2 Disposal of waste equipment.....	5

Please read and save these instructions. Read through this user's manual carefully before using this product. Protect yourself and others by observing all safety information, warnings and cautions. Failure to comply with instructions could result in personal injury and/or damage to product or property. Please retain instructions for future reference.

# 1. Safety instructions

## 1.1 Explanation of the symbols



By means of a CE marking, it can be recognized that a product complies with the legal provisions of European legal norms and therefore may be traded within the European Community.



**Warning!** Read the safety instructions carefully. The Failure to follow the safety precautions could result in serious injury or damage. Keep the operating instructions in a safe place.



Be careful when using the article!



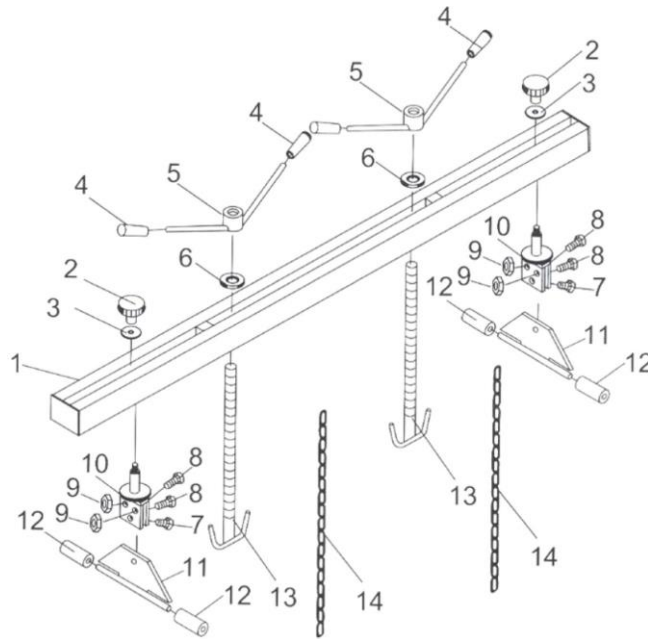
**Warning!** Danger of crushing hands!

## 1.2 General safety instructions

- Unqualified persons may not use the motor bridge.
- Use the engine support for its intended purpose, only for lifting vehicle engines. Never use it to transport loads!
- Make sure that the vehicle structure is suitable for using the article. The surface of the vehicle structure must be level in order to prevent the motor bridge from slipping off.
- Identify the most stable area of the vehicle structure to set up the engine support. Do not place the supports (11) with the rubber protective caps (12) on the mudguards (paint damage possible), but on the inside of the bulkhead (upper mudguard attachment) or on the shock absorber mount.
- Make sure that the vehicle can not roll when using the engine support.
- Do not use the engine bridge if there is a risk of leakage of gasoline or other hazardous substances.
- After properly assembling the engine support, first tighten the bolts (7) and the locking knurled screws (2) to stabilize the bridge.
- Never work under a raised engine!
- Do not exceed the permissible load capacity of the engine support.
- Attach the motor to be lifted by wrapping the load chains (14) around the motor and hang the chains on the load hooks. To lift the engine, turn the hand lever nuts (5).

- Clean and lubricate the threads on all parts from time to time.
- Store the engine support in a dry and moisture protected location.
- Modifications to the engine support are not permitted. We accept no liability for damage caused by improper use of the engine support
- Do not use the engine support if parts are bent or damaged.

## 2. Assembly



1. Engine support
2. Parking thumbscrew
3. Washer
4. Grip sleeve
5. Lever nut
6. Washer
7. Bolt M12x25
8. Bolt M10x35
9. Hex nut M10 / M12
10. Slot carrier
11. Variable fender support
12. Protective rubber
13. Load hook M20 x 2.5 (330 mm)
14. load chain

## 3. Technical specifications

Load Capacity	1102 lbs (500 kg)
Bar Length	59.06 in (150 cm)
Chain Length	31.5 in (80 cm)
Weight	48.5 lbs (22 kg)

## 4. Maintenance

- **BEFORE EACH USE**, inspect the general condition of the tool, check for loose screws, misalignment or binding of moving parts, cracked or broken parts and any other condition that may affect its safe operation
- **AFTER USE**, clean external surfaces of the tool with clean, moist cloth.

## 5. Disposal instruction

### 5.1 Disposal of the packaging

- Please make reference to the guidelines and standards for appropriate disposal of the packaging valid in your region. In part, the package may consist of plastic bags - watch this respect, with special care to ensure that this is not out of the reach of children. There is a risk of suffocation!

### 5.2 Disposal of waste equipment

- Equipment must be disposed of in accordance with the rules and regulations of the local waste disposal.
- At the end of the long life of your item, please dispose of the valuable raw materials for proper disposal so that proper recycling can take place. If you are not sure how to proceed, the local waste disposal companies or recycling centers are happy to help.

**Our customer service number: +49 (0) 931-45232700**

## EU Declaration of Conformity

We,

Canbolat Vertriebs GmbH, Gneisenaustraße 10-11, 97074 Würzburg, Germany,

Hereby declare that the product named below, seen its design and construction as well as according to our sales, has been complied with the relevant and basic health and safety EU-requirements.

Name of the product: AREBOS 0.5 T Engine Support

Model Nr.: AR-HE-MB500

Art. Nr.: 4260199758168

If the product has any modification not allowed by us, this declaration loses its validity.

Tested acc. to.

QA-AC-4657/20

QA TECHNIC - ATTESTATION OF CONFORMITY

2006/42/EC

EN ISO 12100: 2010, EN13155:2003+A2:2009

Date/Manufacturer Signature/Location:

Würzburg, 27.02.2023



Identification of the signatory:

Korhan Canbolat, head of the company

Authorised representative for the technical documentation:

Korhan Canbolat

**Office address:**

Canbolat Vertriebs GmbH

Gneisenaustraße 10-11

D-97074 Würzburg

Return address can be found in the imprint: <https://www.arebos.de/impressum/>

VAT identification number: DE 263752326

Court of the Commercial Register is Würzburg, HRB 10082

WEEE Reg.-No. DE 61617071