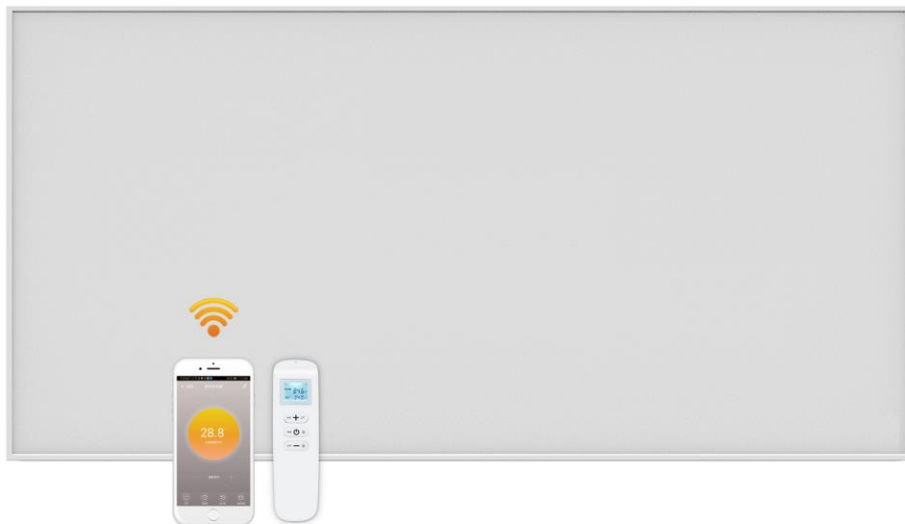


AREBOS

Panel heater 700W



Please follow all security measures in this user's manual to ensure a secure use.



Thank you for trusting in AREBOS.









List of contents

1. Safety instructions.....	3
1.1 Symbols	3
1.2 General safety instructions	4
2. Technical data	6
3. Installation	7
3.1 Device Structure	7
3.2 Scope of Delivery	7
3.3 Installation Manual	7
3.4 Installation of stands (optional)	9
4. Use of Built-in Wifi and Remote Thermostat.....	9
4.1. Device Description	9
4.2 Technical Data of Internal Receiver	10
4.3. Technical Data of remote-control.....	10
4.4. Function of remote-controller.....	10
4.5. Instructions of remote-controller operation.....	11
4.6. Instruction of WIFI Connection	12
4.7. Operation Instructions	14
4.8. Important note	15
5. Cleaning and maintenance	15
5.1 Troubleshooting.....	15
5.2 Maintenance and Storage	15
6. Environmentally friendly disposal.....	17
6.1 Disposal and packaging	17
6.2 Disposal of waste equipment.....	17
EU Declaration of Conformity.....	18

Please read and save these instructions. Read through this user's manual carefully before using product. Protect yourself and others by observing all safety information, warnings and cautions. Failure to comply with instructions could result in personal injury and/or damage to product or property. Please retain instructions for future reference.

1. Safety instructions

1.1 Symbols

Symbols	Meaning
	This symbol located on the device indicates that it is prohibited to place objects (such as towels, clothes etc.) above or directly in front of the device. In order to avoid overheating and fire hazards, the device must not be covered.
	WARNING! from electrical voltage! Remove the power plug from the power outlet before working on the device! Do not touch the power plug with damp or wet hands. Unplug the power cord from the power outlet by touching it on the power plug.
	This symbol located on the device indicates that it is prohibited to spray the device.
	This symbol located on the device and information marked indicates that operating manual must be observed.
	By means of a CE marking, it can be recognized that a product complies with the legal requirements of European legal standards and therefore may be traded within the European Community.
	This product must not be disposed of with household waste!
	Ceiling mounting is forbidden! WARNING! This device can pose dangers if it is used improperly or not as intended by persons who have not been instructed! Note that the device is not a toy and does not belong in children's hands. Personnel qualifications! Suffocation! Do not leave the packaging material carelessly. It could become a dangerous toy for children. There is a risk of fire if installed improperly. Do not place the device on a flammable surface. Do not place the device on high-pile carpets. The device must not be covered to avoid overheating and fire hazard!
	WARNING! Hot surface! This symbol indicates that there are dangers to the life and health of individuals due to hot surfaces. Parts of this device can get very hot and cause burns. Pay special attention when children or other vulnerable people are present!



WARNING! from electrical voltage!

This symbol indicates that there are dangers to the life and health of persons due to electrical voltage.

Work on electrical components may only be carried out by an authorized specialist company!

WARNING! Danger of electric shock!

The device must not come into contact with water, otherwise there is a risk of electric shock!

Do not use this heater in wet rooms!

1.2 General safety instructions

Read this manual carefully before starting or using the device. Always store the manual in the immediate vicinity of the device or its site of use!

Read all safety warnings and all instructions.

Failure to follow the warnings and instructions may result in electric shock, fire and / or serious injury. Save all warnings and instructions for future reference.



WARNING!

Ceiling mounting is NOT allowed! This device is suitable for wall mounting!



WARNING!

This appliance can be used by children aged from 8 years and above and persons with reduced physical, sensory or mental capabilities or lack of experience and knowledge if they have been given supervision or instruction concerning use of the appliance in a safe way and understand the hazards involved. Children shall not play with the appliance. Cleaning and user maintenance shall not be made by children without supervision.



WARNING!

Children of less than 3 years should be kept away unless continuously supervised.

Children aged from 3 years and less than 8 years shall only switch on/off the appliance provided that it has been placed or installed in its intended normal operating position and they have been given supervision or instruction concerning use of the appliance in a safe way and understand the hazards involved.

Children aged from 3 years and less than 8 years shall not plug in, regulate and clean the appliance or perform user maintenance.



WARNING!

Do not use the device in small rooms if persons are present who cannot leave the room independently and who are not under constant supervision.



WARNING!

Some parts of this product can become very hot and cause burns. Particular attention has to be given where children and vulnerable people are present. It's dangerous of installation close to curtains and other combustible materials. To avoid the possibility of burns, the following people should be much more careful when using the heaters: infants and kids, people with sensitive skin, the old, the sick, people who is drunk, people who takes sleeping pills.

- Remove all the protective films (both on the front and on the back) before using.
- Be sure the input voltage is between 220-240V, 50Hz, and power supply has been strictly in accordance with IEC and well grounded.
- Do not use the device in potentially explosive rooms.
- Do not use the device in aggressive atmosphere.
- Set the device up in an upright and stable position.
- Let the device dry out after a wet clean. Do not operate it when wet.
- Do not use the device with wet or damp hands.
- Do not expose the device to directly spraying water.
- Never insert any objects or limbs into the device.
- Do not cover or transport the device during operation.
- Do not sit on the device.
- This appliance is not a toy! Keep away from children and animals. Do not leave the device unattended during operation.
- Check accessories and connection parts for possible damage prior to every use of the device. Do not use any defective devices or device parts.
- Ensure that all electric cables outside of the device are protected from damage (e.g. caused by animals). Never use the device if electric cables or the power connection are damaged!
- The electrical connection must correspond to the specifications in chapter technical data.
- Insert the mains plug into a properly secured mains socket.
- Do not use the device when the socket or wire overloaded.
- Observe the device's power input, cable length and intended use when selecting extensions to the power cable. Completely unroll extension cables. Avoid electrical overload.
- Before carrying out maintenance, care or repair work on the device, remove the mains plug from the mains socket. Hold onto the mains plug while doing so.
- Switch the device off and disconnect the power cable from the mains socket when the device is not in use.
- Do not under any circumstances use the device if you detect damages on the mains plug or power cable. If the supply cord is damaged, it must be replaced by the manufacturer, its service agent or similarly qualified persons in order to avoid a hazard. Defective power cables

pose a serious health risk.

- During the installation of the device observe the minimum distances from walls and other objects as well as the storage and operating conditions specified in the technical data chapter.
- Never drill into the heating device.
- Keep it away from flammable products, or else it may cause fire.
- Do not place the device against flammable or melting objects, like wood, straw, curtains, plastics, etc.
- Do not place the device on combustible ground.
- Do not transport the device during operation.
- Do not touch the surface during the device is working to avoid burns.
- Allow the device to cool down before transporting and / or maintenance work.
- Do not use this device near bathtubs, shower trays, swimming pools or other water containers. Risk of electric shock!
- The device must be placed where the switches and controllers cannot be touched by a person in a bathtub or shower.
- The device is only suitable for well insulated spaces or occasional use. Only use the device for heating surfaces indoors.
- The device is suitable for wall mounting. Safe distance: 30cm from the front; 10cm from the right and left sides.

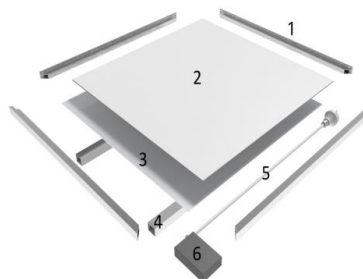
2. Technical data

Model	AR-HE-IH700WT
Option	Built-in Wifi and with Remote control
Power input	700 W
Power supply	230 V/50 Hz
Connection type	CEE7/7
Surface temperature	70-90° C
Material Frame	Aluminium
Surface material	IR ceramic coating
Cable length	1.9 m
Thickness	0.87 in (22 mm)
Overheating protection	Yes
Degree of protection	IP54
Efficiency	98%
Overheating protection	YES
Weight	7.4KG
Dimensions	120.5*60.5*2.2cm
Min. distance	
top :	50 cm
rear:	0 cm
sides:	10 cm
front:	30 cm

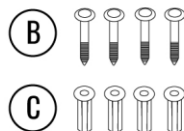
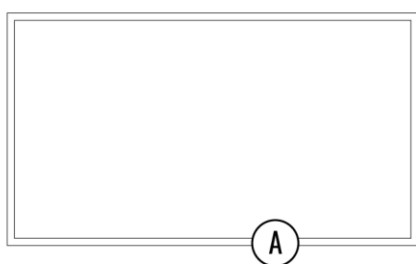
3. Installation

3.1 Device Structure

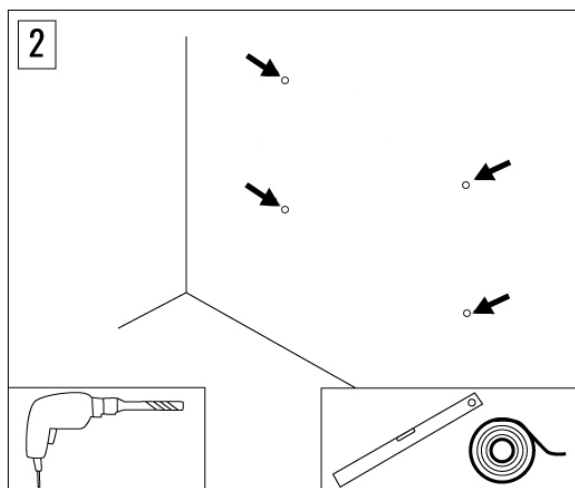
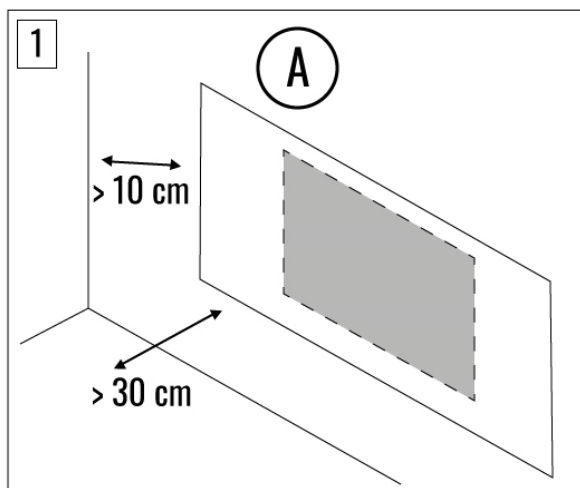
- 1 Frame
- 2 Heating element
- 3 rear metal sheet
- 4 Wall attachment
- 5 Power cord
- 6 Junction box

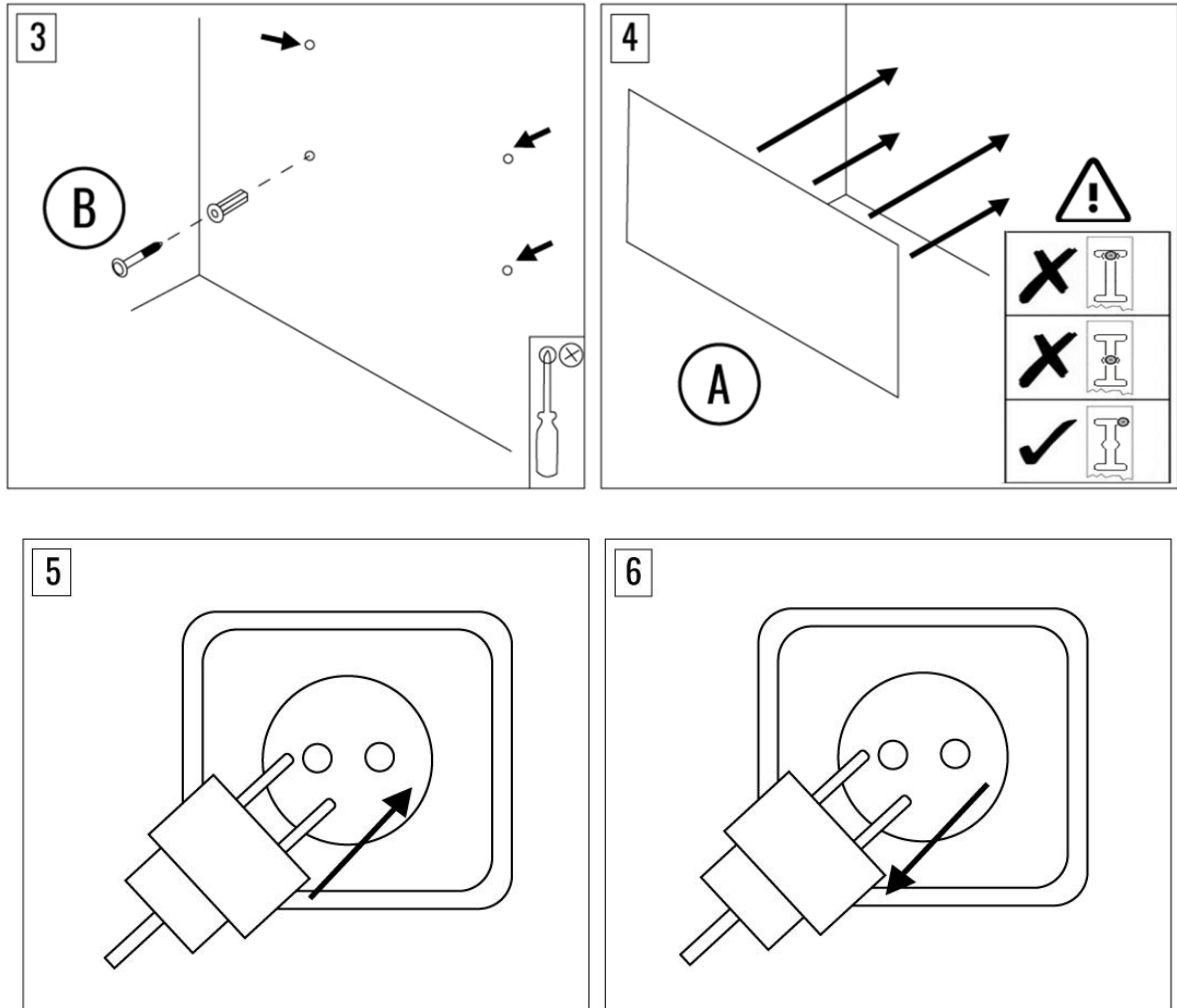


3.2 Scope of Delivery



3.3 Installation Manual





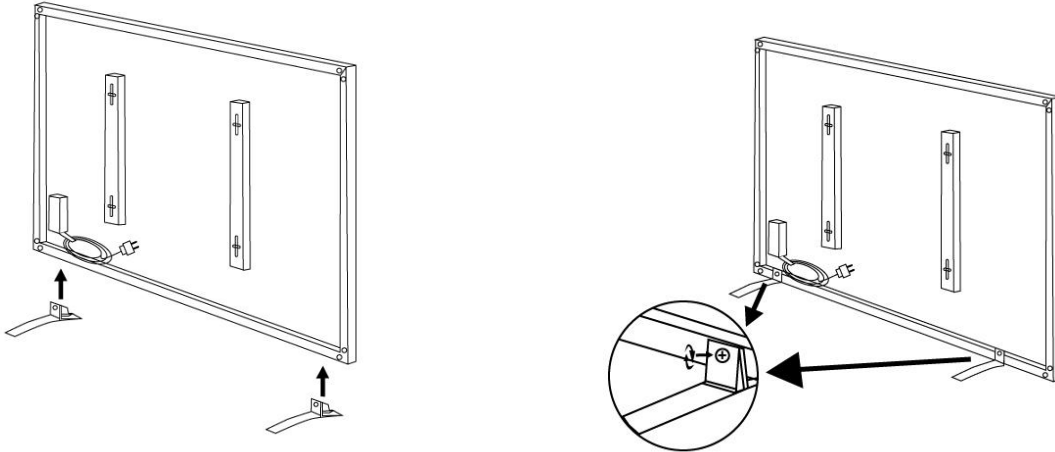
1. Choose the mounting position, keep the required minimum distances. (Pic 1)

Distances required for device mounting			
front	Minimum 30cm	right	Minimum 10cm
left	Minimum 10cm	top	Minimum 50cm

2. Drill the holes for the infrared heater. (Fig. 2)
3. Insert the dowels (B). (Pic 3)
Place the screws (B) in the dowels.
Tighten the screws.
The screws should project by approx. 0.197 in (0.5 cm).
4. Hang up the infrared heating plate (A). (Pic 4)
5. Insert the plug in the socket. (Pic 5)
6. Pull out the plug from the socket when not in use. (Pic 6)

3.4 Installation of stands (optional)

- The stand is NOT in delivery with the heater. It can be purchased separately from our online shop.
- The stands can be mounted in order to be able to place the device anywhere in the room. The accessories for the stands are not included in the scope of delivery.



- Please note the recommended minimum distances to walls and objects.

Proceed as follows to mount the stands:

Get a second person to help you lift the product while mounting the stands.

1. Place stands on the ground.
2. Lift the device with the help of an additional person.
3. Place the device onto the stands.
4. The second person continues to hold the device.
5. Screw the stands onto the device.
6. Check if the device stands straight and stable.

4. Use of Built-in Wifi and Remote Thermostat

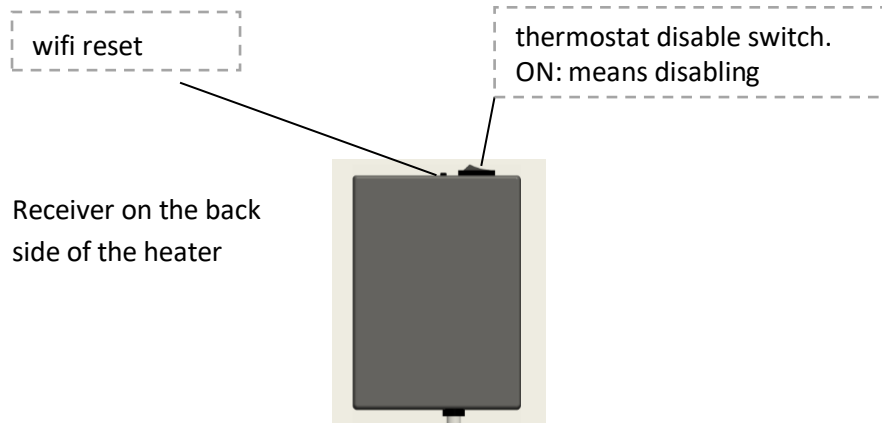
4.1. Device Description

Internal WIFI thermostat are normally built in, controlled by mobile phone through internet, function includes:

- WIFI remote control
- remote control
- temperature adjustment
- weekly programmed on/off and temperature setting
- count down power off
- group control
- share to other users

It works with a remote-controller which acquires room temperature and transmit signal to the heater receiver. This remote-controller has a LCD screen which can display current and past 24 hours room temperature and humidity.

4.2 Technical Data of Internal Receiver



- 1) Power Supply: AC220-240V
- 2) Wireless standard: IEEE802.11b/g/n
- 3) Frequency range: 2.412~2.484GHz
- 4) Security mechanism: WEP/WPA-PSK/WPA2-PSK
- 5) Encryption type: WEP/TKIP/AES
- 6) Standby power consumption: <0.8W
- 7) Working environment: temperature -5 ~ 50 ° C; humidity 10% -95%.

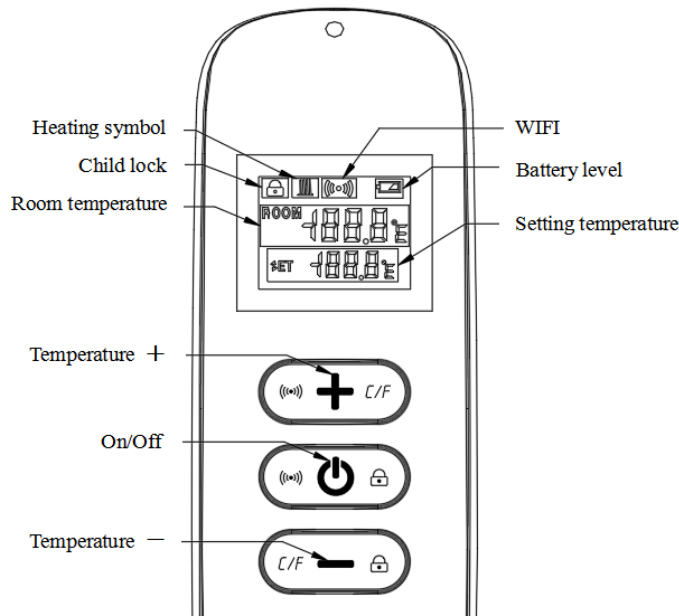
4.3. Technical Data of remote-control

- 1) Power supply: DC3V (2*1.5V AAA batteries, not included)
- 2) Power consumption: 3V 0.1mA
- 3) Temperature setting range:0°C~45°C
- 4) Temperature display range: 0°C~50°C
- 5) Maximum work distance: <8 meters
- 6) Dimension: 140mm×40mm×18mm
- 7) Weight: 40g

4.4. Function of remote-controller

- 1) Built in receiver and remote-controller constitute the temperature control system;
- 2) The remote-controller is powered by **2pcs of 1.5V AAA battery**. Please change with new batteries if the battery symbol gets flashing, or else the remote will not be able to control the heaters.
- 3) The remote-controller acquires the room temperature through the sensor on the top, and send real-time temperature data to the receiver.
- 4) The screen can display the room temperature, setting temperature, child lock, battery level etc.
- 5) The remote-controller has the functions of switching heater on/off, setting temperature, temperature conversion, child lock etc.
- 6) When the screen of the remote-controller is off, it means that the heater is off, and it does not mean that the remote-controller has stopped working. It is still detecting real-time temperature data and sending the real-time temperature data to the receiver every 60s for logical control (the remote-controller will send the collected temperature data whether it is on or off).
- 7) One remote-controller can be paired with several heaters, users can pair them one by one or at same time together, both ways are workable.

4.5. Instructions of remote-controller operation




Remote-controller

- 1) Power on the heater, and then press " ⏻ " and "+" at the same time within one minute to start pairing, the WIFI symbol flashes three times and sends out the pairing code to indicate that pairing is taking place, there will be **one beep sound from heater** after success.

Note:1. Please turn off the heaters that you do not want to be paired before pairing.

2. If the remote control needs to be replaced, please power on the heater again, and then complete the pairing within five minute. If the pairing is not finished within five minutes, the pairing mode will be off and you will need to repeat the above steps to pair again.

- 2) Press " ⏻ " to turn on the heater, and press again to turn off the heater.
- 3) Press the "+" key to increase the set temperature by 1°C, press the "-" key to decrease the set temperature by 1°C, and hold the "+" key or the "-" key for 3 seconds to increase or decrease the set temperature continuously.
- 4) Press the "+" and "-" key at the same time to switch the temperature unit between °C and °F.
- 5) Press the " ⏻ " key and the "-" key at the same time for 3 seconds to open the child lock mode, do so again to close.
- 6) SET means the target temperature.This is heating symbol.
- 7) If the SET temperature is lower than the ROOM temperature, the heating symbol is not displayed. 
- 8) If the SET temperature is higher than the ROOM temperature, the heating symbol is displayed.
- 9) When the room is heated to the SET temperature, then the remote control will stop displaying the heating symbol.
- 10) Every time you press the button, the screen background will light up, and it will be off if no operation within 5 seconds.

4.6. Instruction of WIFI Connection

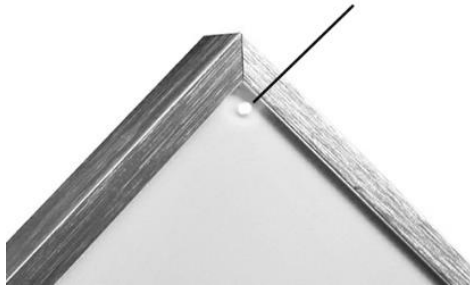
- 1) Before pairing, please make sure your mobile phone connects to your 2.4ghz WIFI signal invariably.
- 2) Scan and install below Smart Life APP, and Register an account.



- 3) **Long press Wi-Fi reset button 5-10s or repeat powering on/off the heater 4 times by plug until the front corner red indicator light blinks.**

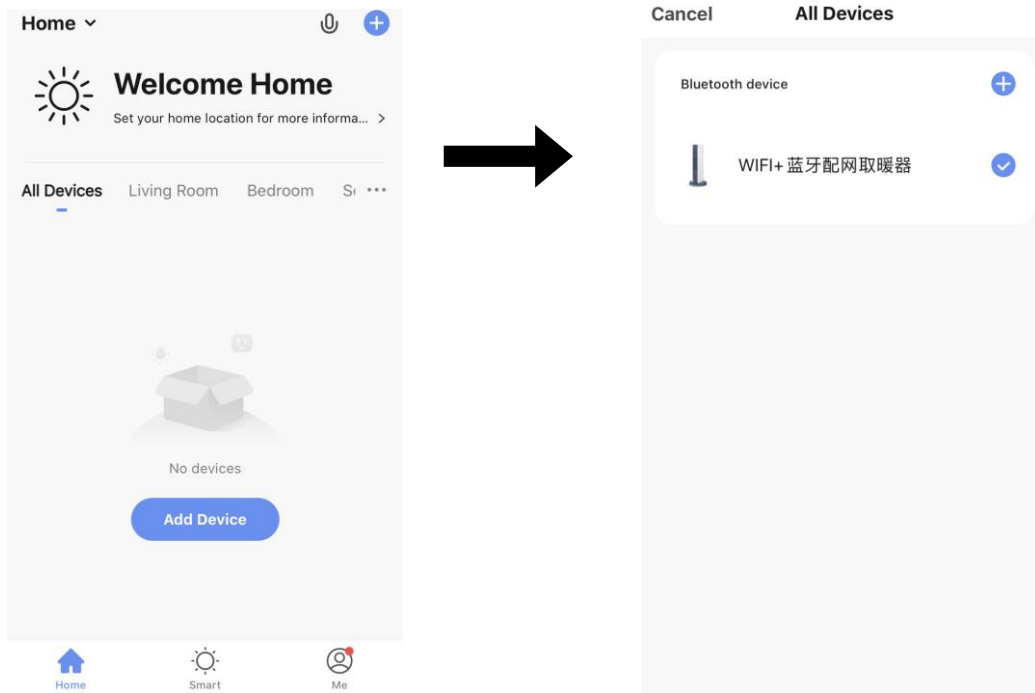
Note: Same operation is necessary when WIFI hotspot changed, WIFI password changed, or cell phone changed.

corner (or at the rear electric box)indicator light
with red and blue colors

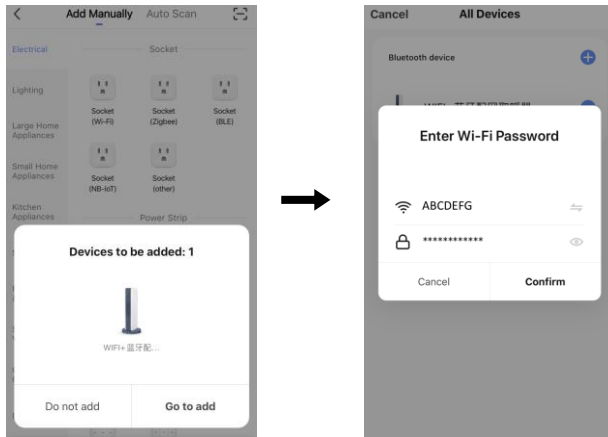


**Red color means online
Blue color means heater
powering on**

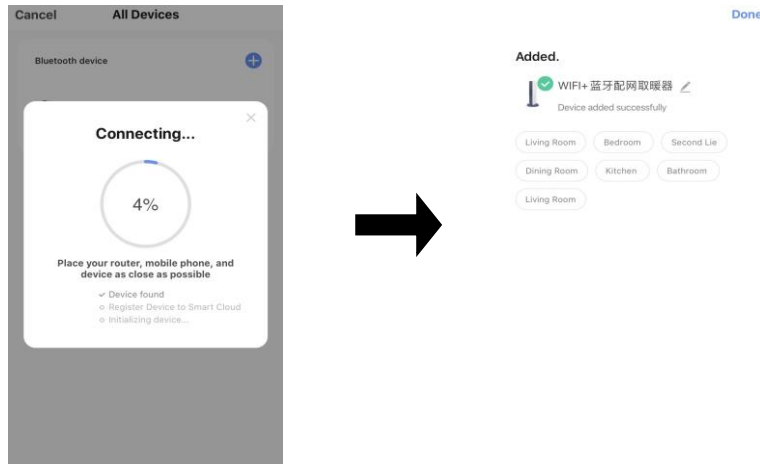
- 4) Click Smart Life App to enter main interface, select room type and click “Add Device” or the upper right corner “+” icon. A pop-up window appears as below picture.



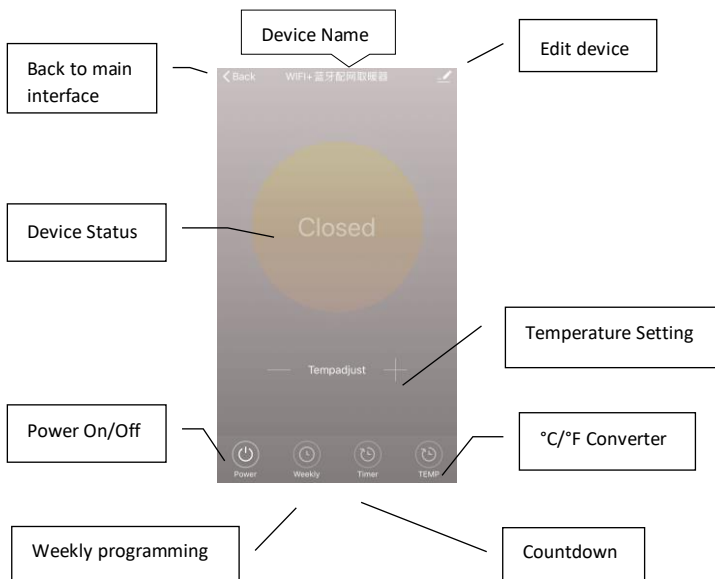
- 5) Click “Go to add”. In next page click “+” to add a bluetooth device, and a Enter Wi-Fi Password dialog will pop-up as following.



- 6) Enter Wi-Fi password, click “Confirm” , It will automatically enter the next step for WIFI connection. The device will be added successfully after waiting for 20-30 seconds. And meantime the red indicator at the front corner of heater lights up. You can name this device, e.g. “Infrared panel heater”.









Note: If the connection is timed out in Step 6, please Repeat Step 3-6



4.7. Operation Instructions

Main view of the Smart Life APP after heater connected successfully as below.



	<p>turn on/off the power supply of the heater, blue indicator on heater panel lighting up means the heater has been powered on.</p>
	<p>Click device name “infrared panel heater” to enter the interface of the device.</p>
	<p>means turning on/off the power supply of the heater, setting temperature should be also at least 0.5 °C higher than room temperature if you want the heater to be powered on.</p>
	<p>means weekly programming mode. Under weekly mode, users can program the heater to change the operation and desired temperature throughout the week. ON and OFF timing is separate, you need to add individually. Don't forget to turn ON the weekly button to Green after programming. Note: weekly will still work as per setting even under APP powering off state.</p>
	<p>Means the timer is countdown function for setting to power off the heater. Note: APP powering off will cause timer setting canceled.</p>
	<p>means convert temperature display between °F and °C</p>
	<p>means other editing of the heater, description as below.</p> <ol style="list-style-type: none"> 1) Device name: edit the thermostat name. 2) Device information: to check the virtual ID etc device information. 3) Share device: you can share the control of this thermostat to other mobile numbers/email addresses if they have been registered in “Smart Life” APP. 4) Create Group: you can group different thermostats to control together. 5) FAQ & Feedback: to report any problems to the APP supplier. 6) Add to the home interface: you can turn on the heater directly on the home interface. 7) Check Device network: check the wifi connection status of device. 8) Check Update: Get latest firmware version. 9) Remove Device: remove thermostat from your APP.

4.8. Important note

- The heater only support 2.4GHz network.
- Red light means the heater is online, blue light means the heater is powering on.
- If long press wifi reset button 5-10s or repeat powering on/off the heater 4 times by plug, internal WiFi connecting information will be cleared, you need to pair WIFI again.
- Thermostat disable switch on means disabling thermostat.
- WiFi or network disconnected will cause heater offline and heater powering off.
- The blue LED indicator may not light up at the first time when you finished the WIFI connecting, you need to wait for a couple of seconds due to network searching and connecting.
- Alkaline battery is recommended for the remote control. Please remove the battery if long time no use.
- If the remote cannot turn on the heater, please check if the setting temperature is not high above the room temperature.
- Put the remote-controller at most 8 meters from the heater.
- Do not mount the remote-controller close to any cold or heat source;
- Do not cover the remote-controller;
- Do put it in an open normal room environment rather not inside a drawer/pocket etc, or under pillow/quilt etc.
- Do not use heaters in wet or running water environment.
- Please pull out the heater power supply from your socket if long time no use.
- Both the remote-controller and App can turn on/off the heater and set the temperature. The remote-controller setting can be linked to the App, but the App setting cannot be linked to the remote-controller.

5. Cleaning and maintenance

5.1 Troubleshooting

Problem	Reason	Measure
It has noise when original charged with electricity	Due to the structure stress of the heat insulator.	It is a normal phenomenon. Don't worry about it.
The surface of the panel was slightly raised.	Due to the thermal expansion of the surface material.	It is a normal phenomenon. Don't worry about it.
The surface of the heating panel is slightly warm.	1. The voltage is low. 2. In a low-temperature environment.	1. Install a voltage regulator. 2. It is normal.


5.2 Maintenance and Storage

- Always disconnect the appliance from the main supply before cleaning.
- Never immerse the device in water!
- Clean the device with a soft, damp and lint-free cloth. Ensure that no moisture enters the housing. Protect electrical components from moisture. Do not use any aggressive cleaning

agents such as cleaning sprays, solvents, alcohol-based or abrasive cleaners to dampen the cloth. Wipe the housing dry after cleaning.

- Before storing the device, proceed as follows:
 - Hold onto the mains plug while pulling the power cable out of the mains socket.
 - Allow the device to cool down sufficiently. When the device is not being used, observe the following storage conditions:
 - Store the device in a dry location and protected from frost and heat.
 - Store the device in an upright position where it is protected from dust and direct sunlight.
 - If required, use a cover to protect the device from invasive dust.
 - Place no further devices or objects on top of the device to prevent it from being damaged.

6. Environmentally friendly disposal

 **Warning! from the risk of suffocation!** Packaging material is dangerous for children. Never let children play with packaging material.

6.1 Disposal and packaging

- The packaging of your device is made of materials necessary to guarantee effective protection during transport. These materials are fully recyclable and thus reduce the environmental impact. Dispose of the packaging in a bin for recyclable materials.

6.2 Disposal of waste equipment

- Waste equipment must be disposed of in accordance with the guidelines and regulations of local waste disposal. Contact your local administration via the address of the nearest recycling centre and deliver your device there.



The symbol of the crossed-out waste bin on an OLD electrical or electronic equipment states that it must not be disposed of in household waste at the end of its service life. Collection points for WASTE electrical and electronic equipment are available in your area for free returns. You can obtain the addresses from your city or local government. You can inform yourself on our website www.arebos.de about other return options created by us.



The separate collection of WEEE is intended to prevent reuse, recycling or other forms of recovery of WEEE, as well as the negative consequences of disposal on the environment and human health.

Note on battery disposal

The symbol of the crossed-out trash can on batteries or accumulators states that they must not be disposed of in household waste at the end of their service life. If batteries or accumulators contain mercury (Hg), cadmium (Cd) or lead (Pb), you will find the respective chemical symbol below the symbol of the crossed-out trash can. You are legally obliged to return old batteries and accumulators after use. You can do this free of charge at the retail store or at another collection point in your area. Addresses of suitable collection points can be obtained from your city or local government.

Our customer service number: Tel. +44 (0) 208 068 5604

fax: +49 (0) 931 4523 2799 / e-mail: info@arebos.de

Office address: Canbolat Vertriebs GmbH • Gneisenaustraße 10-11 • 97074 Würzburg

Return address can be found in the imprint: <https://www.arebos.de/impressum/>

Sales tax identification number: DE 263752326

Court of commercial registration is Würzburg, HRB 10082

WEEE-Reg. No. DE 61617071

EU Declaration of Conformity



We, the

Canbolat Vertriebsgesellschaft mbH
Gneisenaustrasse 10-11
97074 Würzburg, Germany

declare, under sole responsibility, that the following product:

Brand

AREBOS

Product

Panel Heater 700W

Product Model
Article

AR-HE-IH700WT
4252023108126

has been developed, designed and
manufactured in accordance with
the requirements of **European
directives:**

2014/30/EU
2014/35/EU
2011/65/EU; 2015/863/EU
2009/125/EC

The subject matter of the declaration described above is in accordance with the relevant harmonisation legislation of the European Union.

The assessment shall be based on
the following **harmonised
standards** applied:

EN 60335-1:2012+A11+A13+A1+A14+A2
EN 60335-2-30:2009+A11+A1+A12
EN 62233:2008
EN IEC 55014-1:2021
EN IEC 55014-2:2021
EN IEC 61000-3-2:2019/A1:2021
EN IEC 61000-3-2:2019
EN 60675:1995+A1:1998+A2:2018+A11:2019
EN 50564:2011

Other applied technical standards
and specifications:

Regulation (EU) 2016/2282

Place and date of issue:

Würzburg, 2022-08-03

Signature:

Dipl.-Inform. (Univ.) Korhan Canbolat, Managing Director

If the device is modified without our consent, this declaration of conformity loses its validity.