

# FableKids

love inspired.



**Child Car Seat**

LUNA



ECE R129/03  
V.042024

**Thank you for choosing Fable Kids.**

Please read the instructions carefully before use and keep for future reference.



## Table of Contents

<a href="#">1. Product Overview</a>	1
<a href="#">2. Important Safety Information</a>	3
<a href="#">3. How to Use the Product</a>	5
<a href="#">4. Installation</a>	9
<a href="#">5. Care instruction</a>	13
<a href="#">6. Environmentally Friendly Disposal</a>	14





# FableKids

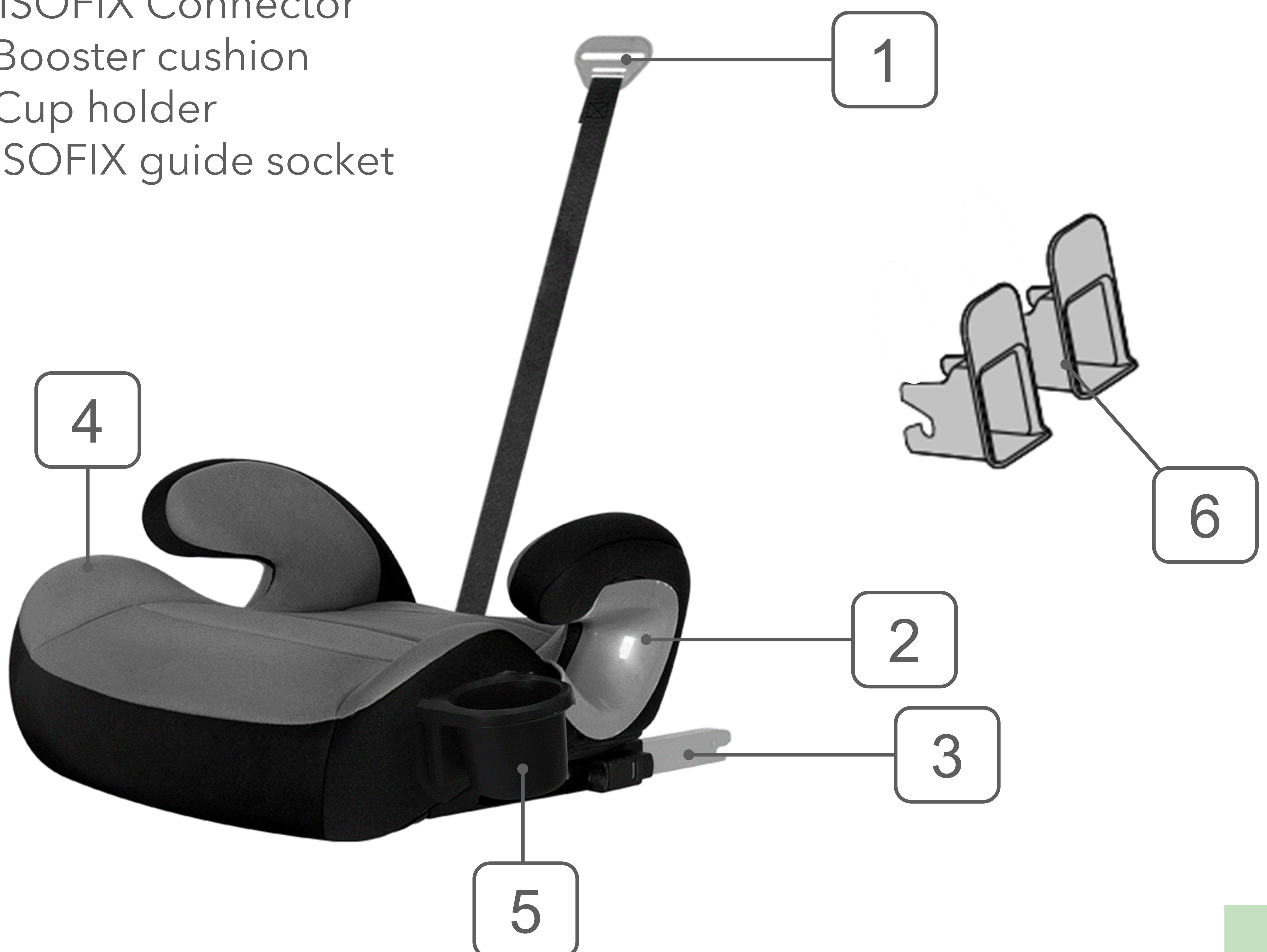
love inspired.

Dear Parents,  
Thank you for purchasing our product. Please read the operating instructions carefully before using the product for the first time. If you give the product to a third party, this manual must be handed over with it. Keep the instruction manual for future reference. The drawings in this manual may not match the physical objects. Please refer to the physical objects.

## 1. Product Overview

### 1.1 Part names

1. Belt fixer
2. Belt guide
3. ISOFIX Connector
4. Booster cushion
5. Cup holder
6. ISOFIX guide socket





# 1. Product Overview

## 1.2 Suitable Size Range

The LUNA booster cushion is designed for children from 125 cm to 150 cm in height and can be installed facing forward.

You can use your child car seat as follows:

Size Range	Installation		Category	Class	Child restraint mode
125-150cm	Forward facing	ISOFIX + Adult three point safety belt	Universal booster cushion	Non-integral	Adult three-point safety belt
125-150cm	Forward facing	Adult three point safety belt	Universal booster cushion	Non-integral	Adult three-point safety belt

### NOTICE

This is a Universal booster cushion Enhanced Child Restraint System. It is approved according to UN Regulation No.129, for use in i-Size compatible and universal vehicle seating positions as indicated by vehicle manufacturer in the vehicle user's manual.

- If in doubt, consult either the Enhanced Child Restraint System manufacturer or the retailer.

**Please note:** This seat is designed for forward-facing installation using Isofix connectors. Secure the child with the vehicle's 3-point seat belt. As an alternative, you may install the child car seat using only the 3-point seat belt. While not mandatory, using Isofix connectors for the installation is advised for optimal safety.

The car seat can be installed in the car in the places indicated by the manufacturer in the vehicle manual. It is required to read the vehicle manufacturer's operating instructions.



## 2. Important Safety Information



### WARNING

- Before use the product, please read the instruction manual carefully. The product is a safety product and is only safe when used in accordance with the instruction manual.
- For the future use of the seat, you must keep the instruction manual.
- Never leave your child unattended in the car.
- The car seat is designed to be mounted only on forward-facing seats.
- Do not use a child safety seat if the vehicle seat is equipped with front airbags. This can be dangerous. This does not apply to so-called side airbags.
- The product must be used on a forward facing seat that is fitted with 3-point belt which is approved according to ECE R16 or an equivalent standard.
- The product may be used on either the front or the back seat. However, we recommend that it is fitted on the back seat.
- The product has been approved according to the European safety standards (ECE R129/03) and is suitable for children with a height from 125-150cm.
- Remember that the internal safety harness holding the child should be adapted to the child's body shape and not twisted. For this reason, child should not wear thick clothes under the safety harness.
- After an accident the seat may become unsafe due to damage that is not be noticeable immediately. It should therefore be replaced.
- The safety of the seat can only be guaranteed by the manufacturer if it issued by the original owner.
- We advise you strongly that not to use a second-hand product, because you are not sure what has happened to it.
- The harness pads are important for the safety of your child, therefore use them at all the time.
- Ensure that all luggage and objects likely to cause injury in the event of an accident are properly secured.



## 2. Important Safety Information



### WARNING

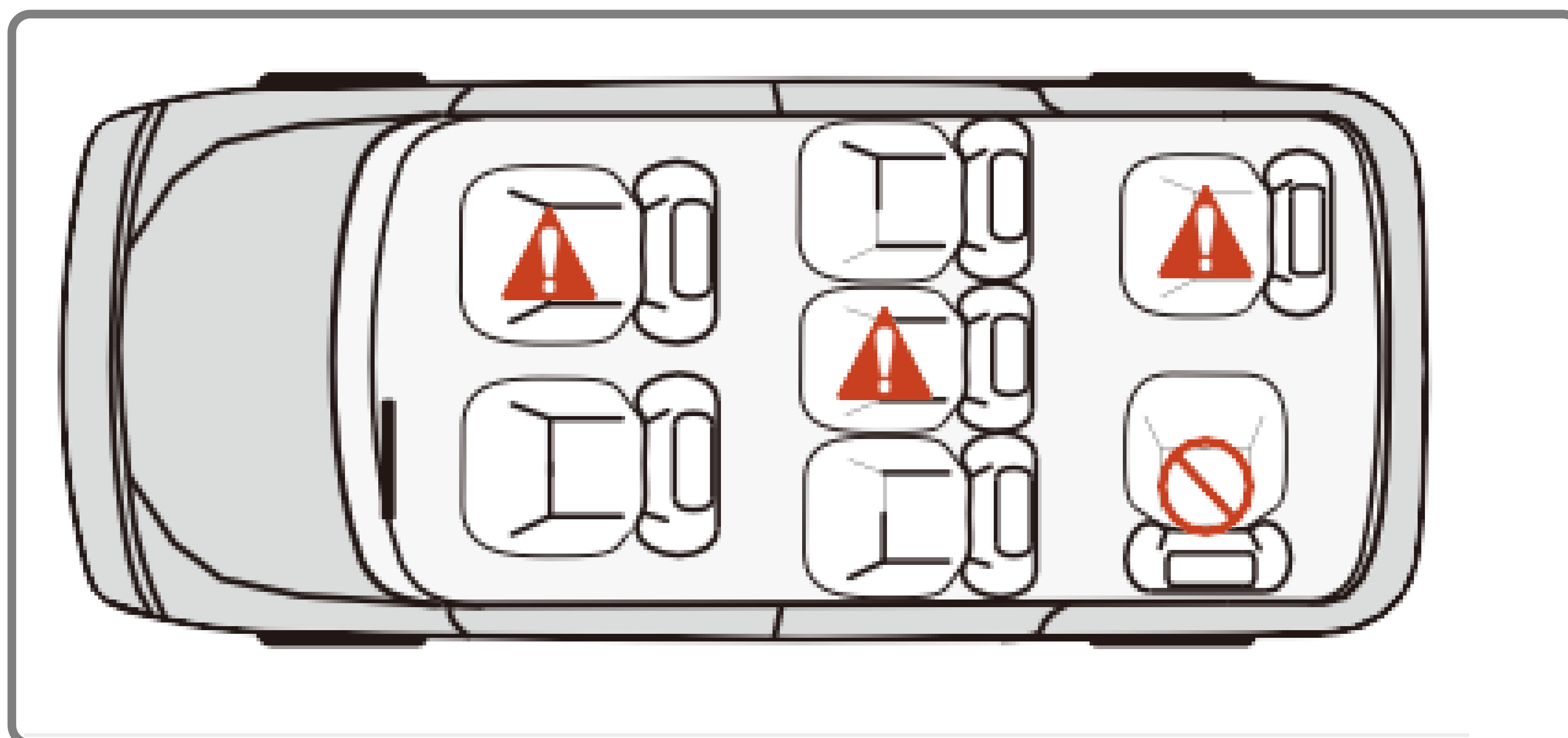
- It is recommended that the car seat should not be used more than 5 years from the date of production. The properties of the products may deteriorate due to, for example, ageing of the plastic and this may not be visible.
- The moving parts of the car seat should not be lubricated in any way.
- The baby car seat must not be used without the cover. Please use an original cover, as the cover contributes to the safety of the seat.
- The seat must be secured with a seat belt, even when it not on use. An unsecured seat may injure other passengers in the car in an urgent stop.
- The rigid items and plastic parts of a child restraint must be so located and installed that they are not liable, during everyday use of the vehicle, to become trapped by a movable seat or in a door of the vehicle.
- Ensure that the seat is not damaged by the webbing between or underneath heavy luggage, adjustable seats or slamming the car door etc.
- No alterations may be made to the product as this could affect part or the overall safety of the seat.
- In hot weather the plastic and metal parts of the product will be hot. You should cover the seat when the car parked under the sun.
- In order to prevent damage to the cover, do not remove the product's logo.
- Use the seat even in a short journey, as this is when most accidents occur.
- Take a short break in long journey. So that your child has some time for the relaxation.
- Set a good example yourself and always wear your seat belt.
- Tell your child that he/she should be never play with the harness buckle.
- **REMARK:** Your car seat can be fixed safely on almost seats of the cars. However, on some seats the belts are fixed so that proper installation is not possible, in that case, try another seat.



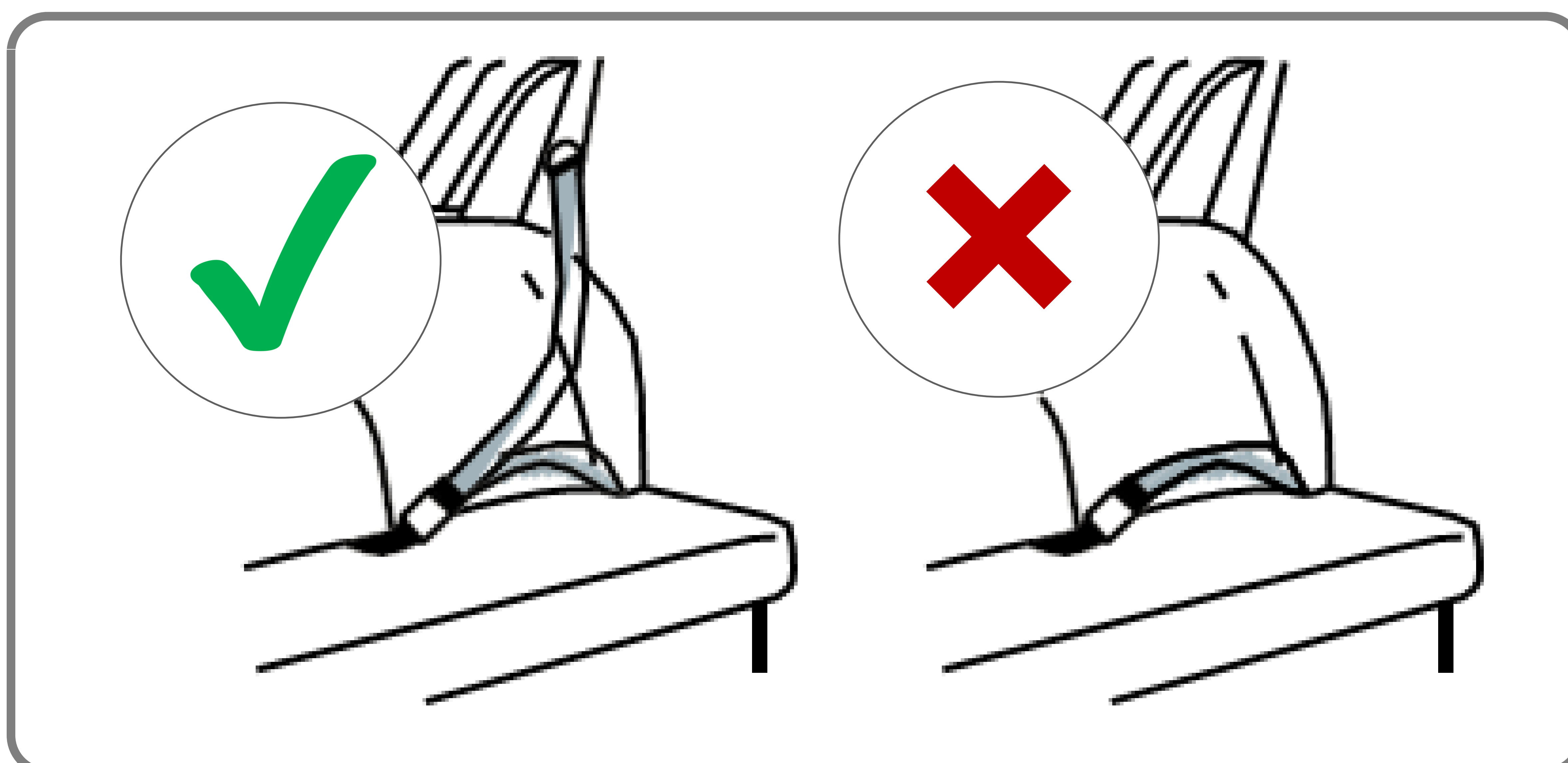
### 3. How to Use the Product

#### 3.1 Use in the vehicle

You can use your child car seat as follows:



- The car seat is designed to be mounted only on forward-facing seats.
- **ATTENTION! THE CAR SEAT MUST NOT BE MOUNTED ON REARWARD FACING OR SIDE FACING SEATS.**



Please observe the regulations applicable to your particular country. The safety belt must be approved to ECE R 16 or other equivalent standards.

**DO NOT USE WITH 2-POINT BELT.**  
**Please install with the 3-point belt.**

## 3. How to Use the Product

### 3.1 Use in the vehicle

▪ In the direction of travel	Correct
▪ Against the direction of travel	Error
▪ Vehicle is fitted only with 2-point safety belt.	Error
The use of a 2-point belt substantially increases the risk of injury to your child in the event of an accident.	
▪ Vehicle is fitted with 3-point safety belt.	Correct
<b>The safety belt must be approved to ECE R16 or a comparable standard (see test label on belt with an "E" or "e" in a circle).</b>	
▪ On front passenger seat	Correct (1)
<b>*** (1) Do not use on passenger seats with a front airbag!</b>	
▪ On outer rear seat	Correct
▪ On centre rear seat*	Correct (2)
<b>*** (2) Can be used if the vehicle seat is equipped with 3-point belt</b>	

(Please observe the regulations applicable to your particular country).



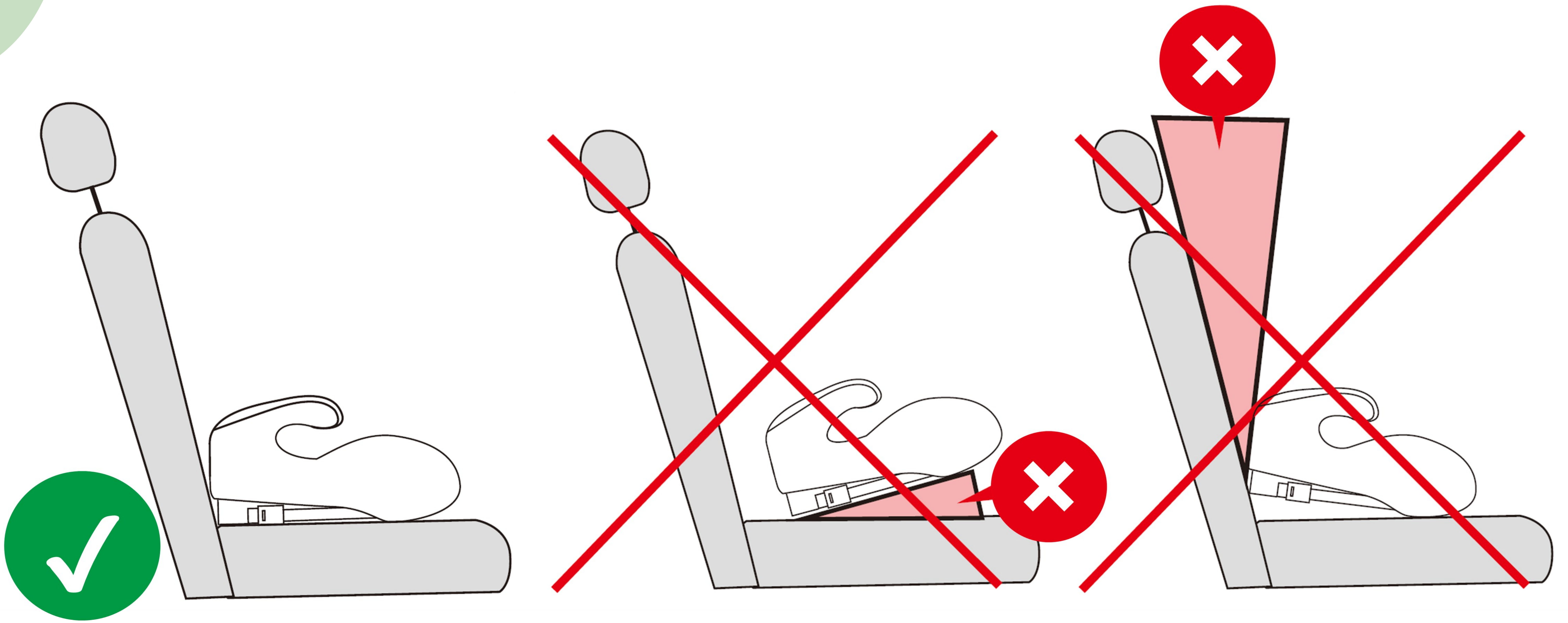
### IMPORTANT!

- If the car seat is installed in the front seat, the front air-bag must be deactivated. It is recommended to install the car seat only on the back seats of the car.
- Please refer to your vehicle operating manual for information on the suitability of the seat for use with a car seat.

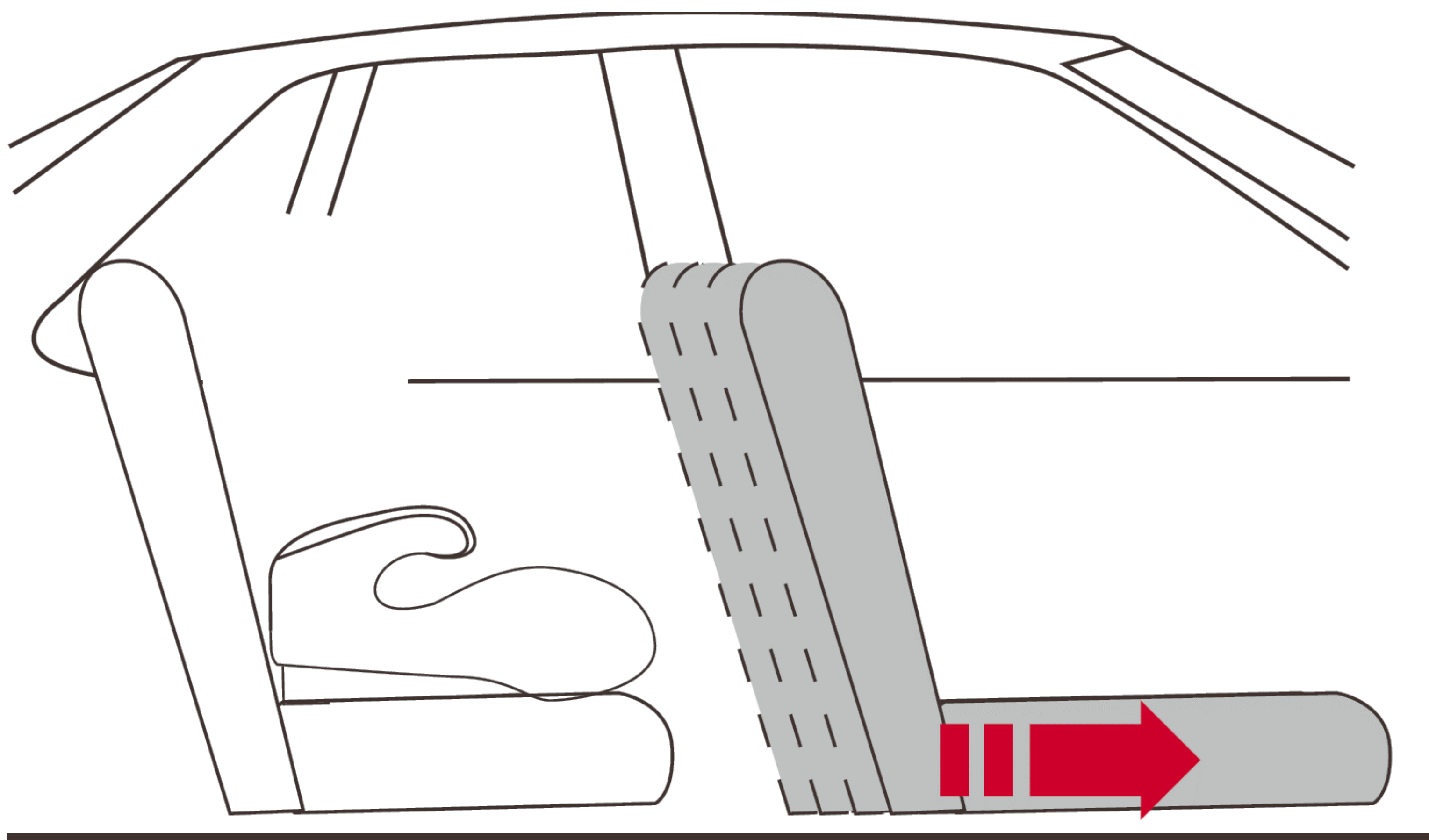


## 3. How to Use the Product

### 3.1 Use in the vehicle



**IMPORTANT!** Make sure there are no gaps between the car seat and the vehicle seat.

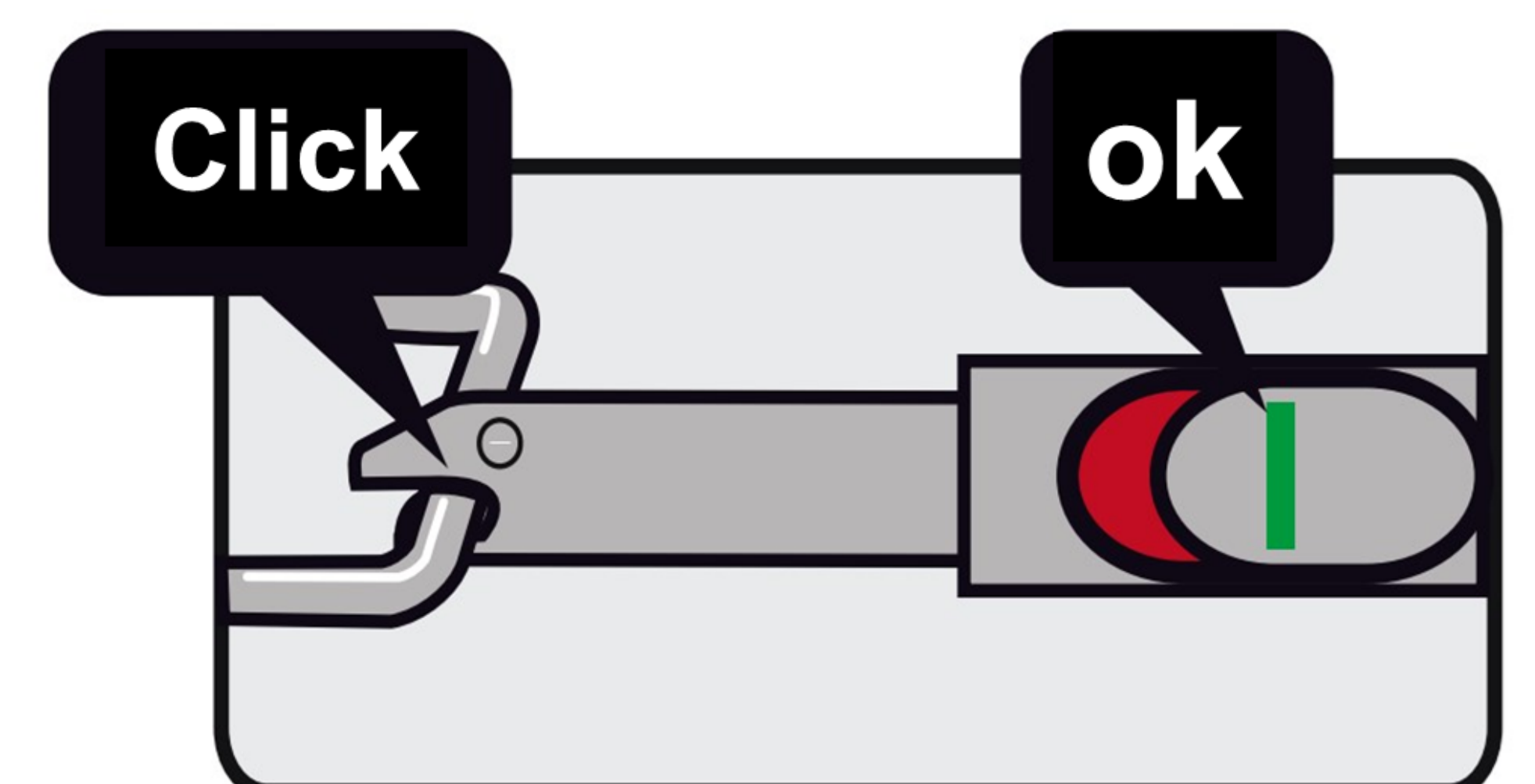
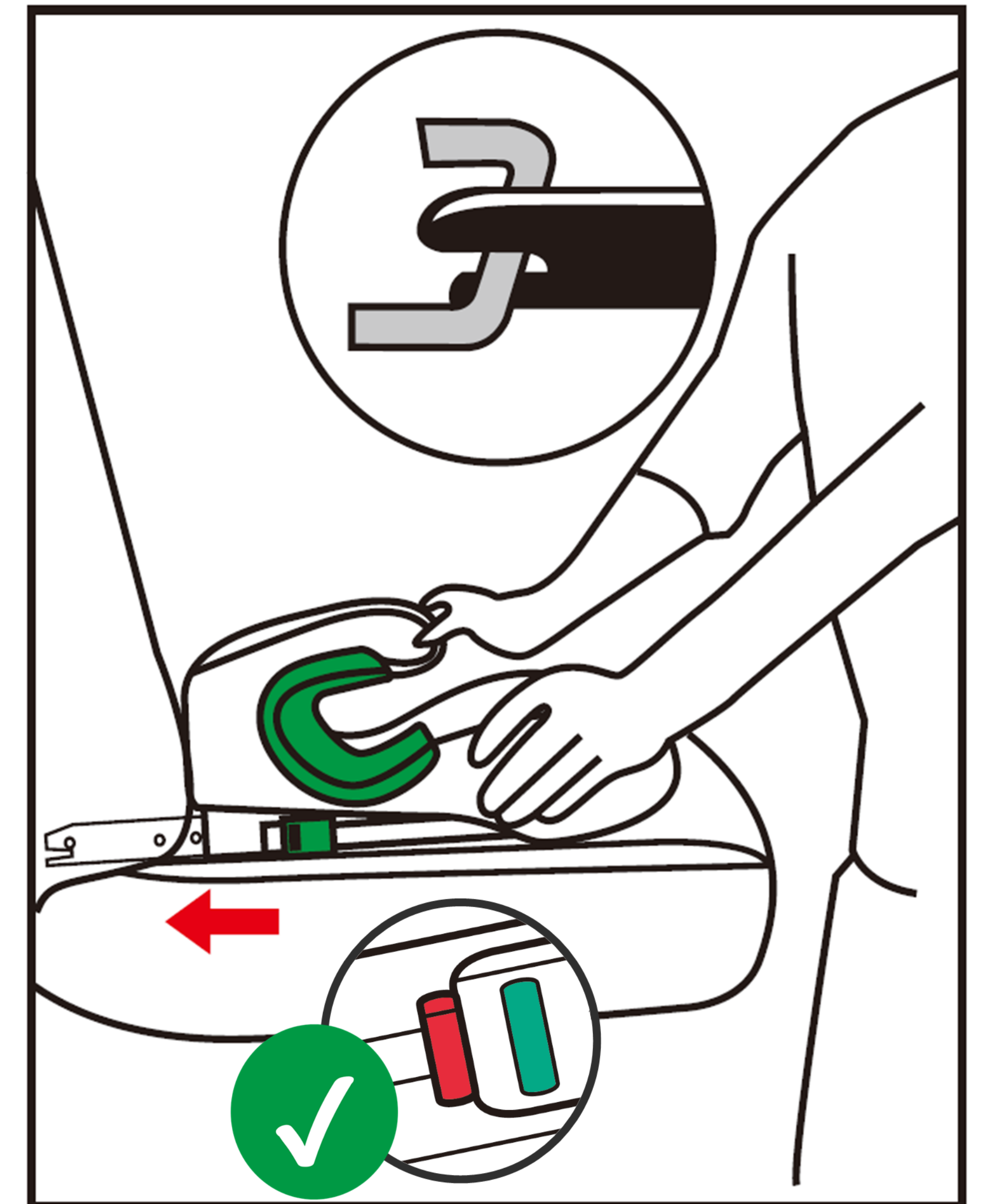
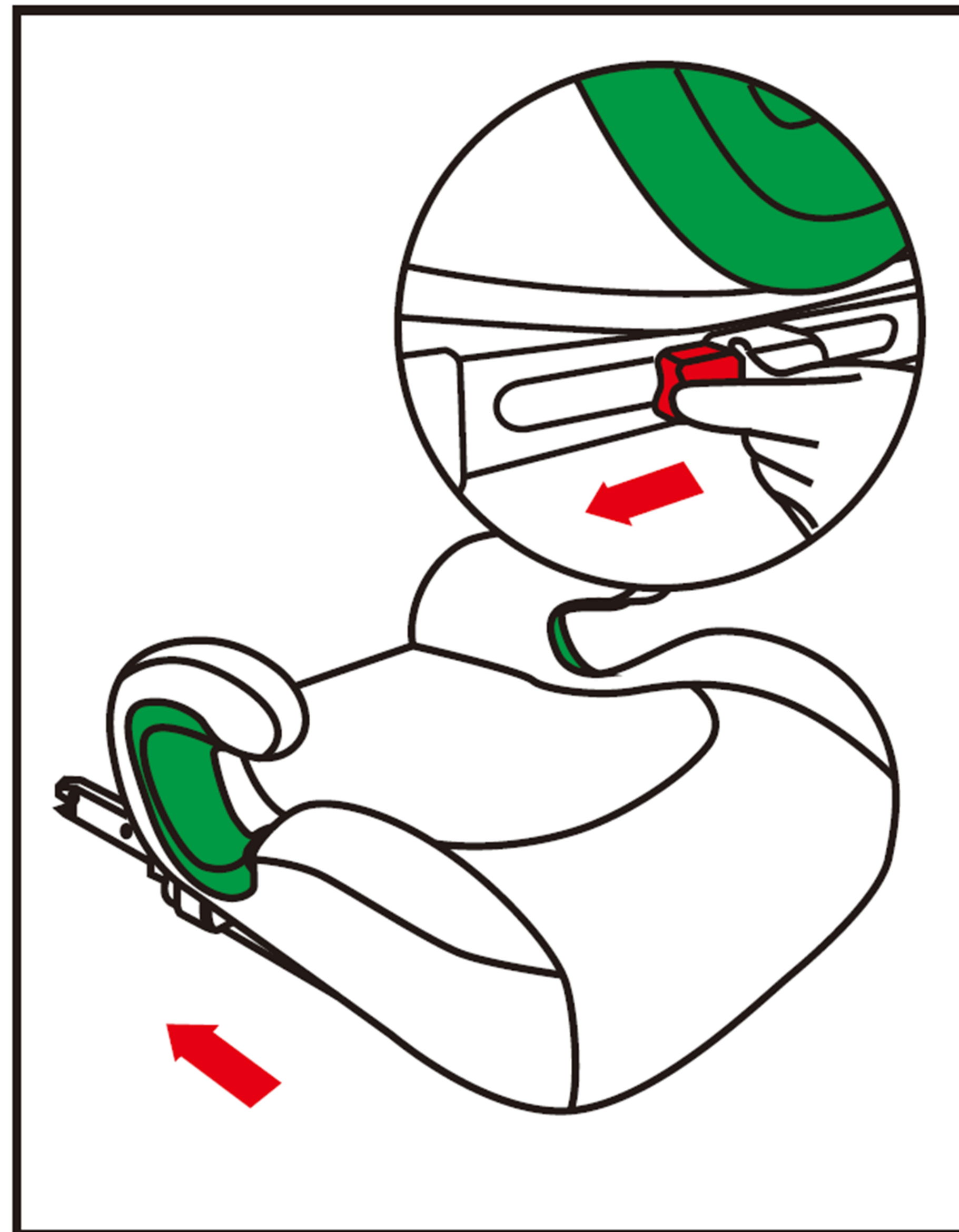
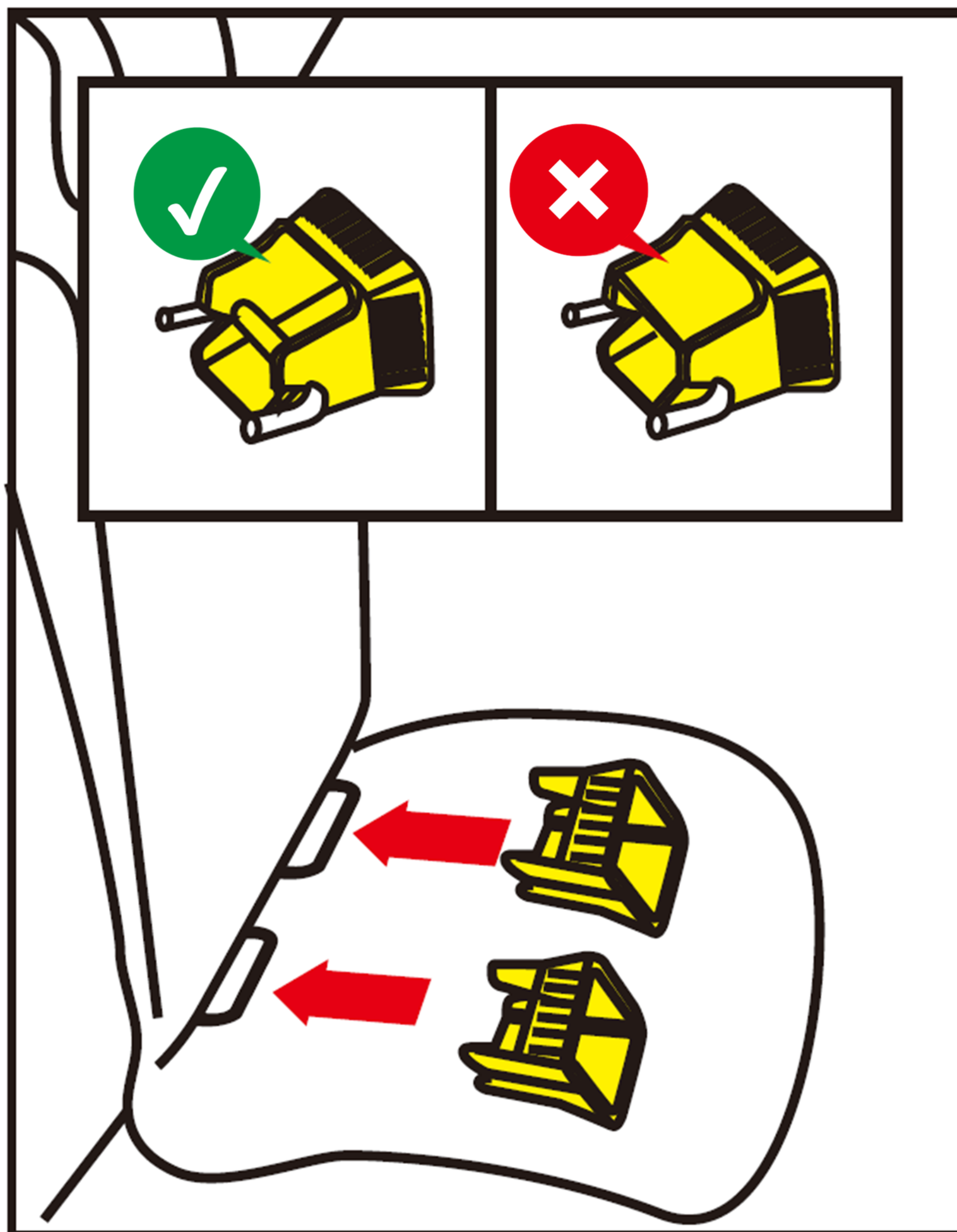


- **IMPORTANT!** To ensure your child's comfort, move the front vehicle seat as far forward as possible to provide room for your child's legs.



## 3. How to Use the Product

### 3.2 ISOFIX installation



- Locate the ISOFIX anchor points in your vehicle. Attach the two red guide sockets (6) to these ISOFIX anchor points to prepare for the seat installation.
- While pressing the ISOFIX release button, slide the ISOFIX connectors on the car seat outward to extend them to their fullest length.
- Attach the car seat's ISOFIX connectors to the vehicle's ISOFIX anchor points until you hear a "click," indicating they are locked in place.

**Tip:** Refer to your vehicle's owner's manual or consult your car manufacturer or local dealership to find the specific location of the ISOFIX anchor points in your car.

**NOTE! Ensure the locking latches are correctly engaged by verifying that both button indicators show green.**

- Listen for a click from the ISOFIX connectors to confirm engagement and give the car seat a tug to ensure it's firmly in place without any slack. If the seat moves or the ISOFIX latches disengage, go through the installation steps again



## 4. INSTALLATION



**Please do not leave your child unattended in the child safety seat in the vehicle.**

**In the case of an emergency stop or an accident unsecured persons or objects may cause injury to other vehicle occupants. Please always check that:**

- The backrests of the vehicle seats are locked (i.e. that a foldable rear seat bench latch is engaged).
- All heavy or sharp-edged objects in the vehicle (e.g. on the parcel shelf) are secured.
- All persons in the vehicle have their seat belts fastened.
- The child safety seat is always secured when it is in the vehicle, even if no child is being transported.

### **To protect your vehicle**

Some vehicle seat covers of sensitive materials (e.g. velour, leather, etc.) may develop wear marks when child seats are used. This can be avoided by placing a blanket or towel under the child seat.

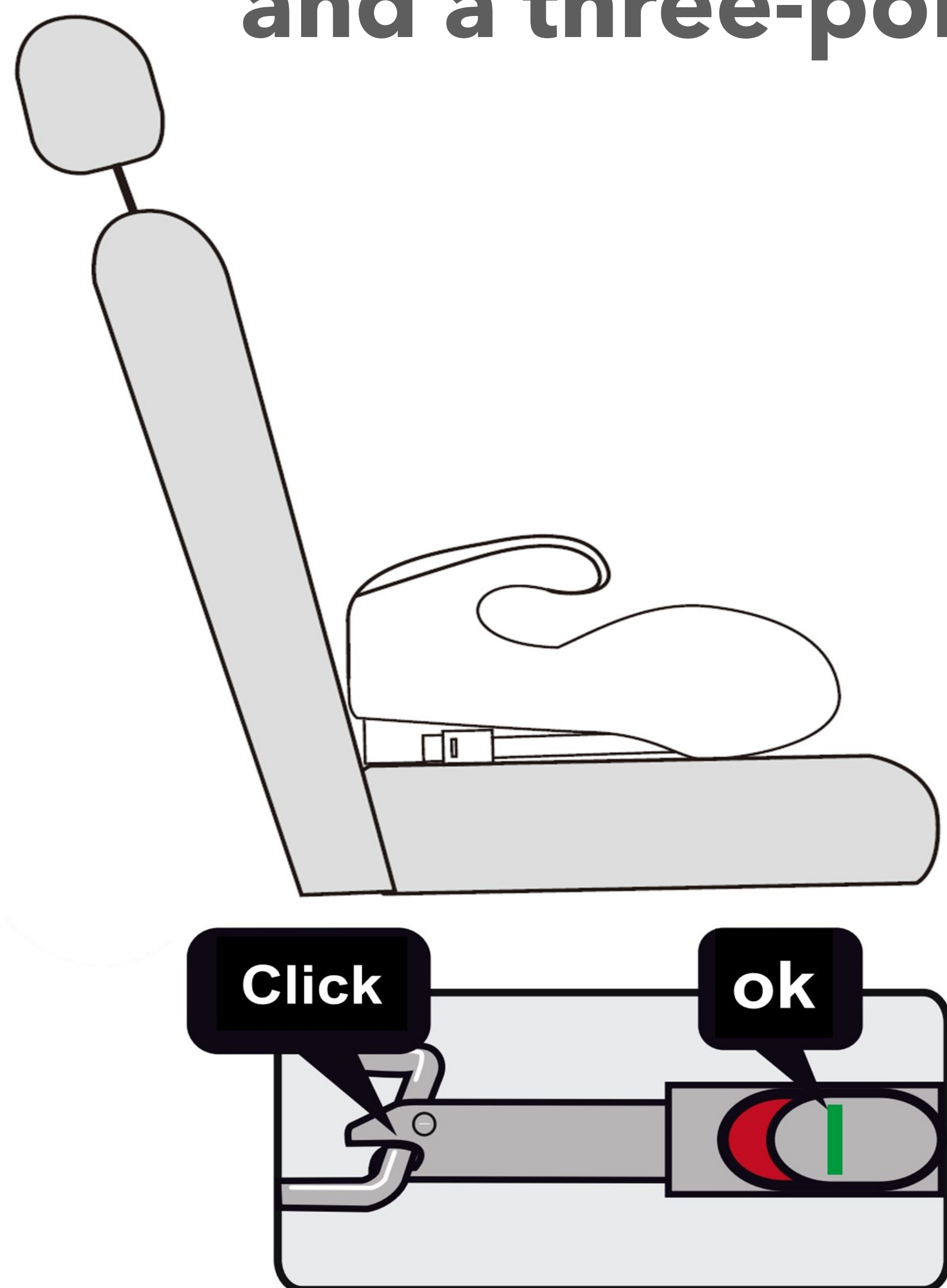
### **Special note:**

- This product will reduce the harm of traffic accidents to children, but cannot guarantee the absolute safety of children, so when you driving, please strictly abide the local traffic laws and regulations
- This product has been approved with regulation UN Regulation No.129/03 series, for general use in vehicles and it will fit most, but not all car seats position.
- Please keep this instruction manual in good condition and read it thoroughly before use. It will help you to install the child safety seat correctly. Any incorrect installation may cause serious injury to your child. The manufacturer is not responsible for any danger caused by wrong installation.

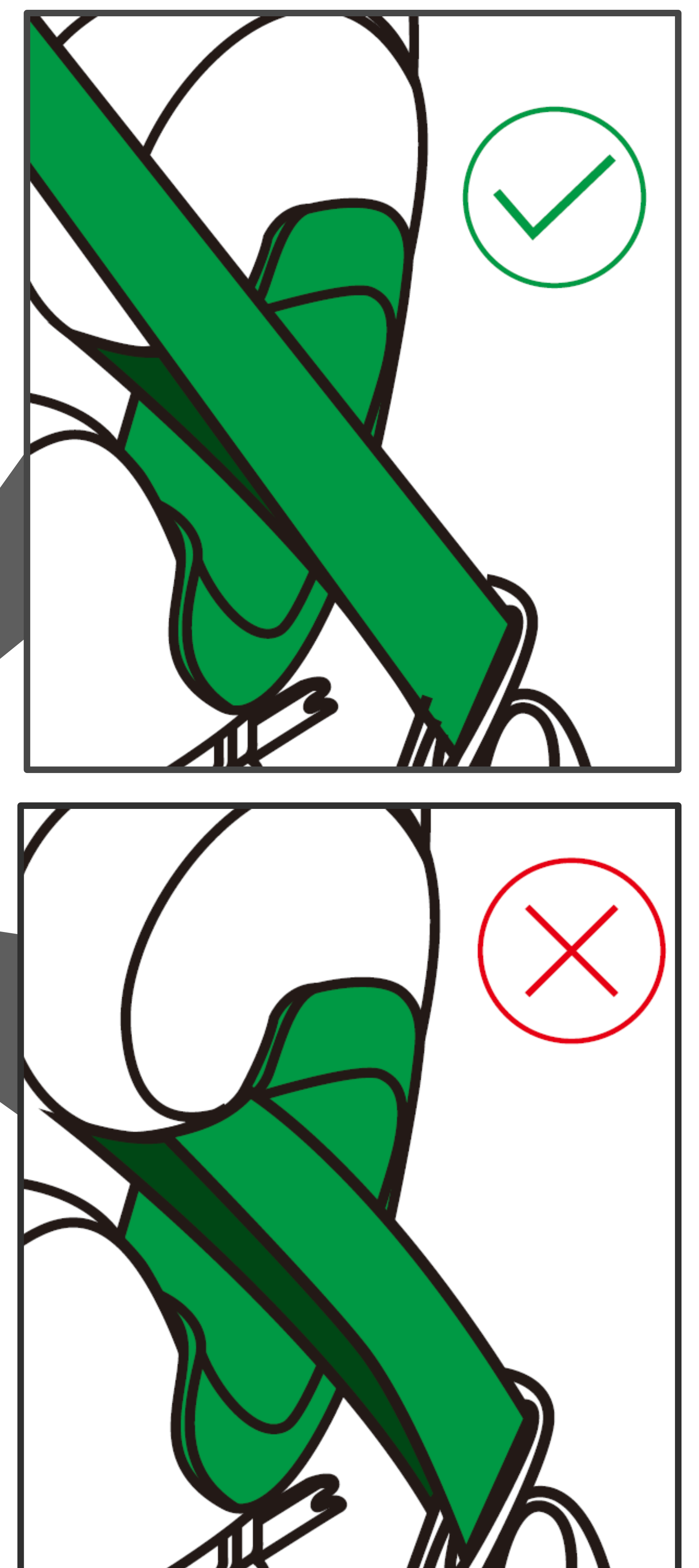
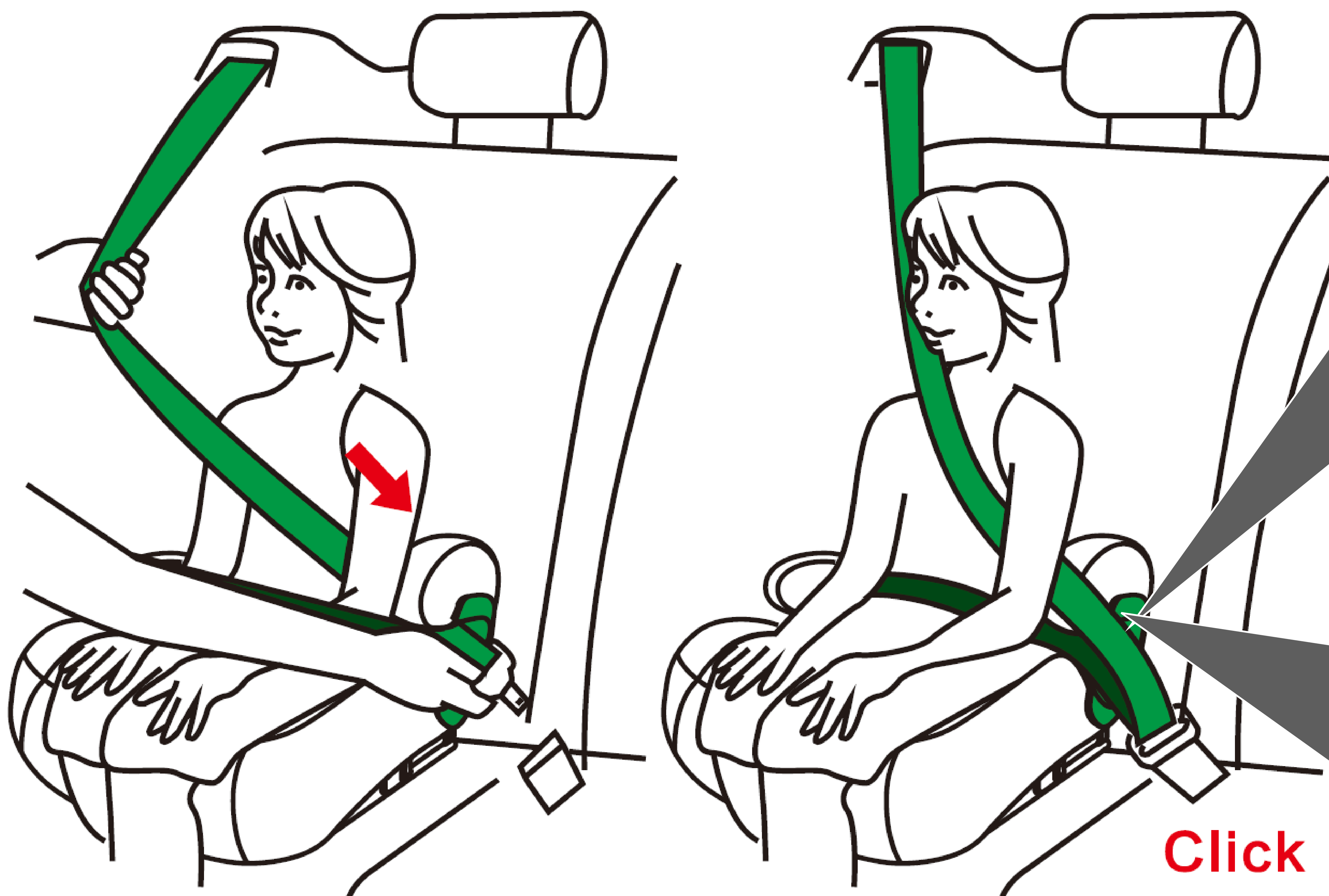


## 4. INSTALLATION

### 4.1 Forward-facing car seat installation for children between 125 and 150 cm tall using the ISOFIX Connectors and a three-point car seat belt



- Step 1: Position the car seat forward-facing on the vehicle seat and secure it using the ISOFIX connectors. (Refer to section 3.2 for detailed instructions).
- Step 2: Push the car seat firmly until it is snug against the vehicle's backrest, checking that both ISOFIX indicators turn green to confirm proper attachment.



- Step 3: Place your child in the car seat.
- Step 4 : Buckle your child in by closing the buckle of the 3-point harness until you hear a click.
- Step 5 : Make sure that the lap belt runs underneath the two armrests along the green belt guides. The diagonal strap must run above the armrest.
- Step 6 : Pull on the diagonal strap to tighten it. Make sure that the straps are not twisted.

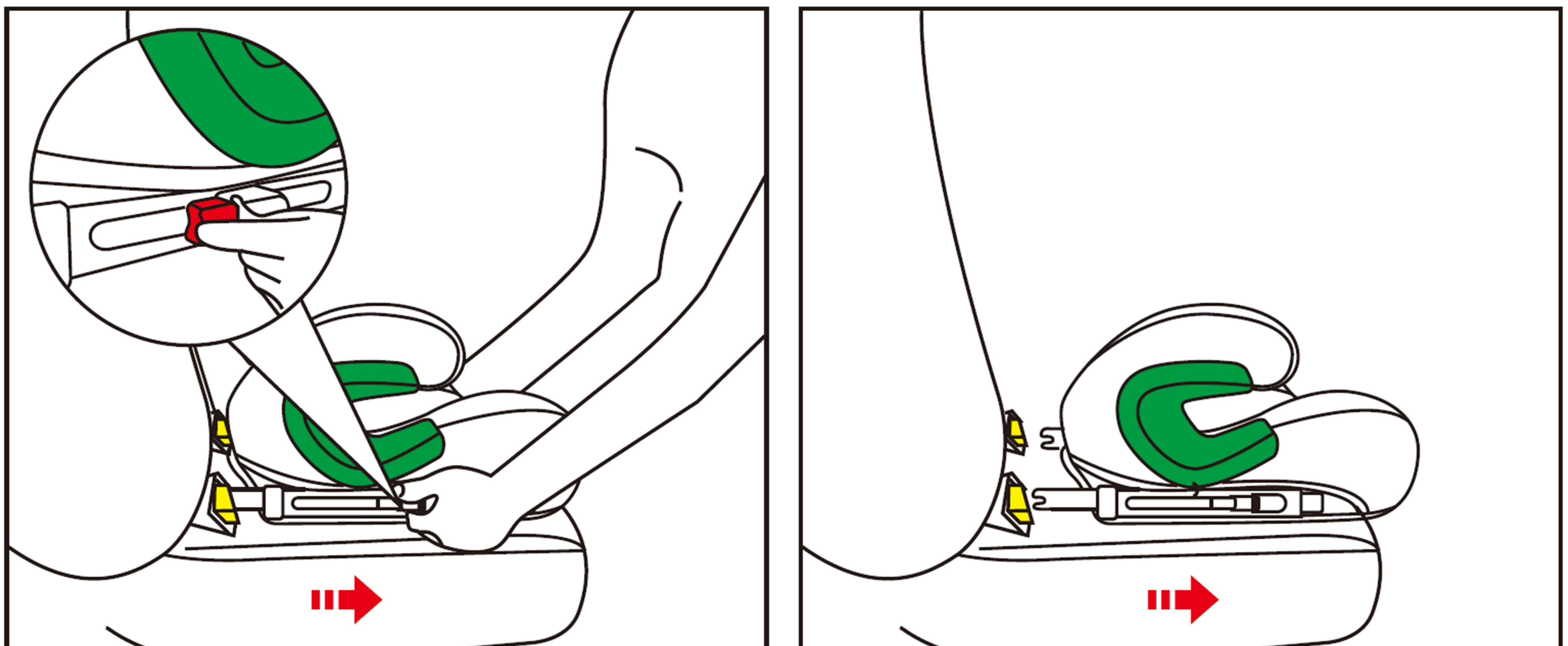


## 4. INSTALLATION

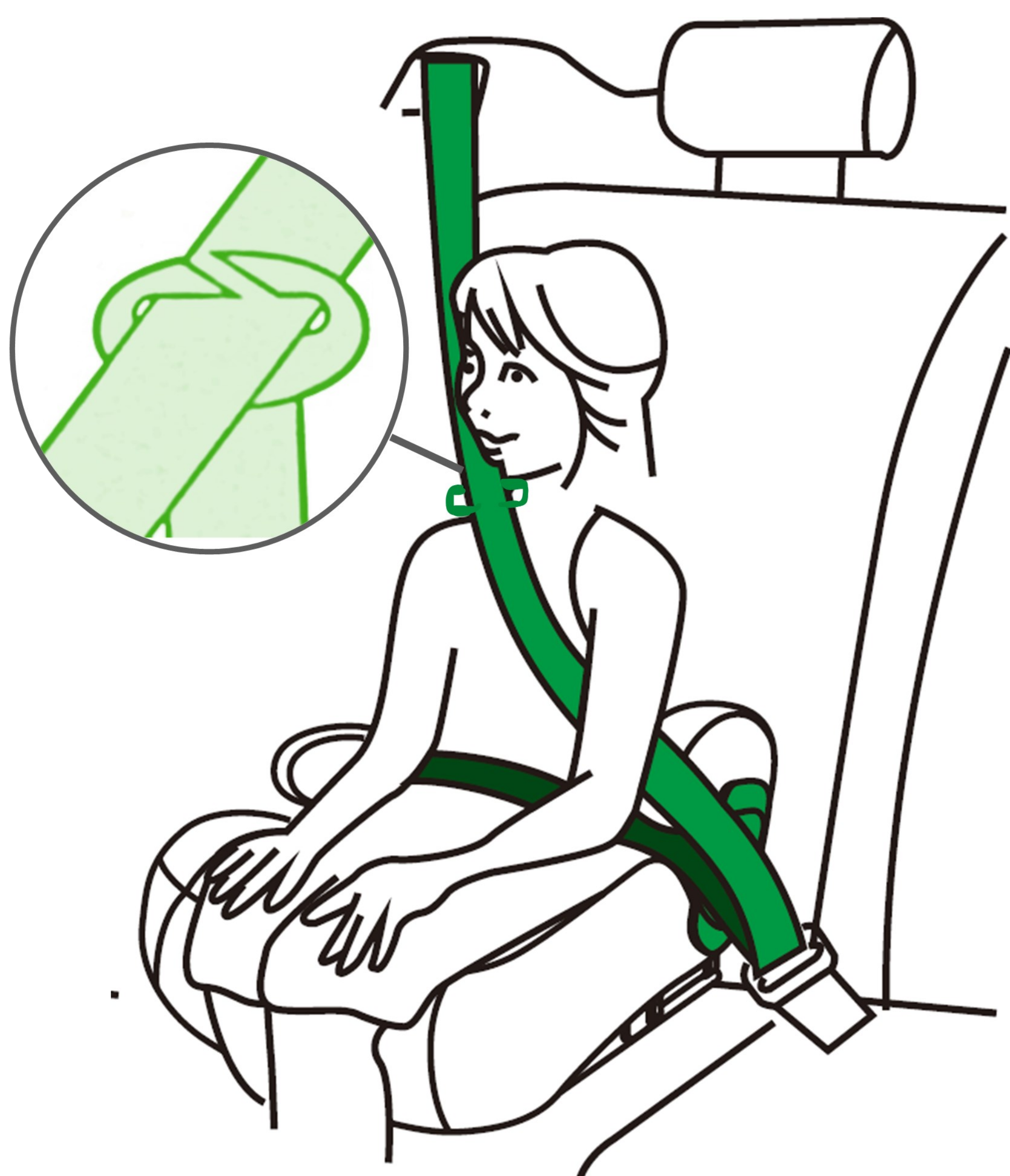
### 4.1 Forward-facing car seat installation for children between 125 and 150 cm tall using the ISOFIX Connectors and a three-point car seat belt

#### Removal of the child car seat:

- Simultaneously press and hold the ISOFIX release switches on both sides. The ISOFIX lock indicators will turn red, signifying the locks are disengaged.
- Pull the car seat outward to detach it from the ISOFIX anchorage points in your vehicle.



#### BELT FIXER

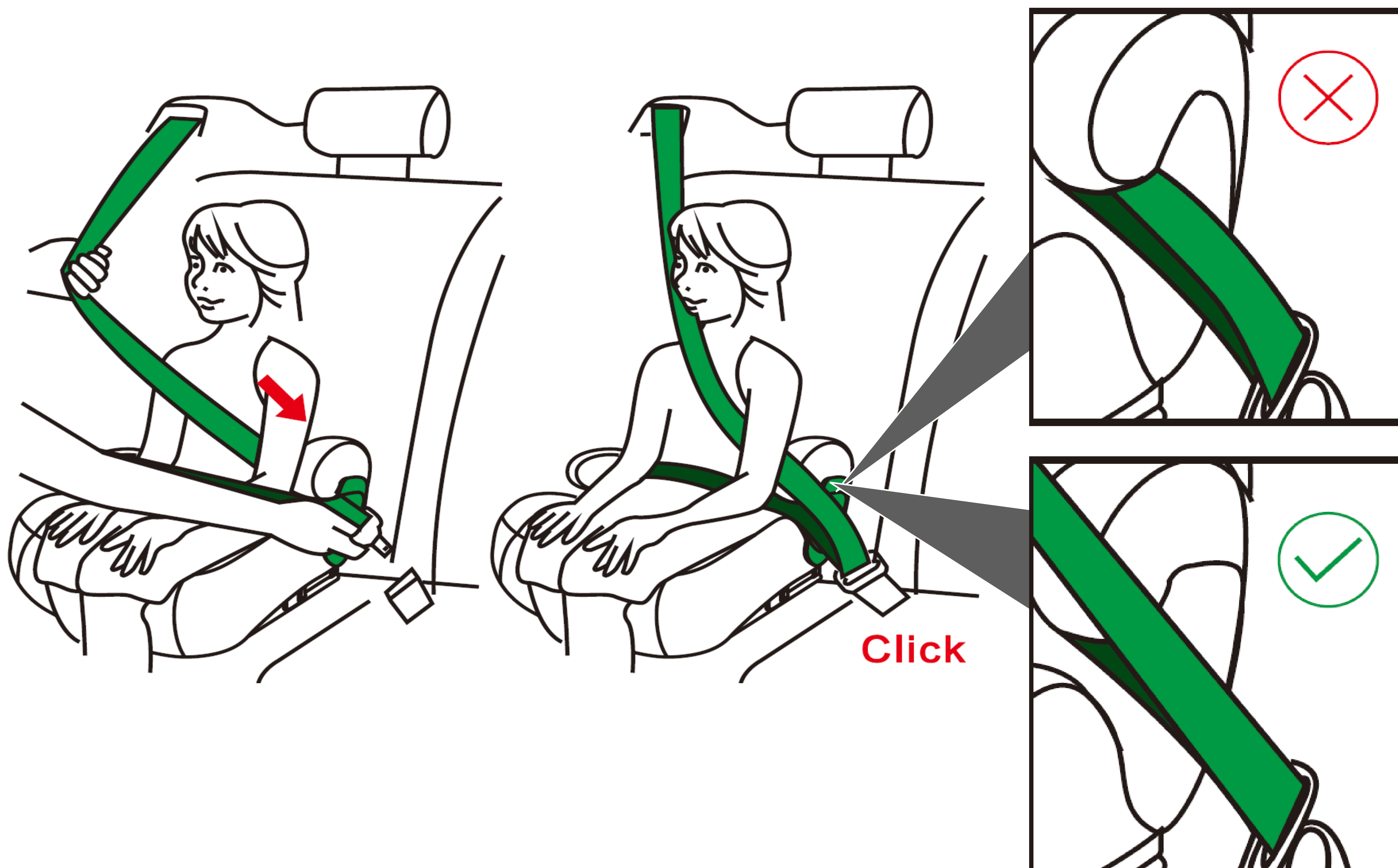


Optionally, you can also use the belt fixer with the vehicle's 3-point belt. Weave the belt fixer onto the diagonal shoulder belt, positioning it to sit just above your child's shoulder for a better fit. Adjust the belt fixer's strap length as needed to ensure it aligns correctly with the shoulder belt.



## 4. INSTALLATION

### 4.2 Forward-facing car seat installation for children between 125 and 150 cm tall using a three-point car seat belt



- Step 1: Retract the ISOFIX connectors into the base of the car seat. Position the car seat forward-facing on the vehicle seat.
- Step 2: Push the car seat firmly until it is snug against the vehicle's backrest.
- Step 3: Place your child in the car seat.
- Step 4 : Buckle your child in by closing the buckle of the 3-point harness until you hear a click.
- Step 5 : Make sure that the lap belt runs underneath the two armrests along the green belt guides. The diagonal strap must run above the armrest.
- Step 6 : Pull on the diagonal strap to tighten it. Make sure that the straps are not twisted.



Optionally, you can also use **the belt fixer** with the vehicle's 3-point belt. Weave the belt fixer onto the diagonal shoulder belt, positioning it to sit just above your child's shoulder for a better fit. Adjust the belt fixer's strap length as needed to ensure it aligns correctly with the shoulder belt.



## 5. CARE INSTRUCTION

### 5.1 Daily Maintenance

- Regularly inspect the child seat during daily use. Replace the seat immediately if it has been involved in an accident.
- Store the child seat in a dry and well-ventilated area to prevent mold and dampness.
- If the seat accumulates dust, wipe the seat belt and plastic parts with a slightly damp sponge and allow them to air dry.
- In case food or drink spills on the buckle, detach the seat belt from the child seat and rinse it with warm water gently. Let it air dry thoroughly.
- For cleaning the car seat's fabric cover, please follow the instructions below:

### 5.2 Cleaning

Please be sure to use only original seat covers, as the seat cover is important to the proper functioning of the system.



**The child seat must not be used without the seat cover.**

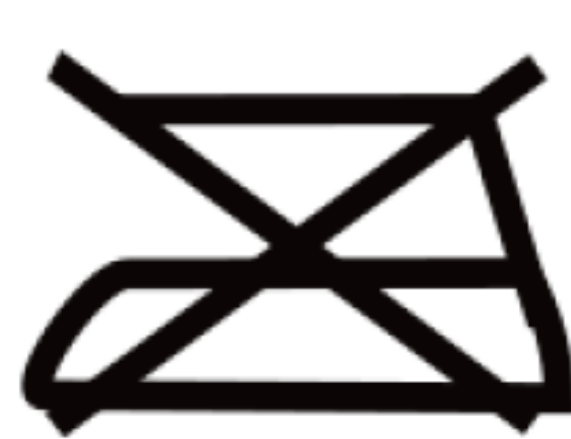
- The cover can be removed and washed with a mild detergent using the washing machine's cycle for delicate items (30°C). Please observe the instructions on the washing label of the cover. The colours of the cover may fade if washed at more than 30°C.
- Do not spin, and never tumble dry in an electric clothes dryer (the fabric may separate from the padding).
- The plastic parts can be cleaned using soapy water. Do not use harsh cleaning agents (such as solvents).



HAND WASHING



DO NOT BLEACH



DO NOT IRON



DO NOT  
DRY CLEAN



DO NOT  
TUMBLE DRY

### 5.3 Remove and assemble the seat cover

Start by removing the crotch pad and buckle, followed by the shoulder straps and comfort cushion.

Take off the fabric cover from the child seat. To reassemble, reverse the steps you took to remove the cover.

Note: Never apply solvents, chemical detergents, or lubricants to any part of the child seat as these can compromise the integrity and safety of the product.



## 6. Environmentally friendly disposal

**Warning Danger of suffocation!** Packaging material is dangerous for children. Never let children play with packaging material.

### 6.1 Disposal and packaging

The packaging of your unit consists of materials that are necessary to guarantee effective protection during transport. These materials are fully recyclable and therefore reduce the environmental impact. Dispose of the packaging in a bin for recyclable materials.

### 6.2 Disposal of old equipment

Old appliances must be disposed of in accordance with the guidelines and regulations of the local waste disposal authority. Check with your local administration for the address of the nearest recycling center and deliver your appliance there.

**The real design of the products may differ from the pictures presented. All the pictures in this user guide are for reference only.**

**The product has been tested and meets all the requirements of the ECE R129 /03.**





# FableKids

love inspired.



Office address:  
Fablekids  
Gneisenaustraße 10-11  
D-97074 Würzburg

Return address can be found in the imprint: <https://www.fable-kids.com>

VAT identification number: DE 263752326  
Court of the Commercial Register is Würzburg, HRB 10082  
WEEE Reg.-No. DE 61617071



Office address: FableKids • Gneisenaustraße 10-11 •  
97074 Würzburg



Our customer service number:  
Tel. +44 (0) 208 068 5604



E-Mail: [info@fable-kids.com](mailto:info@fable-kids.com)



Return address can be found in the imprint: <https://www.fable-kids.com>