

AREBOS

Office chair

AR-HE-BS2



Please follow all safety measures in this user manual to ensure safe use.

Thank you for your trust in AREBOS.

Table of contents

1	Introductory and safety instructions.....	3
1.1	Introduction.....	3
1.2	Explanation of the symbols	3
1.3	Important safety instructions	3
2	Scope of delivery	4
3	specifications.....	4
4	Assembly	5
5	Seat height adjustment	6
5.1.	Increase seat height	6
5.2.	Reduce seat height.....	6
6	Setting the tilt angle	7
7	Storage, cleaning	7
8	Environmentally friendly disposal.....	7
6.1	Disposal and packaging	7
	EU Declaration of Conformity	8

Thank you for purchasing our product. Please read the user manual carefully before using the product for the first time. If you leave the product to a third party, this operating manual must be handed over with it. Keep the instruction manual for future reference. The drawings in this manual may not match the physical objects. Please refer to the physical objects.

1 Introductory and safety instructions

1.1 Introduction

- This manual is intended to familiarize you with the installation, use, and maintenance of the product. To install the device safely and correctly, please read the user manual before you begin.

1.2 Explanation of the symbols



Warning! Read the safety instructions carefully. Failure to follow safety precautions may result in serious injury or damage. Keep the instruction manual in a safe place.



Beware of the risk of crushing!




Attention, no toys! Do not let children sit unsupervised in the chair.



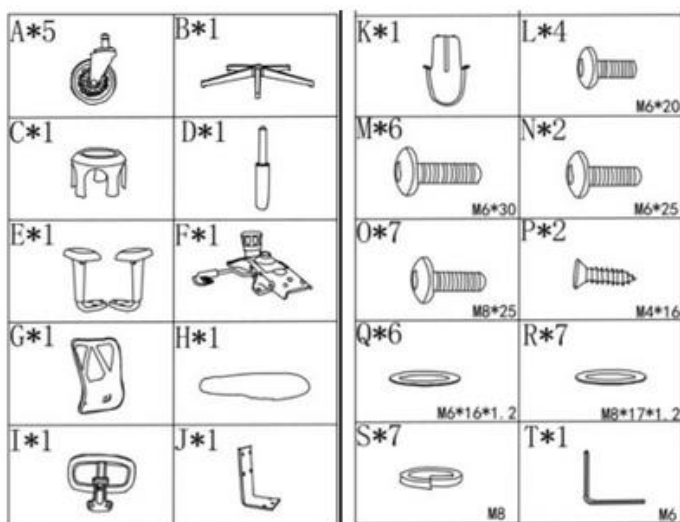
Do not stand, lie or tilt!

1.3 Important safety instructions

- Your safety is of the utmost importance to us. Please make sure you have read this instruction manual **before** attempting to use the item. If you are unsure about the information contained in this guide, please contact the retailer where you purchased your device.
-  **WARNING! Suffocation!** Packaging material is dangerous for children. Never let children play with packaging materials.
- This is not a toy. Do not let toddlers play with it / jump on it.
- Do not use the item until you have completely assembled the chair.

- Do not use sharp objects such as knives or the like when opening the package.
- Keep all items away from children during assembly.
- **⚠ WARNING! Injury!** Some parts can be sharp-edged or heavy.
- Use the chair only for the purposes originally intended by the manufacturer.
- Use the chair only on a flat surface.
- The **maximum load capacity is 136kg (1 person)**, do not exceed the weight to avoid injury or breakage. Do not lean your whole body on the armrests.
- Do not place the chair next to fireplaces, as the materials are highly flammable.
- Do not expose the office chair to direct sun, as this can cause damage.
- Make sure that all screws are tightened.
- The gas spring may only be replaced or repaired by trained specialists.
- The item is not intended for commercial use. The item is designed for private indoor use only.
- If any modifications are made to the item, the warranty will be void. In this case, the manufacturer bears no liability for damage

2 Scope of delivery

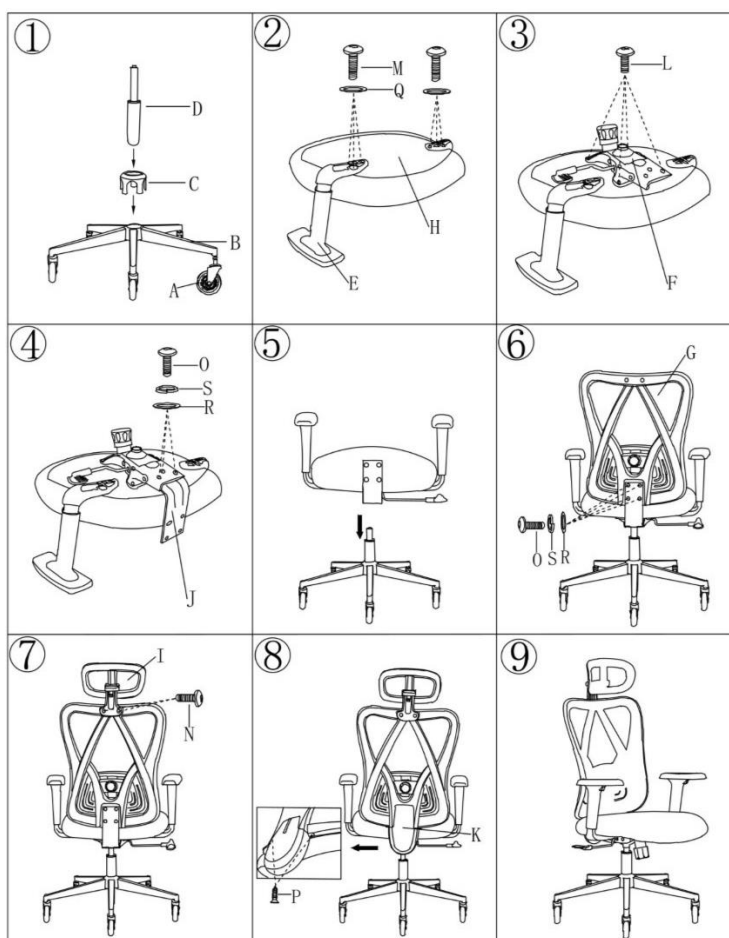


Part	Designation
A	Roles
B	Base
C	Base Cover
D	Gas spring
E	Armrest right and left
F	Lifting mechanism
G	Backrest frame
H	Seat
I	Headrest
J	Metal connectors
K	Decorative cover
L,M,N,O,P,Q,R,S	Screws and washers
T	Hex key

3 specifications

Model	AR-HE-BS2
Color	Black
Ultimate load	136kg
Seat	46-56cm
Seat size	52*50cm
Overall depth	114-130cm
Weight	15.5kg

4 Assembly



Step 1: Assemble the base

- Insert the rollers (A) into the openings provided in the base (B) until a clicking sound is heard.
- Place the base cover (C) over the center opening of the base (B).
- Insert the gas spring (D) into the center opening of the base (B) and make sure it passes through the gas strut cover (C).

Step 2: Attach the armrests to the seat

- Turn the seat (H) upside down.
- Align the armrests (E) with the screw holes on each side of the seat (H).
- Secure the armrests with screws (M) and washers (Q). Tighten them with the Allen key (T).

Step 3: Attach the lifting mechanism

- Align the lifting mechanism (F) with the pre-drilled holes on the underside of the seat (H).
- Use screws (L) to attach the lifting mechanism to the seat. Tighten with the Allen wrench (T).
- Make sure the mechanism is aligned correctly as shown in the image.

Step 4: Attach the metal connectors

- Position the metal connector (J) in the mechanism (F).
- Align the holes of the metal connector (J) with the corresponding holes in the mechanism (F)
- Use screws (O) along with washers (S and R) to secure the connector and tighten them tightly with the Allen wrench (T).

Step 5: Attach the seat to the base

- Take the assembled seat from step 4 and the assembled base from step 1.
- Align the hole in the lifting mechanism (F) at the bottom of the seat and at the top of the gas

spring (D).

- Carefully lower the seat set onto the gas spring. Make sure it slides securely onto the top of the treadle spring and sits firmly in place.

Step 6: Attach the backrest

- Position the backrest frame (G) on the metal connector (J) attached to the seat cushion. The plug should be facing outwards.
- Align the screw holes on the backrest frame (G) with those of the metal connector (J).
- Use screws (O) along with washers (S and R) to firmly secure the backrest frame to the metal connector.
- Tighten all screws firmly with the Allen wrench (T) to ensure that the backrest is stable and properly aligned.

Step 7: Attach the headrest

- Align the headrest (I) with the top of the backrest frame (G) to make sure the holes match.
- Securely attach the headrest to the backrest frame with screws (N).
- Tighten the screws with the Allen wrench (T) to ensure that the headrest is stable.

Step 8: Attach the decorative cover

- Take the decorative cover (K) and position it over the metal connector (J) on the back of the chair.
- Align the holes on the decorative cover on the connector.
- Attach the decorative cover (K) with the screw (P). Tighten it tightly with the Allen key (T).

Step 9: Final inspection

- Check the entire chair to ensure that all components are securely attached and properly aligned.
- Try the following features:
- Height Adjustment: Use the lever under the seat to ensure smooth height adjustment.
- Tilt and recline: Check the reclining mechanism for smooth operation.
- Headrest and armrest adjustments: Make sure the headrest and armrests move freely and stay in place when adjusted.
- Wheels: Make sure the wheels are smooth and the chair is stable.
- Once everything is in order, your chair assembly is complete and ready for use!

NOTE: Make sure that all functions (height adjustment, tilt and wheels) are working smoothly. If something feels loose or misaligned, check the corresponding step again.

5 Seat height adjustment

5.1. Increase seat height

Stand next to the chair and pull the height adjustment lever up with one hand without straining the seat.

5.2. Reduce seat height

Sit on the item and push the height adjustment lever down with one hand.


6 Setting the tilt angle

- Pull the lever under the seat to adjust the tilt angle using your body weight (tilt backwards and forwards)
- Press the lever under the seat to fix the tilt angle

7 Storage, cleaning

Always store the item in a dry and clean place at room temperature when not in use. Clean only with water and then wipe dry with a cleaning cloth.
Important! Never clean with harsh detergents.

8 Environmentally friendly disposal

 **WARNING! Suffocation!** Packaging material is dangerous for children. Never let children play with packaging material.

6.1 Disposal and packaging

- The packaging of your device is made of materials necessary to guarantee effective protection during transport. These materials are fully recyclable and thus reduce the environmental impact. Dispose of the packaging in a bin for recyclable materials.

Our customer service number: Tel. +49 (0) 931 9080 3000

Fax: +49 (0) 931 4523 2799 / E-Mail: info@arebos.de

Office address: Canbolat Vertriebs GmbH • Gneisenaustraße 10-11 • 97074 Würzburg

Return address can be found in the imprint: <https://www.arebos.de/impressum/>

Sales tax identification number: DE 263752326

Registration court in the commercial register is Würzburg, HRB 10082, WEEE-Reg. No. DE 61617071

EU Declaration of Conformity

We, the **Canbolat Vertriebsgesellschaft mbH**
Gneisenaustraße 10-11
97074 Würzburg
Germany

declare in sole responsibility that the following product:

Brand **AREBOS**

Product Office chair

Article 4252023127134

was developed, constructed EN16955:2017
and manufactured in accordance EN1335-1:2020+A1:2022
with EN1335-2:2018
with the requirements of the
European Directives:

The subject matter of the declaration described above corresponds to the respective European Union harmonisation legislation.

Place and date of issue: Würzburg, 12.02.2025

Signature:



Dipl.-Inform. (Univ.) Korhan Canbolat, Managing Director

If the device is modified without our consent, this declaration of conformity loses its validity.